

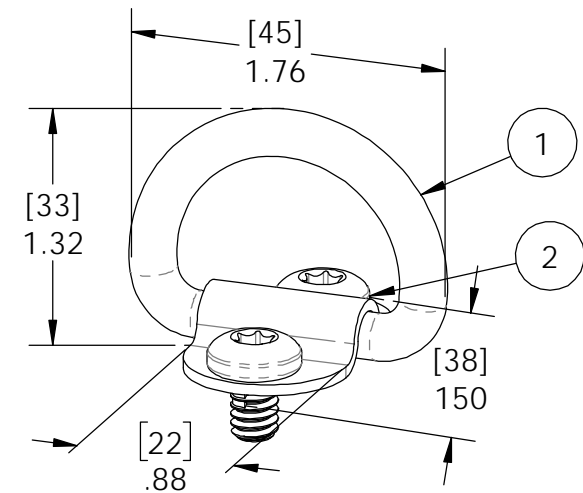
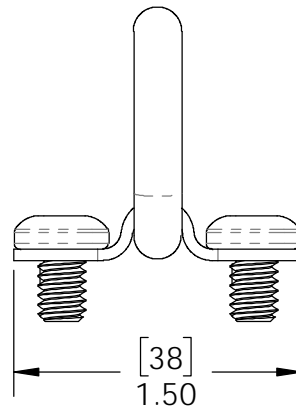
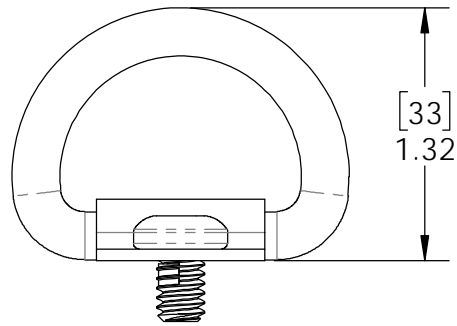
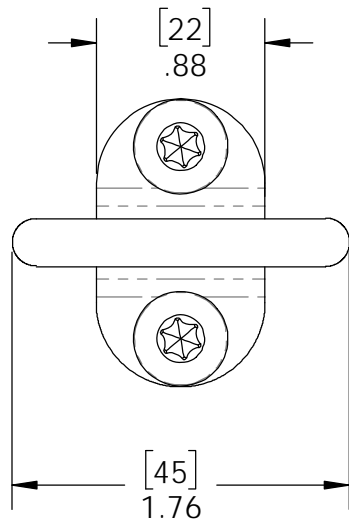


OZCO BUILDING PRODUCTS

Product & Packaging Specs

OWT Hardware Accessory - Shackle (HA-SHK)

Item #: 57706



| ITEM NO. | QTY. | PART NUMBER | DESCRIPTION |
|----------|------|-------------|--|
| 1 | 1 | 57706 | OWT Hardware Accessory - Shackle (OHA-SHK-Shackle) |
| 2 | 2 | Screw | Screw, .25-20 x .375 Torx Black with Locking Patch |

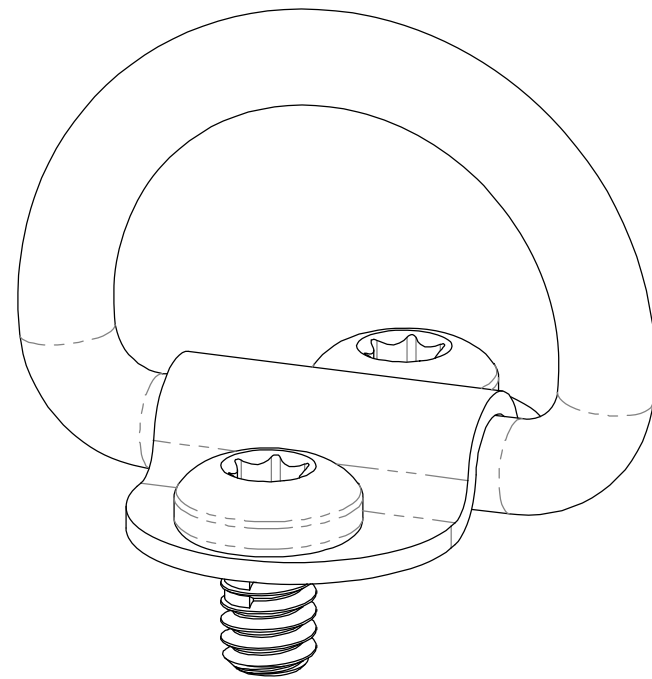
Weight: 0.10 LBS
 Scale: 1:1
 Last updated: 1/17/2018

57706

Product & Packaging Specs

OWT Hardware Accessory - Shackle (HA-SHK)

Item #: 57706



Weight: 0.10 LBS
Scale: 2:1
Last updated: 1/17/2018

57706

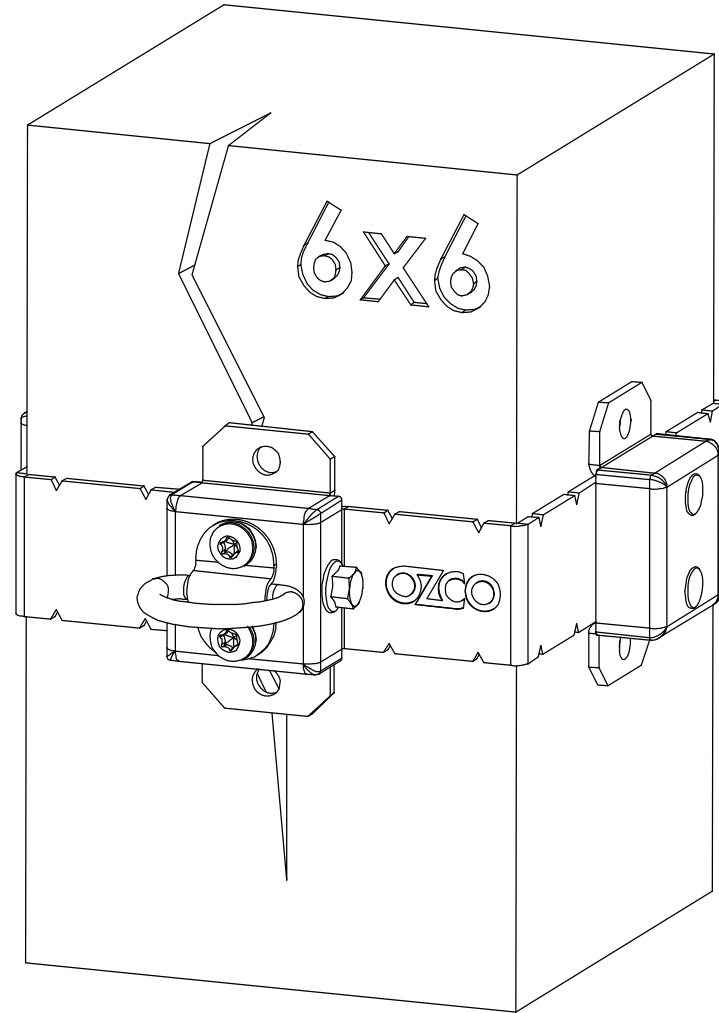
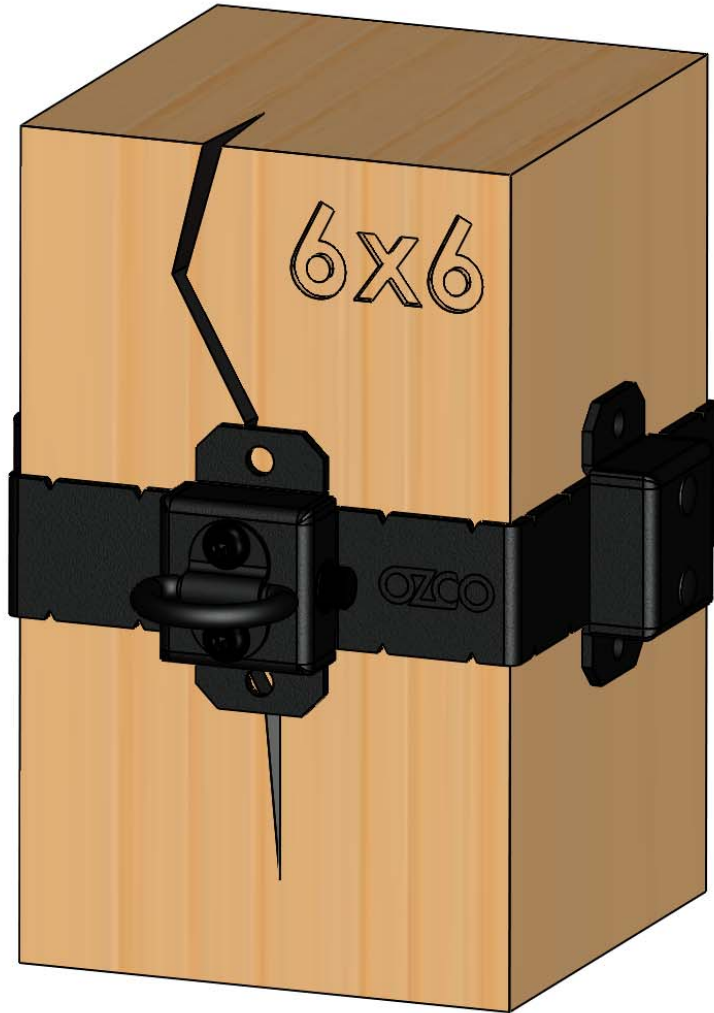


OZCO BUILDING PRODUCTS

Product & Packaging Specs

OWT Hardware Accessory - Shackle (HA-SHK)

Item #: 57706



Weight: 0.10 LBS
Scale: 1:2
Last updated: 1/17/2018

shown installed on [6x6 Post Band \(51786\)](#); 4x4 & 8x8 Post Bands available

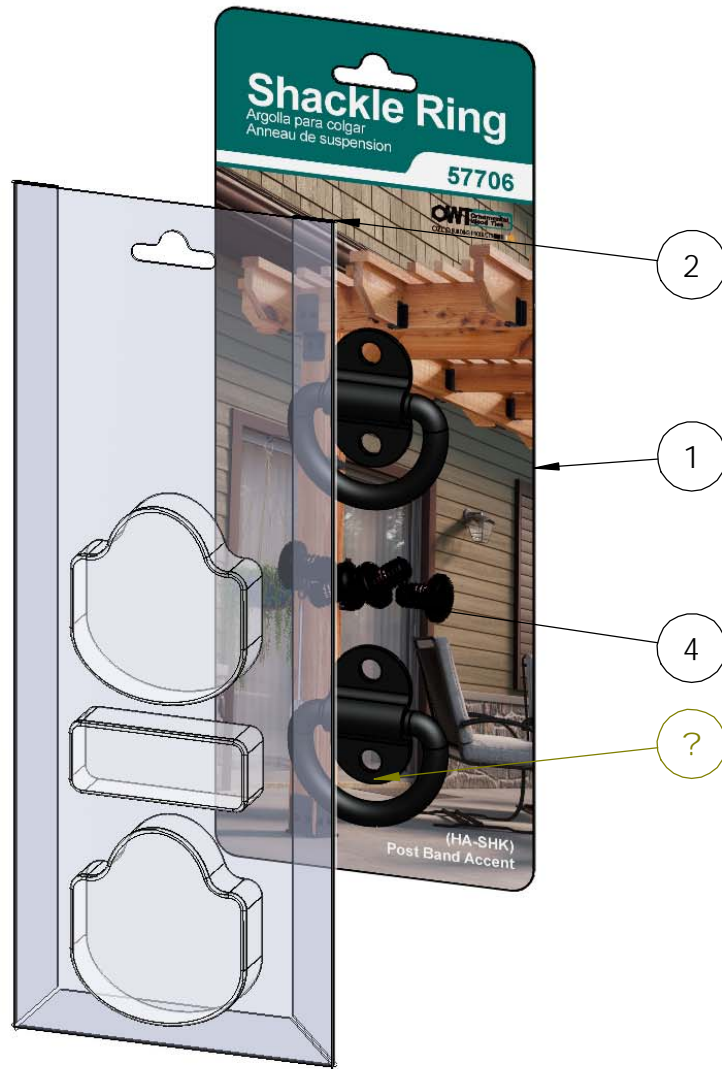
57706

V2.00 - Installation Instructions, Specifications and Project Plans are effective 1/17/2018 . This information is updated periodically 3 and should not be relied upon after 2 years from 1/17/2018 . Please visit [OZCOBP.com](#) to get current information.

Product & Packaging Specs

57706 Packing

Item #: Box packing



| ITEM NO. | Box packing/ QTY. | PART NUMBER | DESCRIPTION |
|----------|-------------------|-------------|--|
| 1 | 1 | Box, 57706 | Box, 57706 |
| 2 | 1 | Box, 57706 | Box, 57706 |
| 3 | 2 | 57706 | OWT Hardware Accessory - Shackle |
| 4 | 4 | Screw | Screw, .25-20 x .375 Torx Black with Locking Patch |

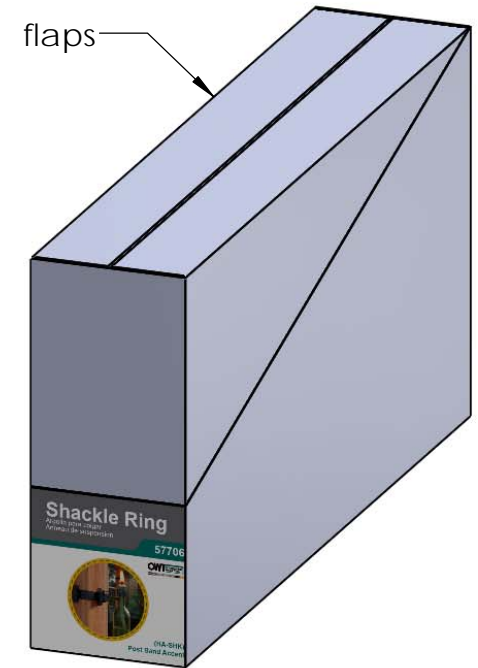
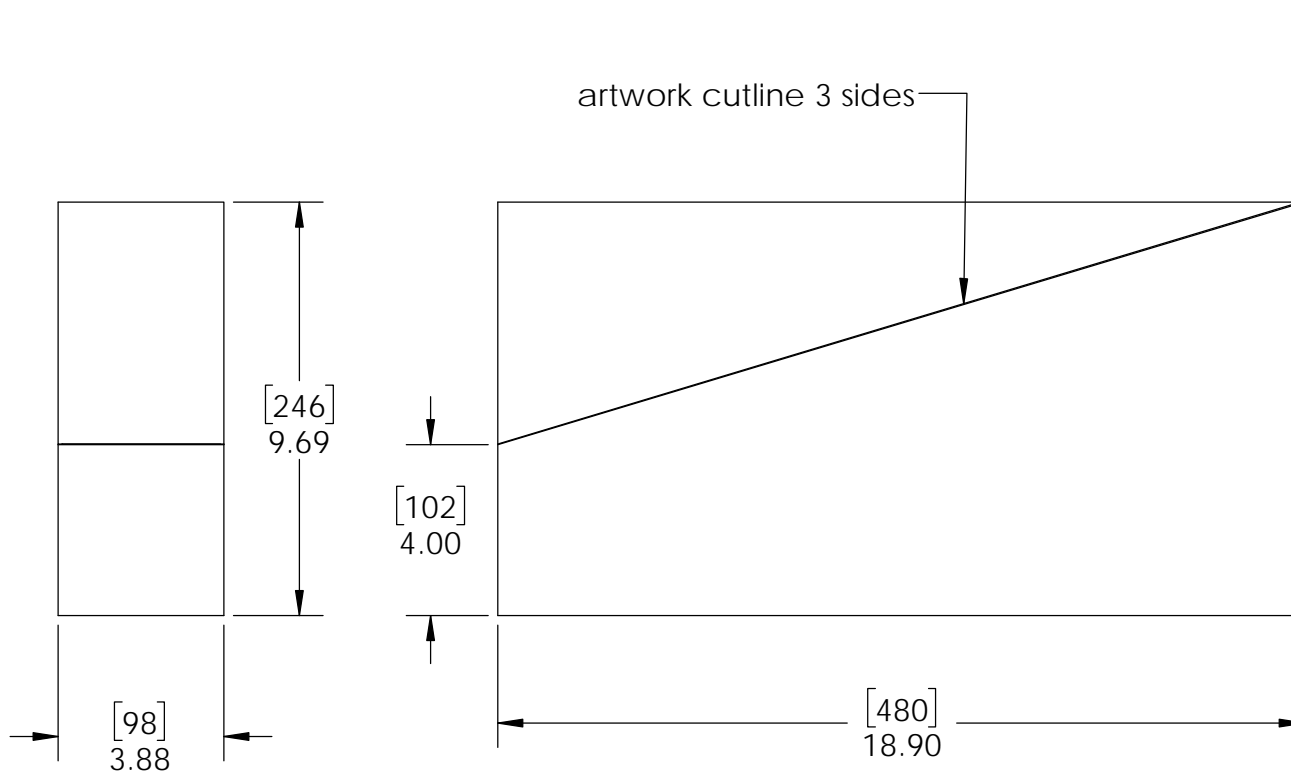
Weight: .3 LBS
 Scale: 1:2
 Last updated: 1/17/2018

57706

Product & Packaging Specs

Case, 57706

Item #: Case

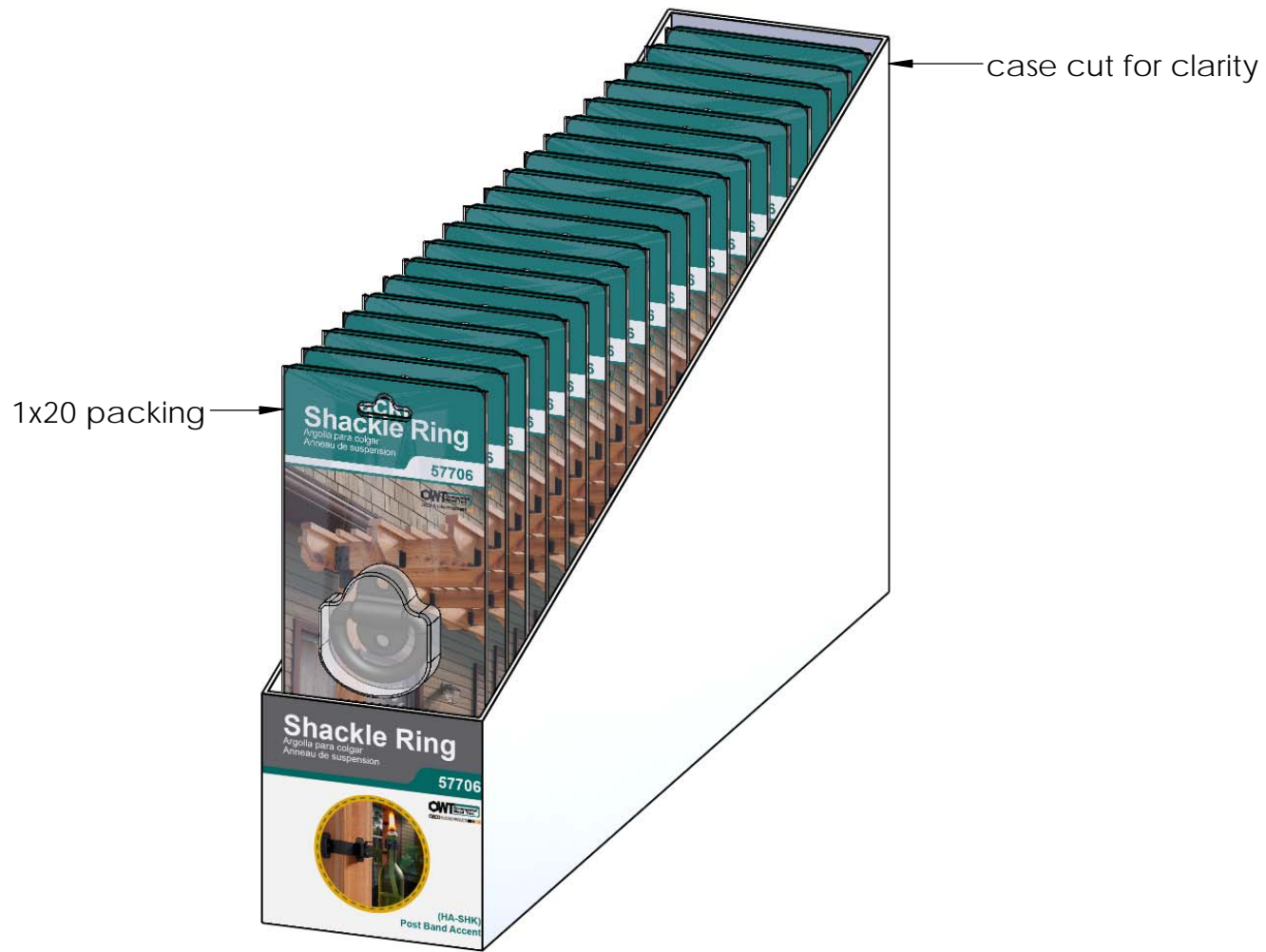


Material: Corrugated Paper
 Finish: See Artwork
 Weight: 0.26 LBS
 Scale: 1:4.5
 Last updated: 1/17/2018

57706

Product & Packaging Specs

57706 Packing
Item #: Case packing



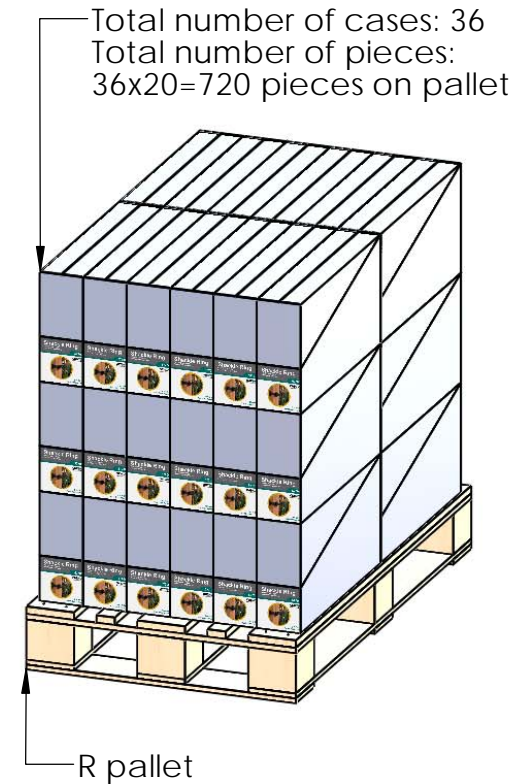
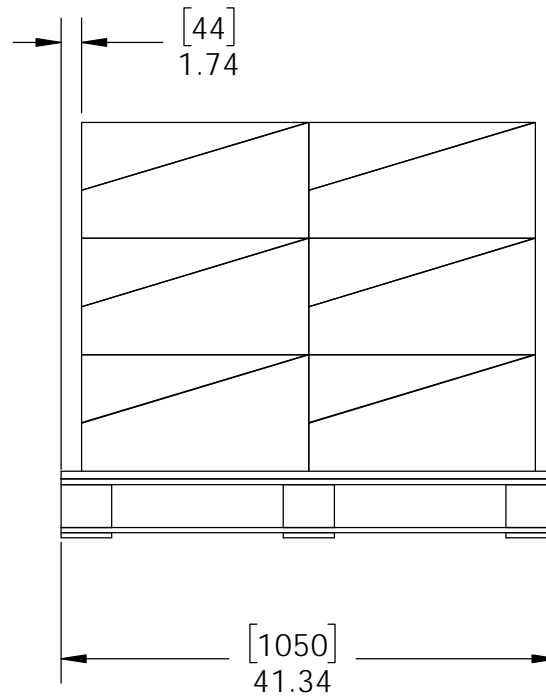
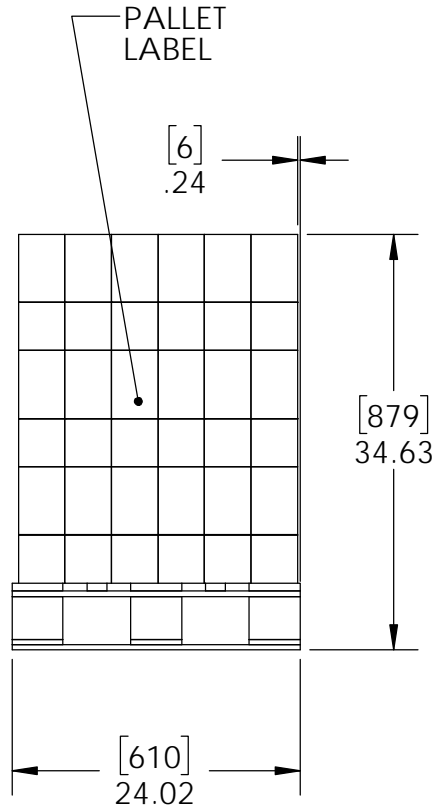
Weight: 12 LBS
Scale: 1:3
Last updated: 1/17/2018

57706

Product & Packaging Specs

57706 Packing

Item #: Pallet packing



Weight: 462 LBS
 Scale: 1:16
 Last updated: 1/17/2018

additional pallet packing instructions

- plywood on top layer
- strap to pallet
- clear wrap around boxes

