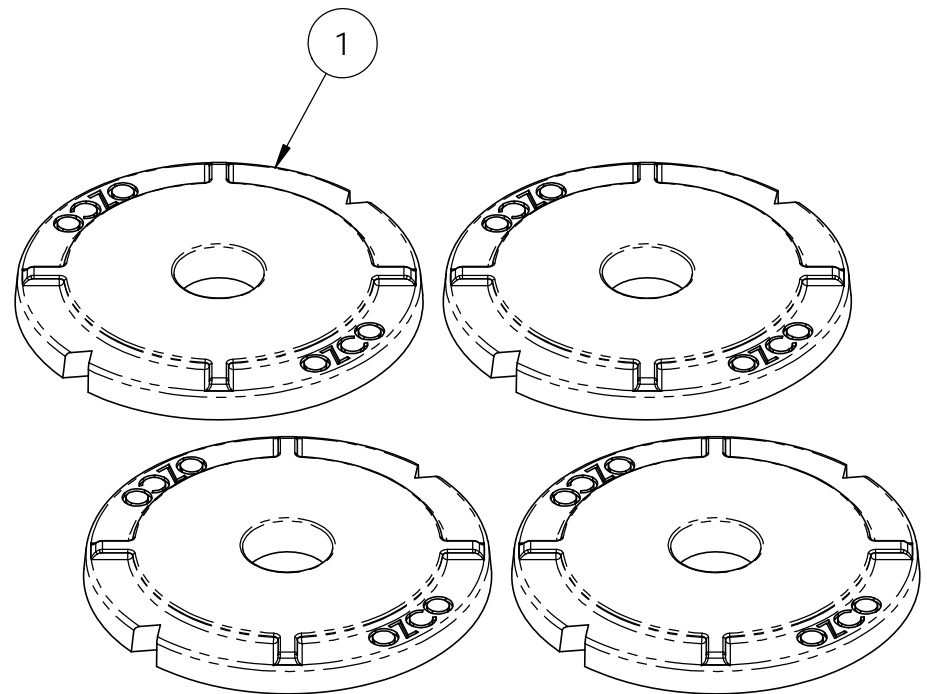
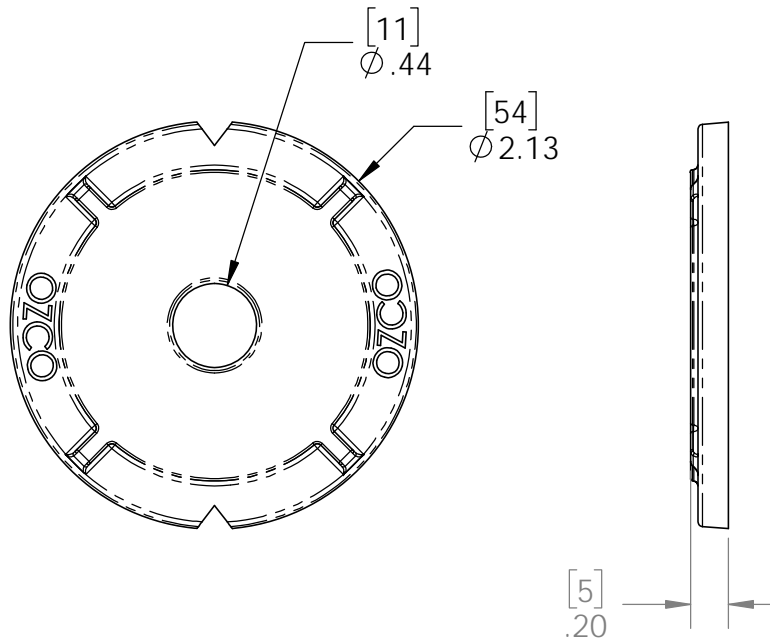


Product & Packaging Specs

2" Timber Bolt Heavy Duty Washer (OWT-TBW-2)

Item #: 56680

ITEM NO.	QTY.	PART NUMBER	DESCRIPTION
1	4	56680	2" Timber Bolt Heavy Duty Washer (OWT-TBW-2)



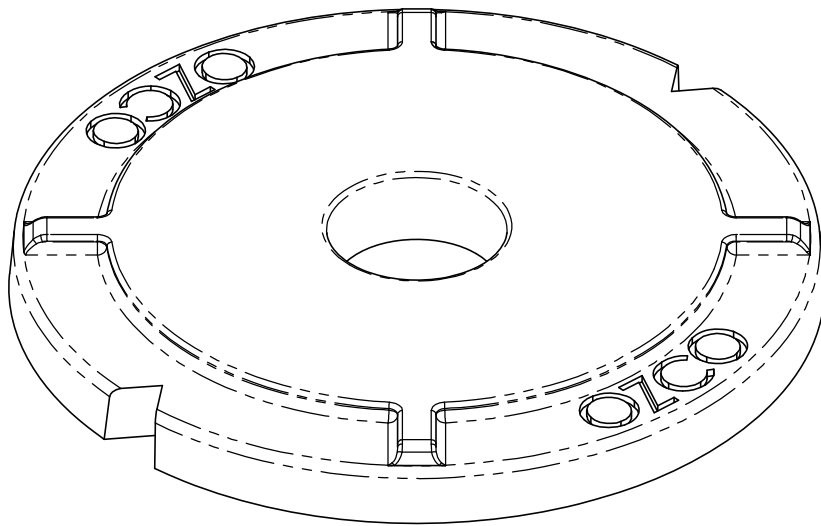
Weight: 0.17 LBS
Scale: 1:1
Last updated: 10/10/2016

56680

Product & Packaging Specs

2" Timber Bolt Heavy Duty Washer (OWT-TBW-2)

Item #: 56680



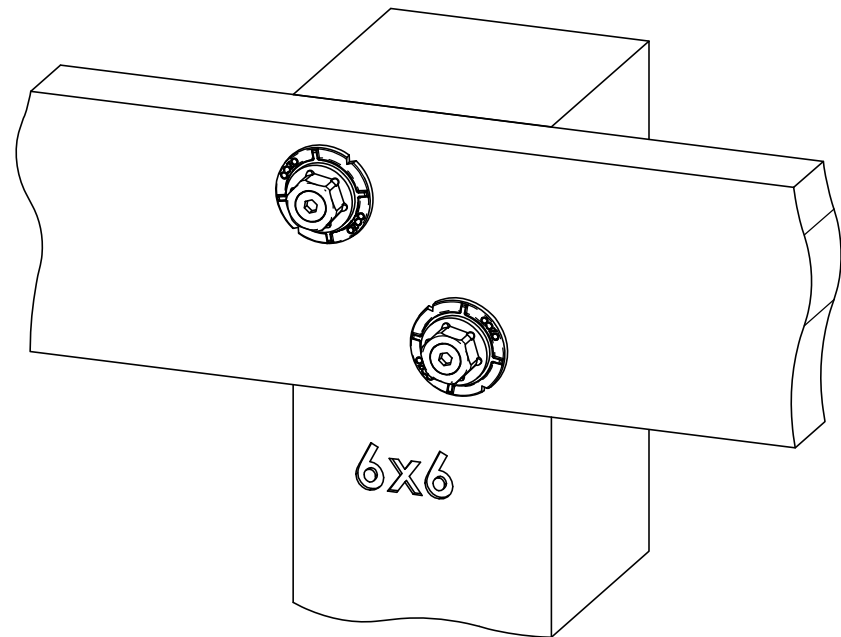
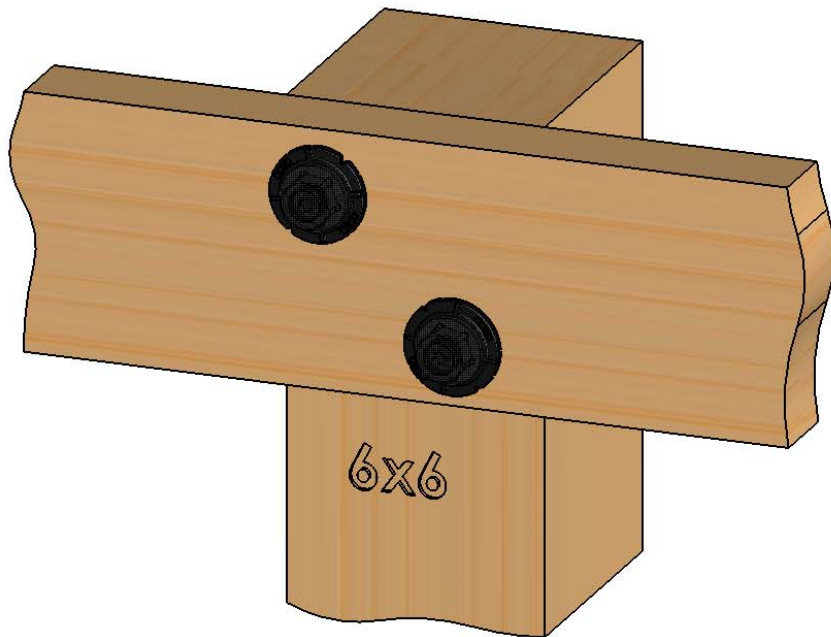
Weight: 0.17 LBS
Scale: 2:1
Last updated: 10/10/2016

56680

Product & Packaging Specs

2" Timber Bolt Heavy Duty Washer (OWT-TBW-2)

Item #: Typical Installation & Basic Assembly



HEX CAPS, TIMBER BOLTS &/OR SCREWS - SOLD SEPARATELY

Weight: 21.08 LBS
Scale: 1:4
Last updated: 10/10/2016

shown with OWT Timberbolt (sold separately)

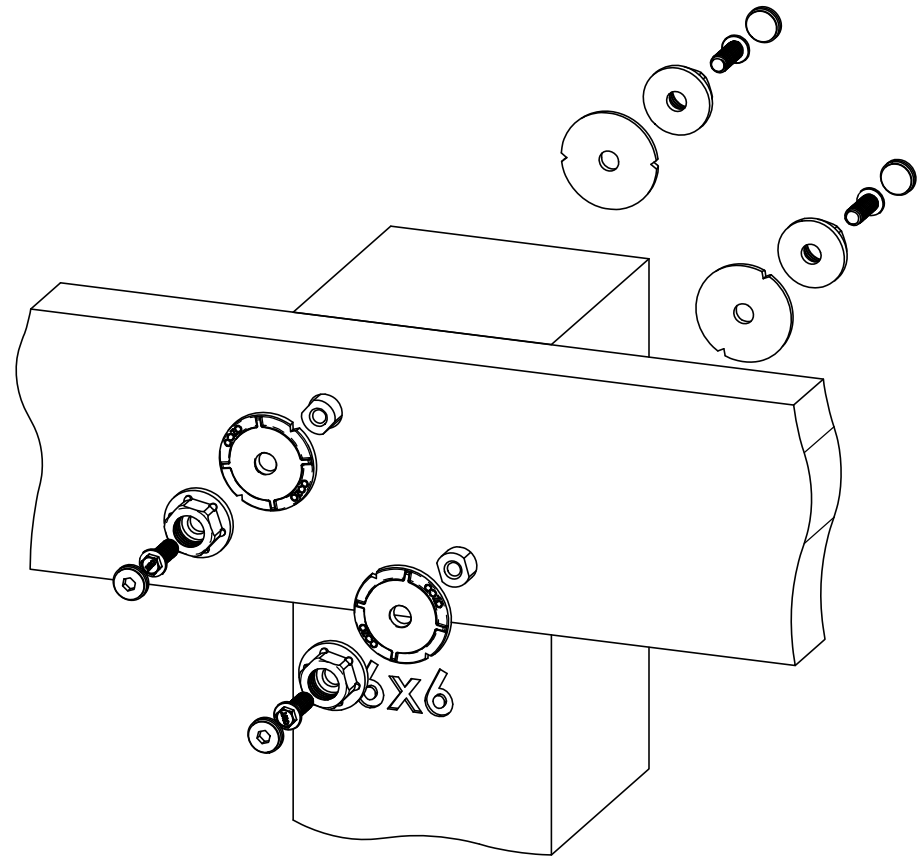
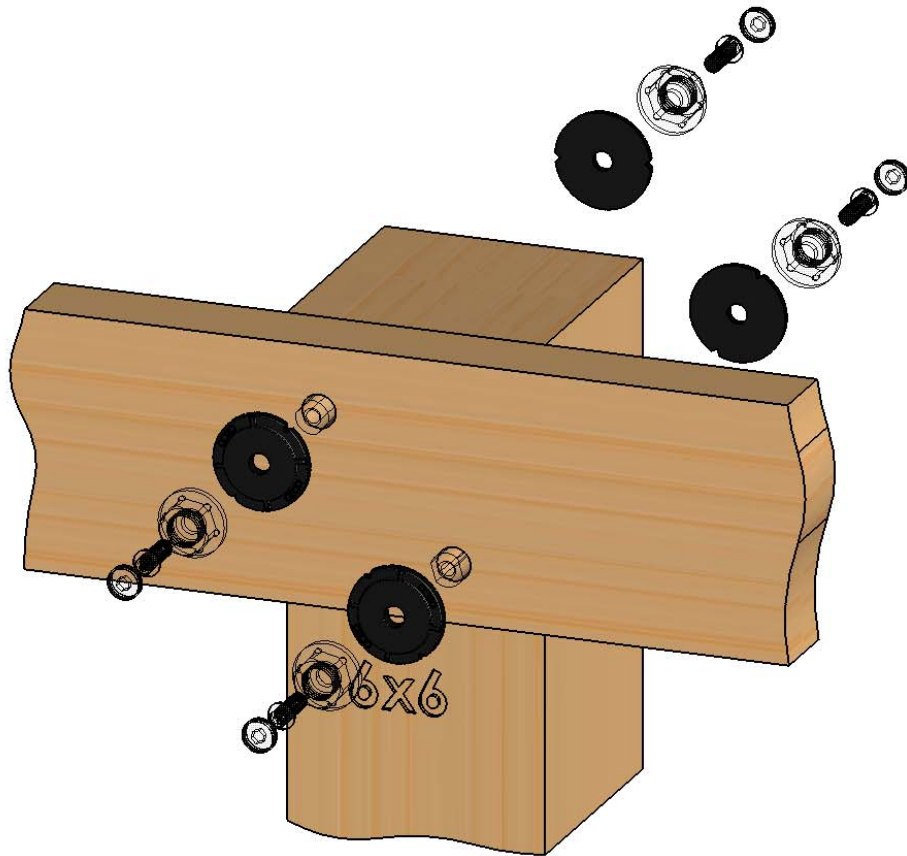
56680

V2.00 - Installation Instructions, Specifications and Project Plans are effective 10/10/2016. This information is updated periodically and should not be relied upon after 2 years from 10/10/2016. Please visit OZCOBP.com to get current information.

Product & Packaging Specs

2" Timber Bolt Heavy Duty Washer (OWT-TBW-2)

Item #: Typical Installation & Basic Assembly



HEX CAPS, TIMBER BOLTS &/OR SCREWS - SOLD SEPARATELY

Weight: 21.08 LBS
Scale: 1:4
Last updated: 10/10/2016

shown with OWT Timberbolt (sold separately)

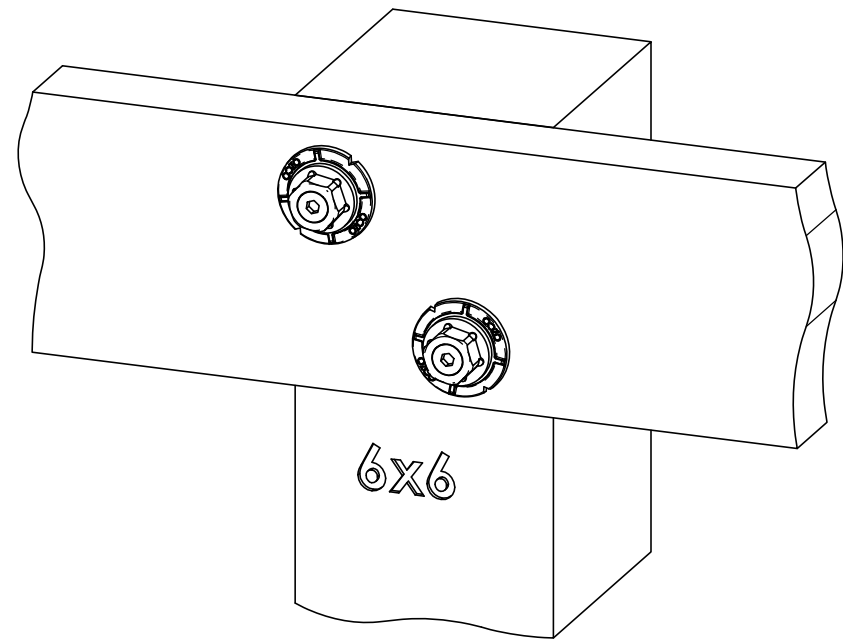
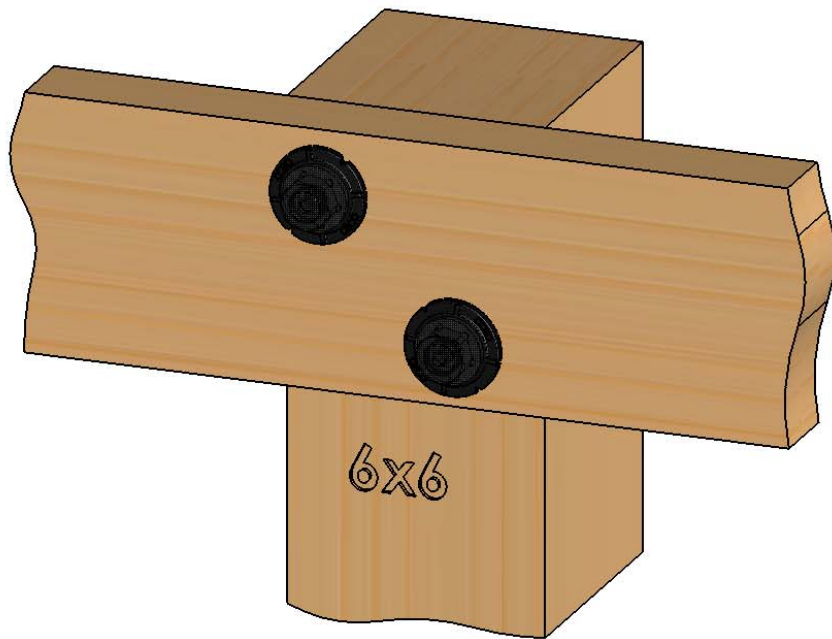
56680

V2.00 - Installation Instructions, Specifications and Project Plans are effective 10/10/2016. This information is updated periodically and should not be relied upon after 2 years from 10/10/2016. Please visit OZCOBP.com to get current information.

Product & Packaging Specs

2" Timber Bolt Heavy Duty Washer (OWT-TBW-2)

Item #: Typical Installation & Basic Assembly



HEX CAPS, TIMBER BOLTS &/OR SCREWS - SOLD SEPARATELY

Weight: 21.08 LBS
Scale: 1:4
Last updated: 10/10/2016

shown with OWT Timberbolt (sold separately)

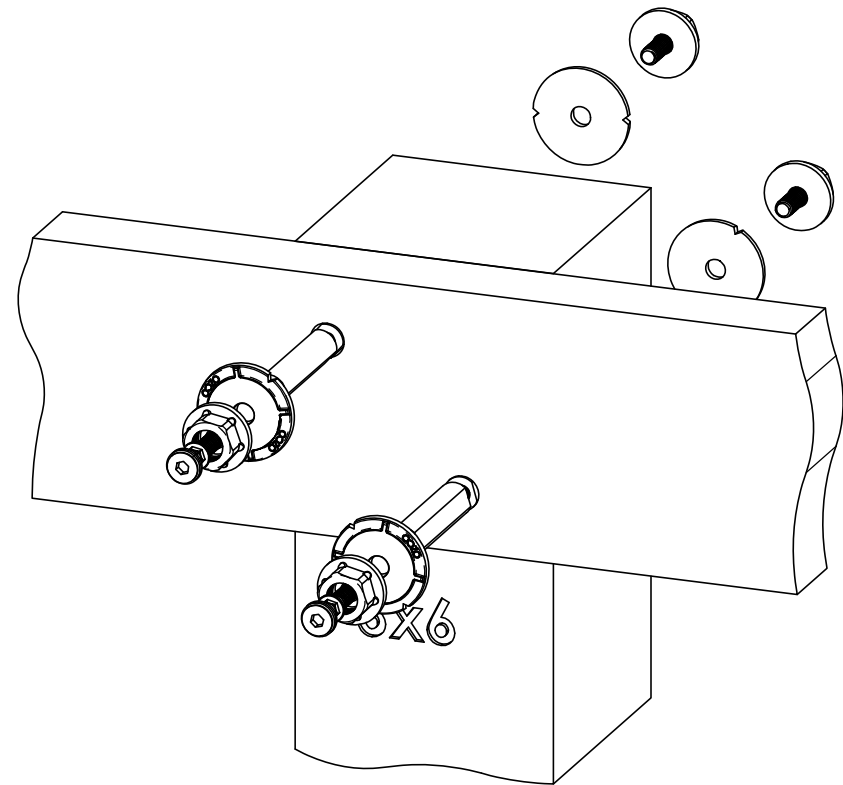
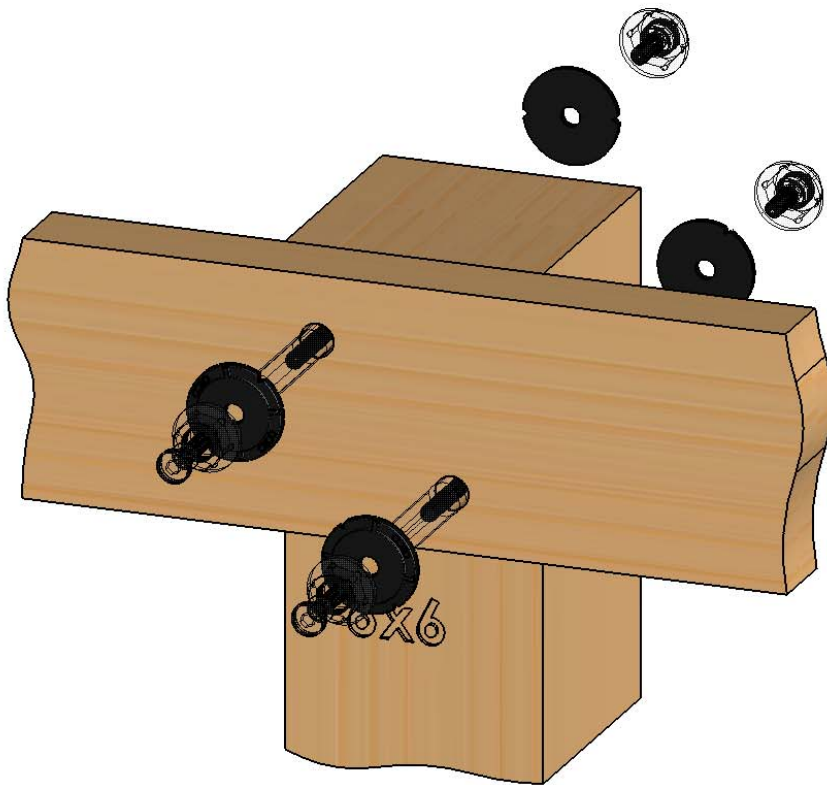
56680

V2.00 - Installation Instructions, Specifications and Project Plans are effective 10/10/2016. This information is updated periodically and should not be relied upon after 2 years from 10/10/2016. Please visit OZCOBP.com to get current information.

Product & Packaging Specs

2" Timber Bolt Heavy Duty Washer (OWT-TBW-2)

Item #: Typical Installation & Basic Assembly



HEX CAPS, TIMBER BOLTS &/OR SCREWS - SOLD SEPARATELY

Weight: 21.08 LBS
Scale: 1:4
Last updated: 10/10/2016

shown with OWT Timberbolt (sold separately)

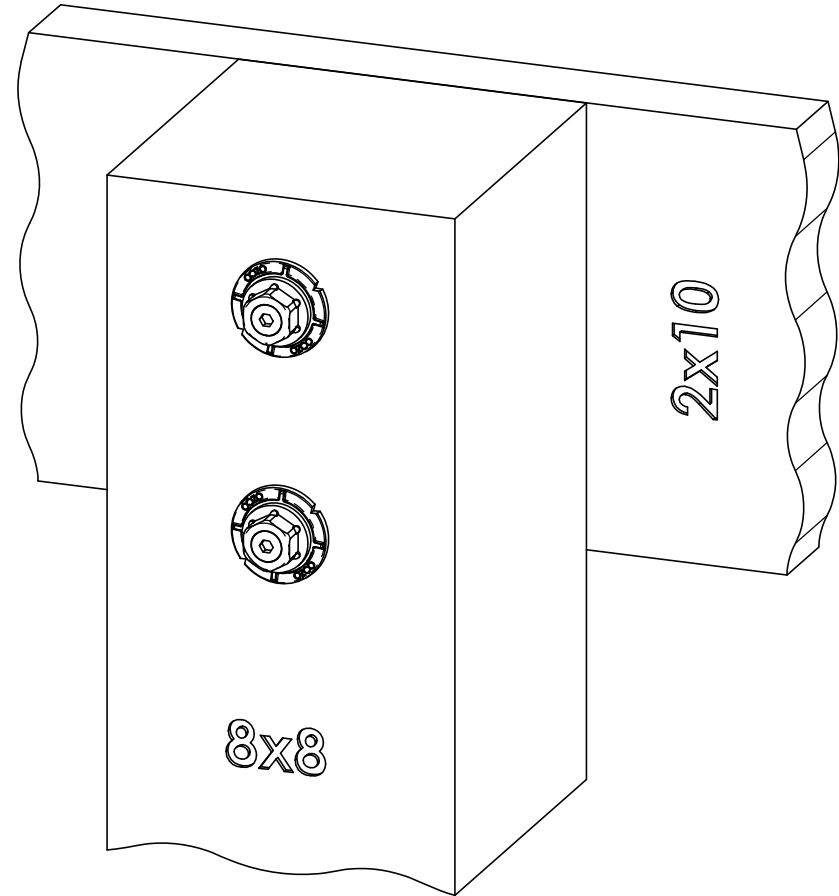
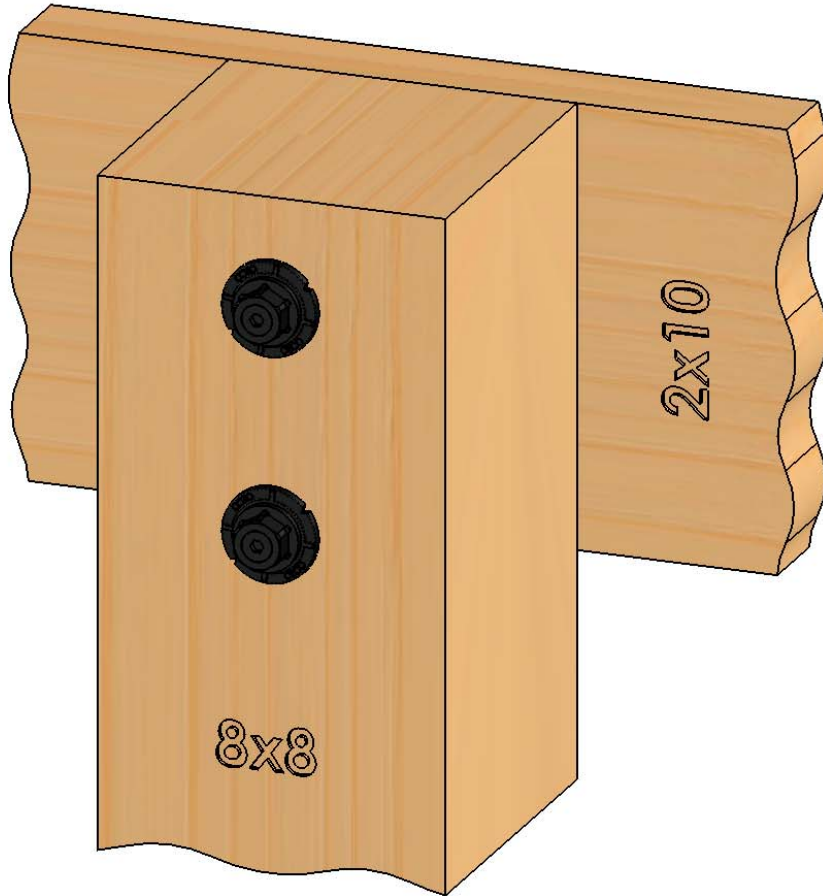
56680

V2.00 - Installation Instructions, Specifications and Project Plans are effective 10/10/2016. This information is updated periodically and should not be relied upon after 2 years from 10/10/2016. Please visit OZCOBP.com to get current information.

Product & Packaging Specs

2" Timber Bolt Heavy Duty Washer (OWT-TBW-2)

Item #: Typical Installation & Basic Assembly



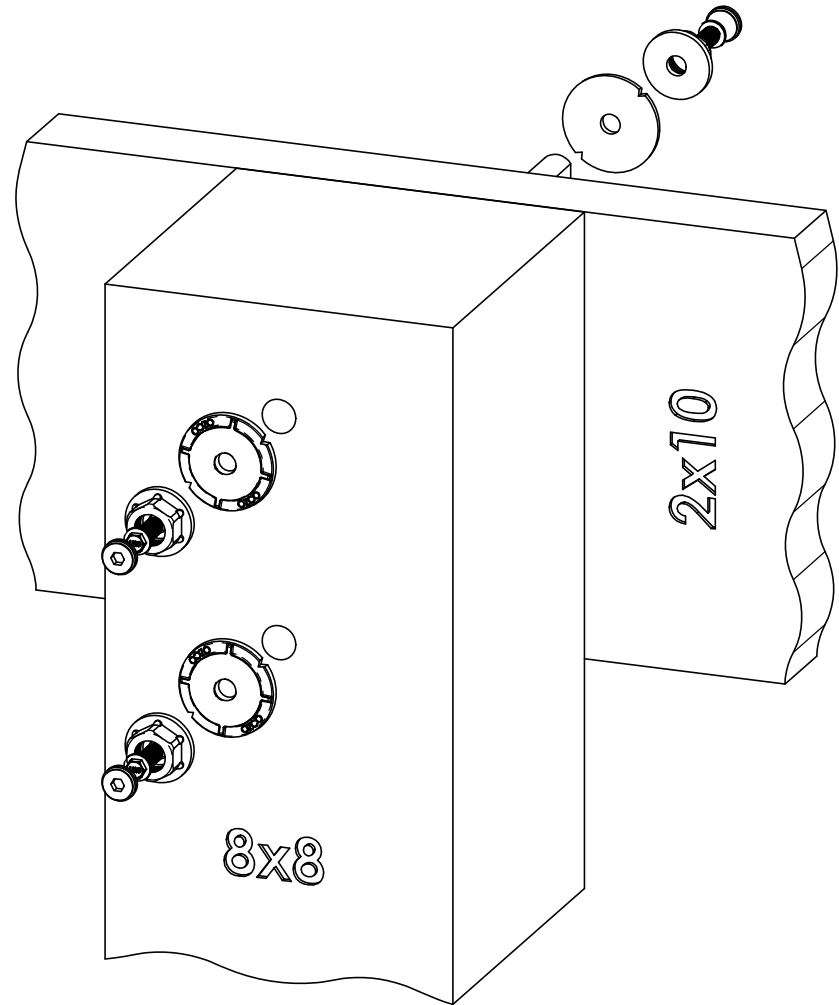
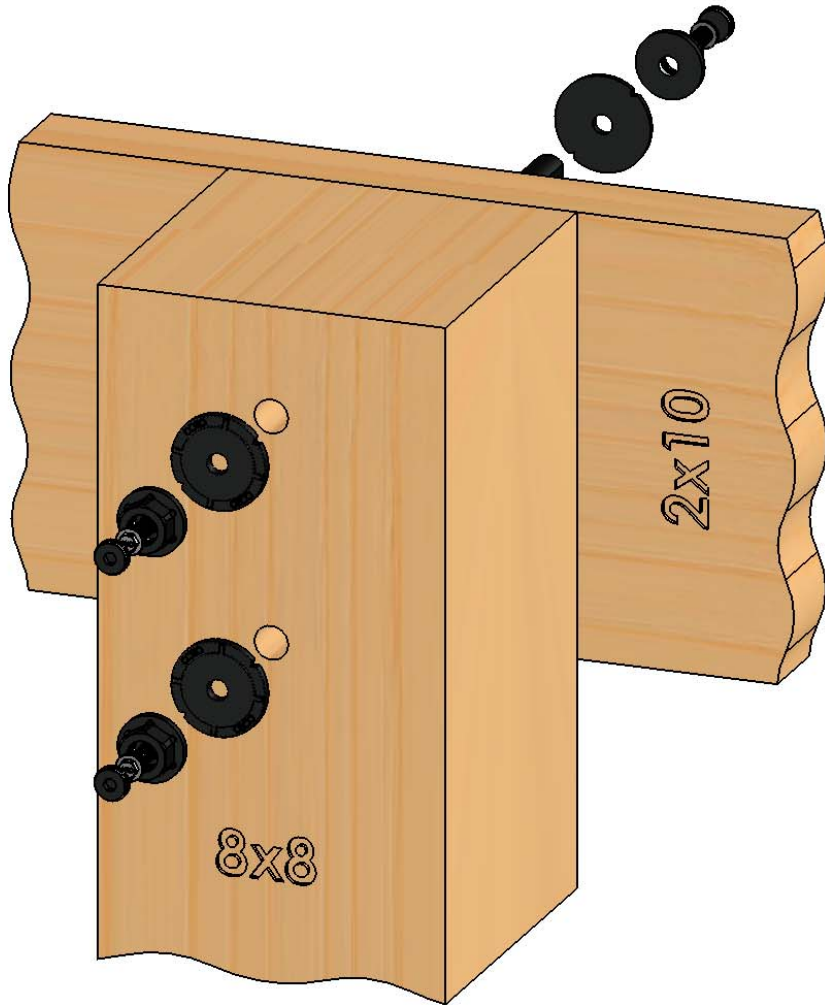
Weight: 44.99 LBS
Scale: 1:4
Last updated: 10/10/2016

HEX CAPS, TIMBER BOLTS &/OR SCREWS - SOLD SEPARATELY

Product & Packaging Specs

2" Timber Bolt Heavy Duty Washer (OWT-TBW-2)

Item #: Typical Installation & Basic Assembly

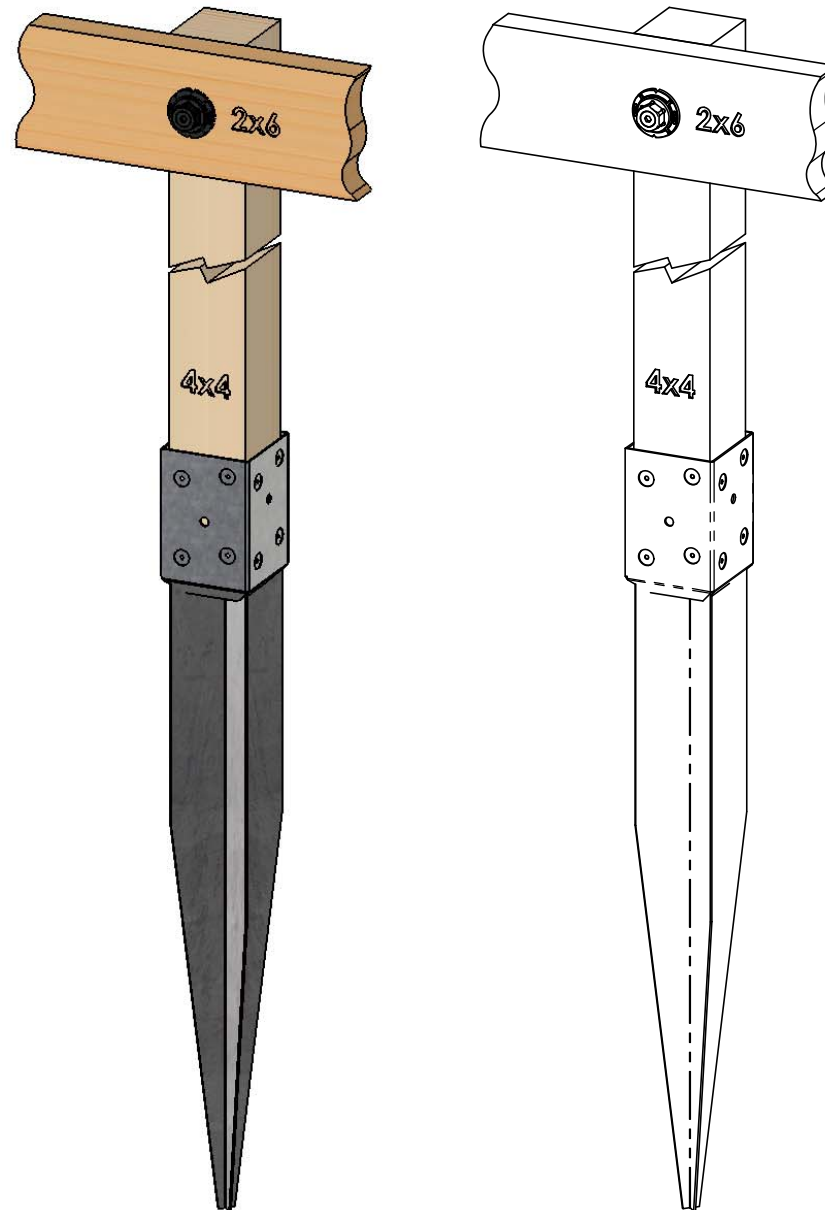


Weight: 44.99 LBS
Scale: 1:4
Last updated: 10/10/2016

HEX CAPS, TIMBER BOLTS &/OR SCREWS - SOLD SEPARATELY

Product & Packaging Specs

T4-850, 34", 4X4
Item #: 30160



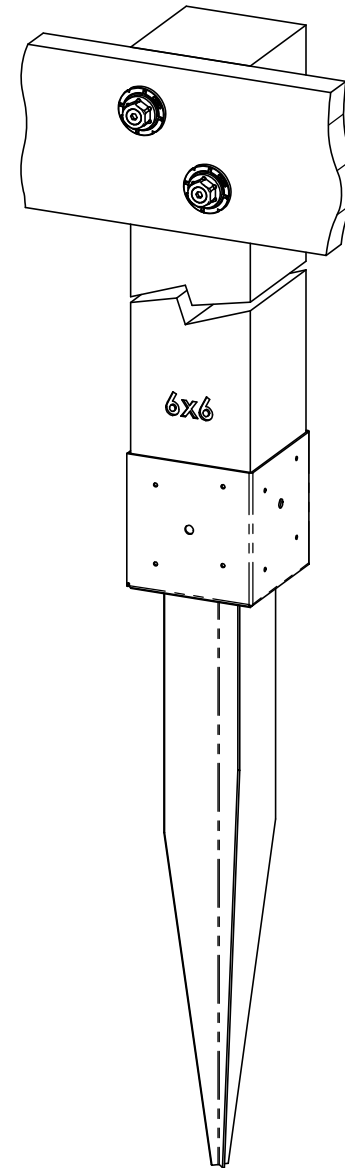
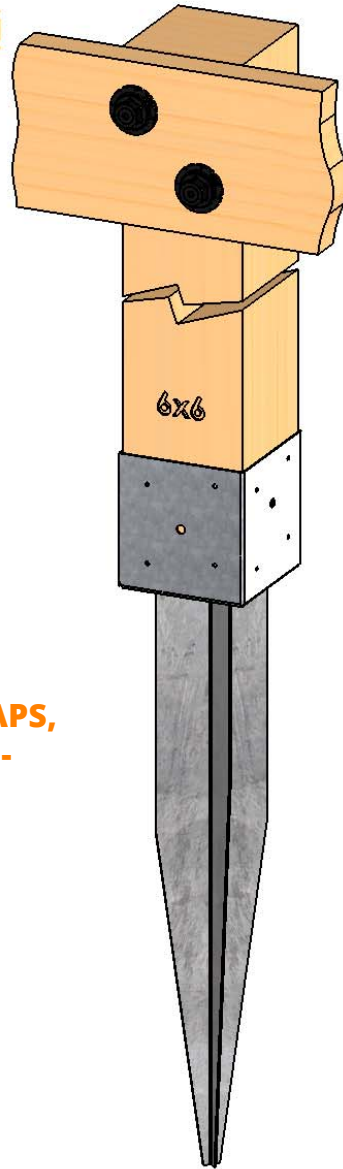
**T4-850 POST ANCHOR, HEX CAPS,
TIMBER BOLTS &/OR SCREWS -
ALL SOLD SEPARATELY**

Weight: 22.81 LBS
Scale: 1:8
Last updated: 10/10/2016

56680

Product & Packaging Specs

T6-700, 32", 6x6
Item #: 30410



**T6-700 POST ANCHOR, HEX CAPS,
TIMBER BOLTS &/OR SCREWS -
ALL SOLD SEPARATELY**

Weight: 40.58 LBS
Scale: 1:8
Last updated: 10/10/2016

shown with OWT Timberbolt & T6-700 (sold separately)

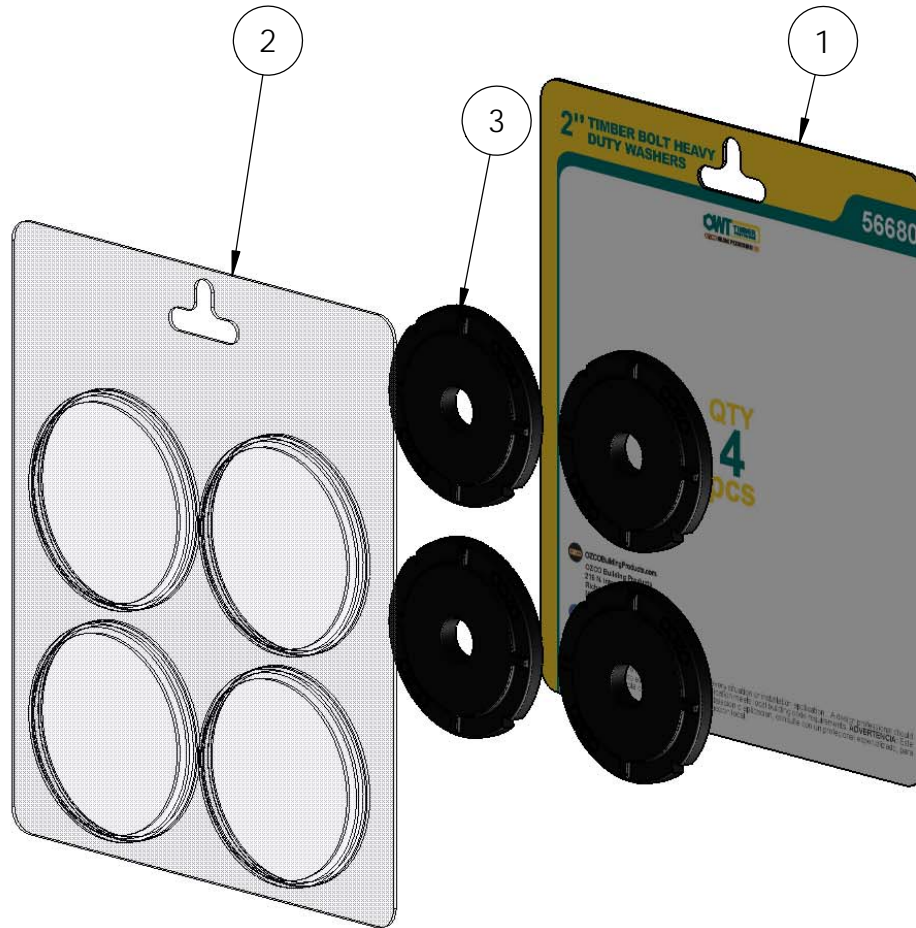
56680

V2.00 - Installation Instructions, Specifications and Project Plans are effective 10/10/2016. This information is updated periodically and should not be relied upon after 2 years from 10/10/2016. Please visit OZCOBP.com to get current information.

Product & Packaging Specs

56680 Packing

Item #: Blister packing



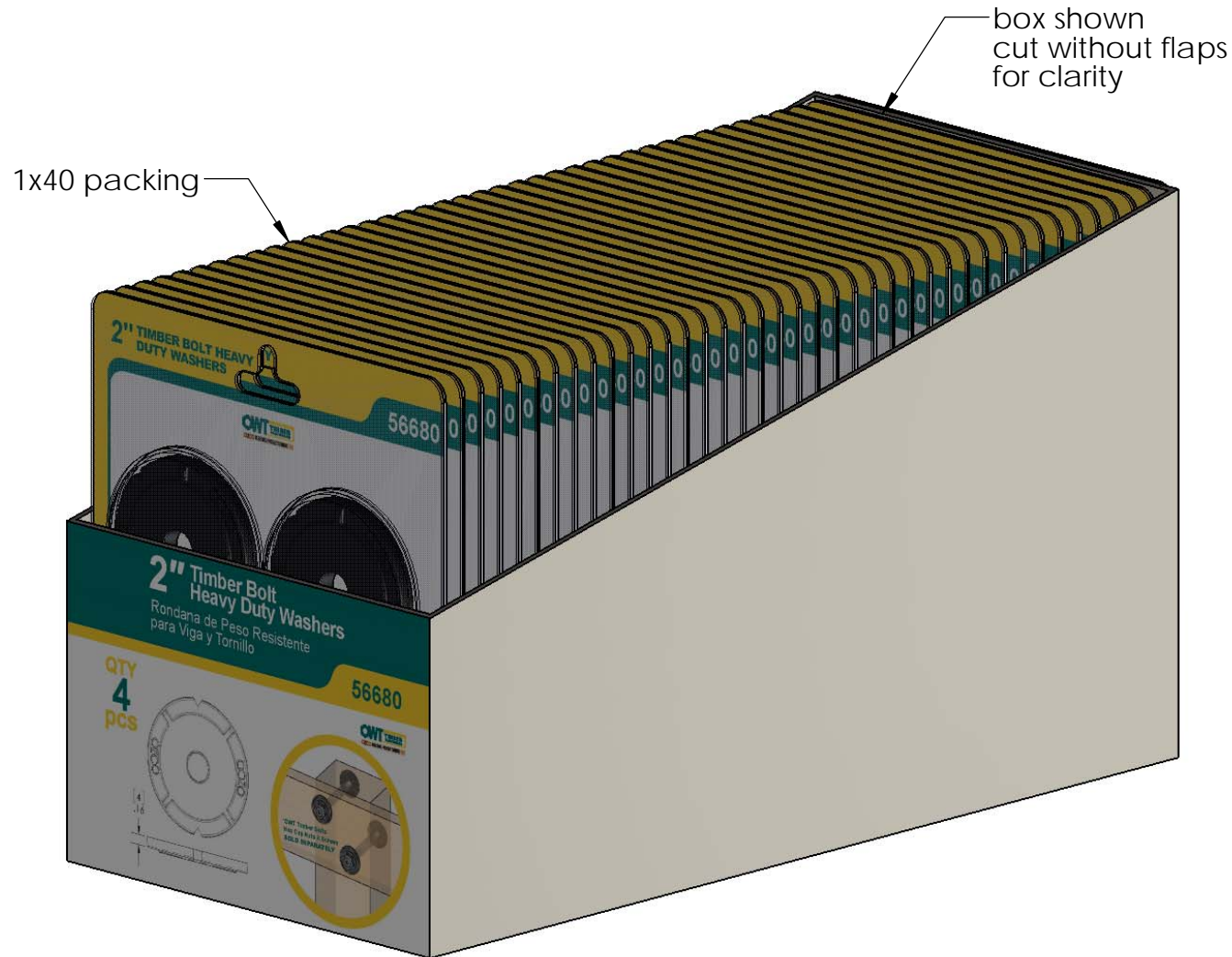
ITEM NO.	QTY.	PART NUMBER	DESCRIPTION
1	1	Box, 56680	Blister pack, 56680
2	1	Box, 56680	Backing, Blister pack 56680
3	1	56680	2" Timber Bolt Heavy Duty Washer (OWT-TBW-2)

Weight: 0.77 LBS
Scale: 1:2
Last updated: 10/10/2016

56680

Product & Packaging Specs

56680 Packing
Item #: Case packing



Weight: 40 LBS
Scale: 1:2
Last updated: 10/10/2016

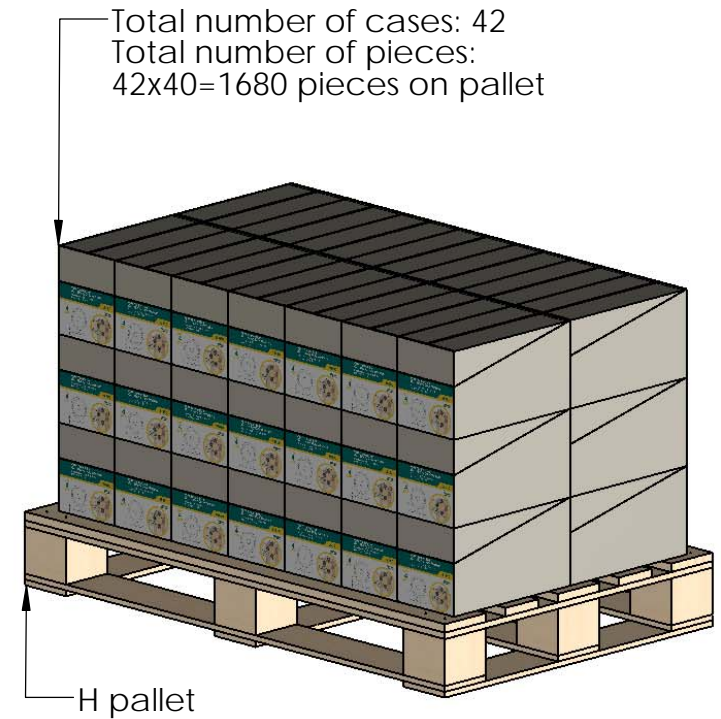
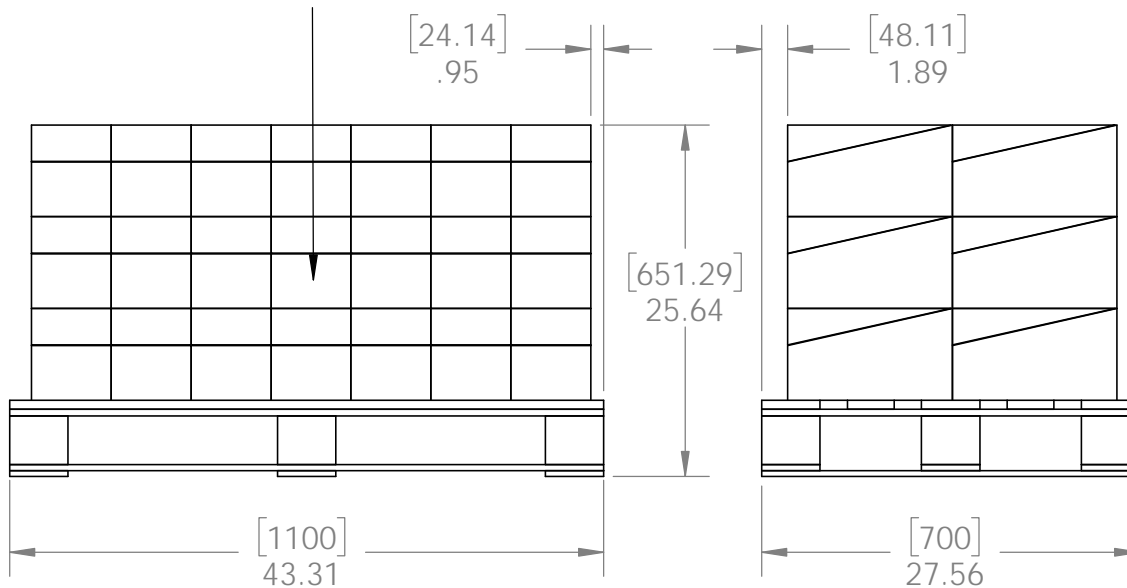
56680

Product & Packaging Specs

56680 Packing

Item #: Pallet packing

Item #: **56680** | **OWT-TBW-2**
2" HEAVY DUTY WASHER
PALLET | **1680 pcs**
SKU#: 56880 
Weight: 628 lbs
 LOT# _____ Priority# _____ 



Total number of cases: 42
 Total number of pieces:
 $42 \times 40 = 1680$ pieces on pallet



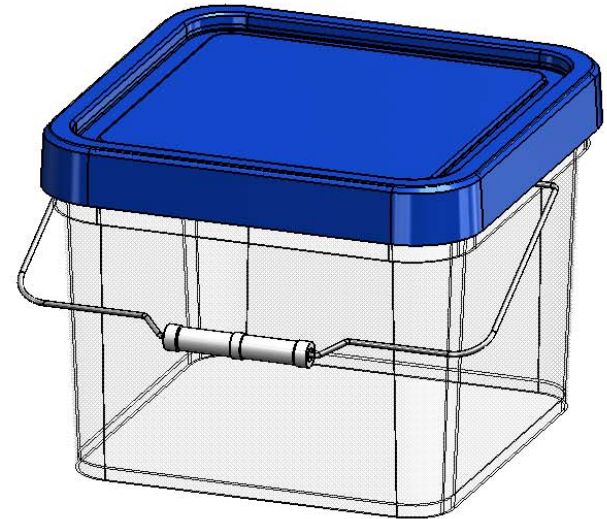
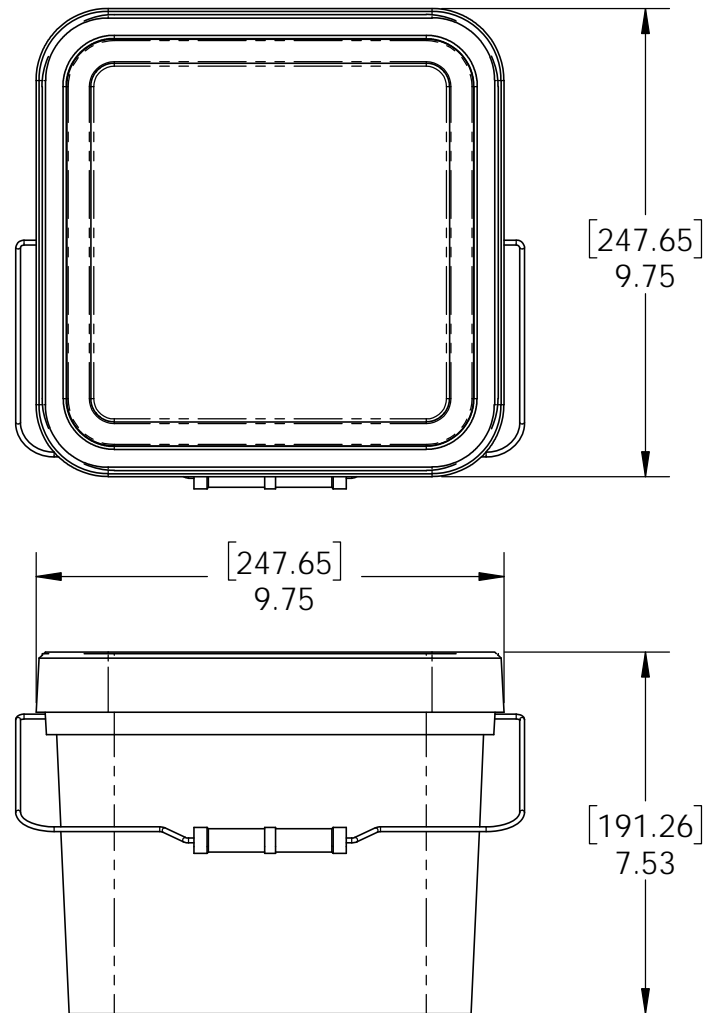
additional pallet packing instructions
 plywood on top layer
 strap to pallet
 clear wrap around boxes

Weight: 628 LBS
 Scale: 1:14
 Last updated: 10/10/2016

56680

Product & Packaging Specs

Bulk Pack, 56680
Item #: Pail



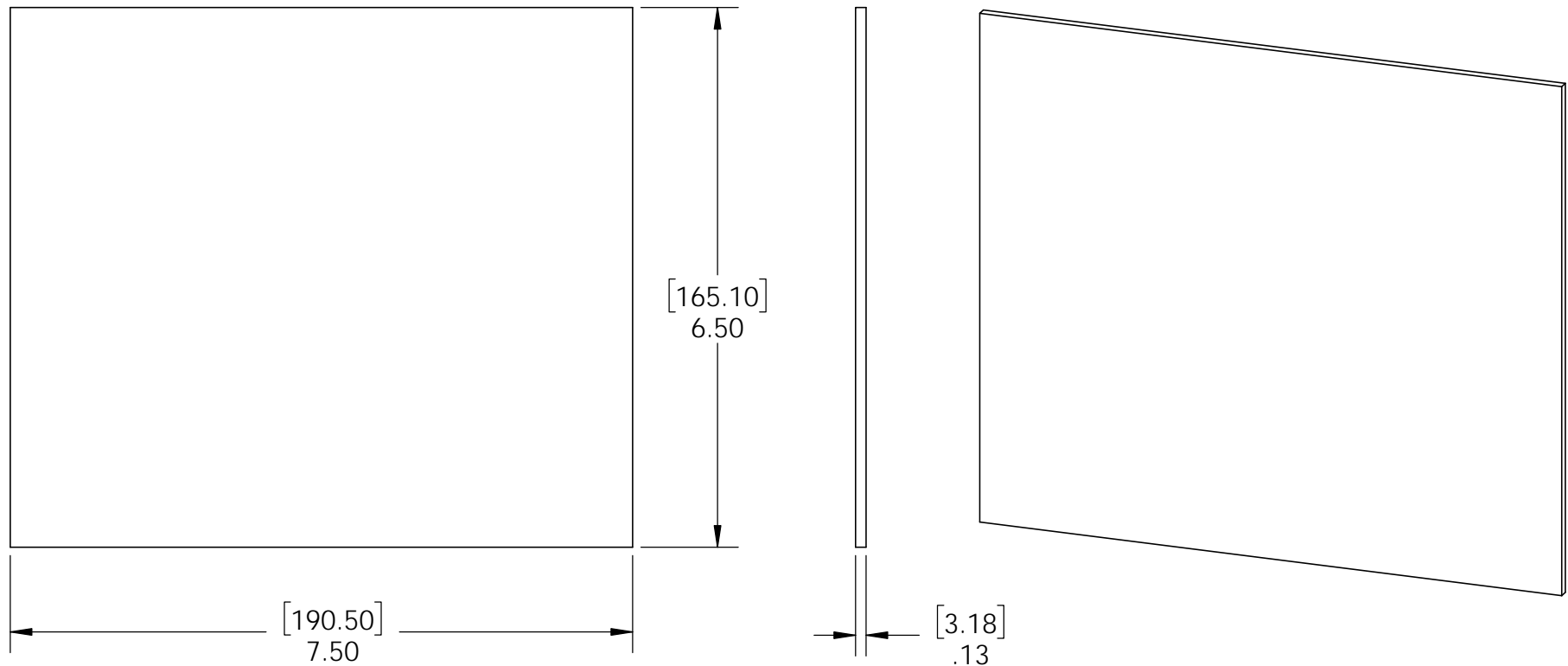
Weight: 0.78 LBS
Scale: 1:1
Last updated: 10/10/2016

56680

Product & Packaging Specs

Divider, Bulk Pack 56680

Item #: Divider, Bulk Pack Container



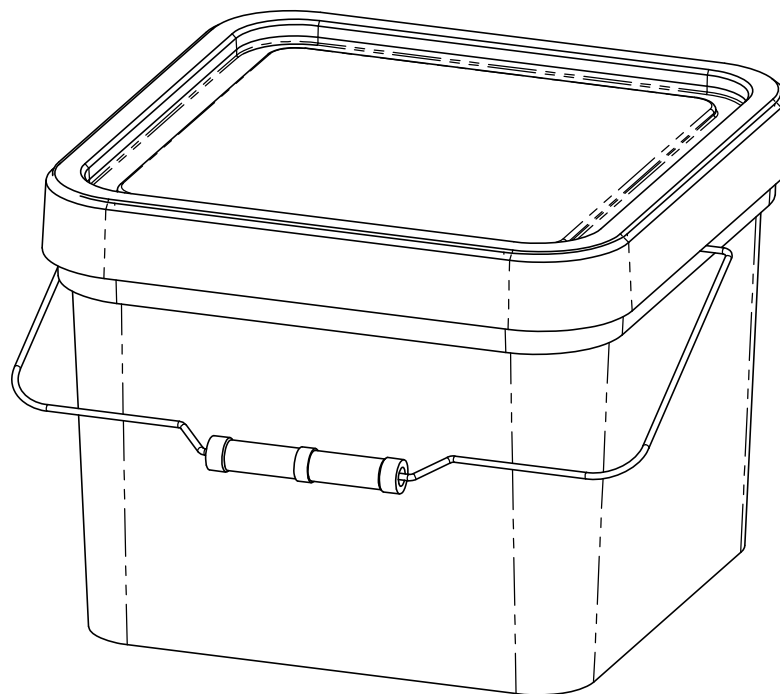
Material: Corrugated Paper
Finish: Natural
Weight: 0.03 LBS
Scale: 1:2
Last updated: 10/10/2016

56680

Product & Packaging Specs

Bulk Pack, 56680

Item #: Pail Packing



Weight: 26.82 LBS
Scale: 1:1
Last updated: 10/10/2016

56680

Product & Packaging Specs

Bulk Pack, 56680

Item #: Pail Packing



ITEM NO.	QTY.	PART NUMBER	DESCRIPTION
1	1	Plastic Bin, Blue Lid	
2	150	56680	2" Timber Bolt Heavy Duty Washer (OWT-TBW-2)
3	16	Divider, Bulk Pack 56680	Divider, Bulk Pack 56680

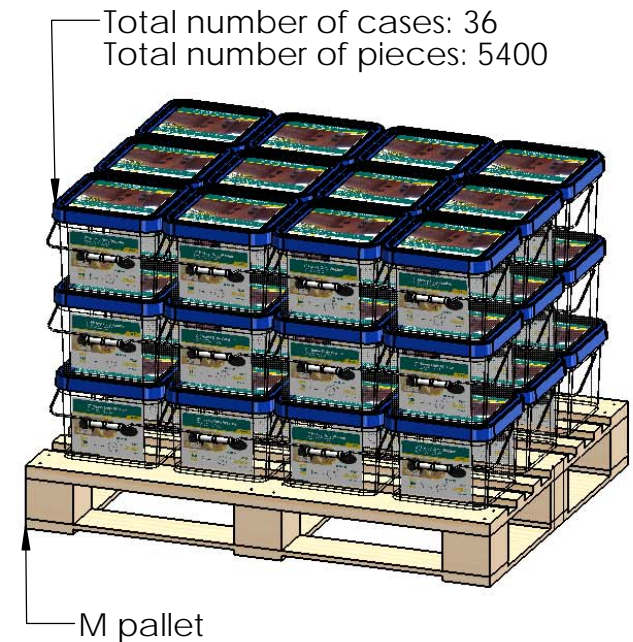
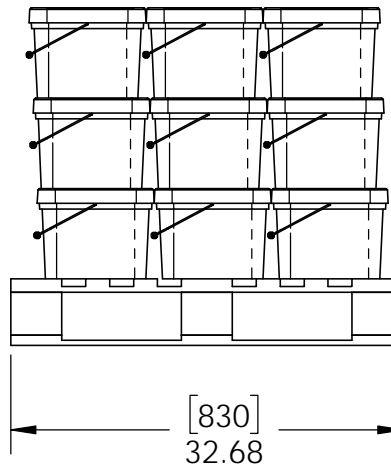
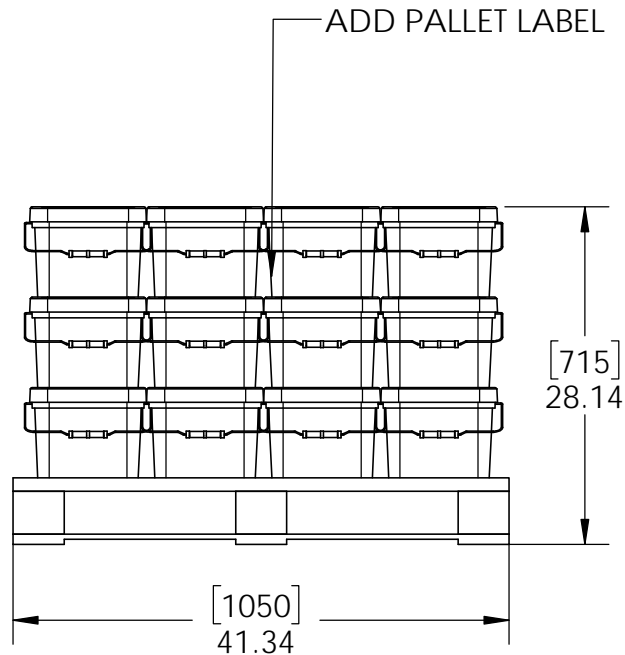
Weight: 26.82 LBS
Scale: 1:3
Last updated: 10/10/2016

56680

Product & Packaging Specs

Bulk Pack, 56680

Item #: Pallet Packing



Weight: 470 LBS
Scale: 1:16
Last updated: 10/10/2016

56680

additional pallet packing instructions
plywood on top layer
strap to pallet
clear wrap around boxes
angle iron or equivalent corners

V2.00 - Installation Instructions, Specifications and Project Plans are effective 10/10/2016. This information is updated periodically and should not be relied upon after 2 years from 10/10/2016. Please visit OZCOBP.com to get current information.