

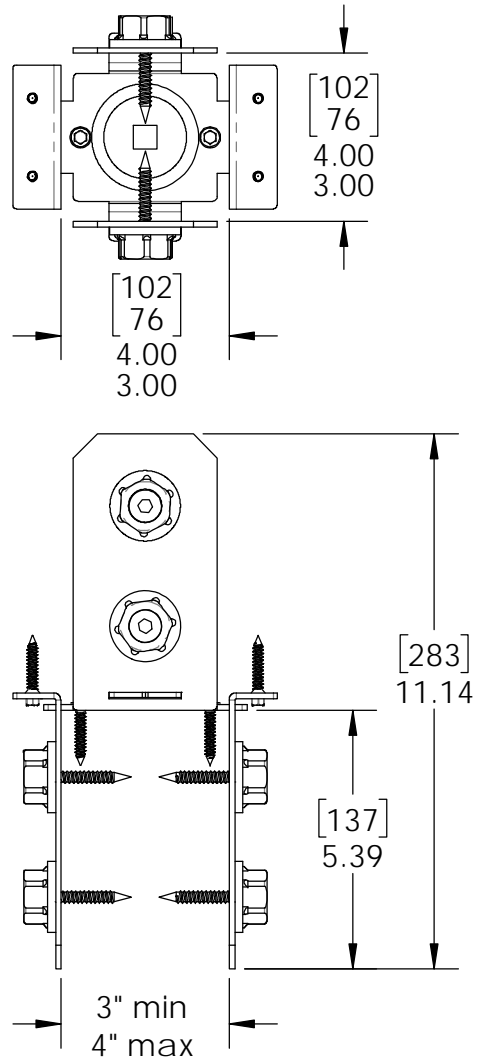


OZCO BUILDING PRODUCTS

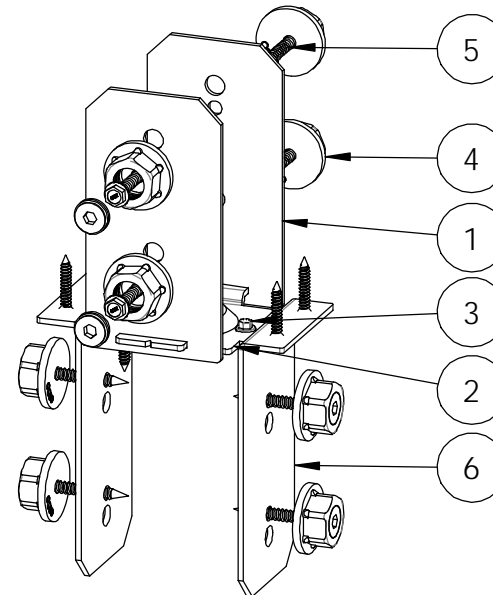
Product & Packaging Specs

4x4 Column Cap (4X4-CAP-IW)

Item #: 51778



ITEM NO.	QTY.	PART NUMBER	DESCRIPTION
1	2	51778-12	Plate, 4x4 Column Cap Compression IW
2	1	51778-11	Plate, 4x4 Column Cap
3	6	80060	Screw, 1-1/2"x1/4" Black Hex-Head (1-1/2-HX-SCR)
4	0.8	56621	1 1/2" Hex Cap Nut (HCN)
5	0.32	56625	OWT Timber Screw 1-3/4"
6	2	51778-13	Plate, 4x4 Column Cap Compression IW



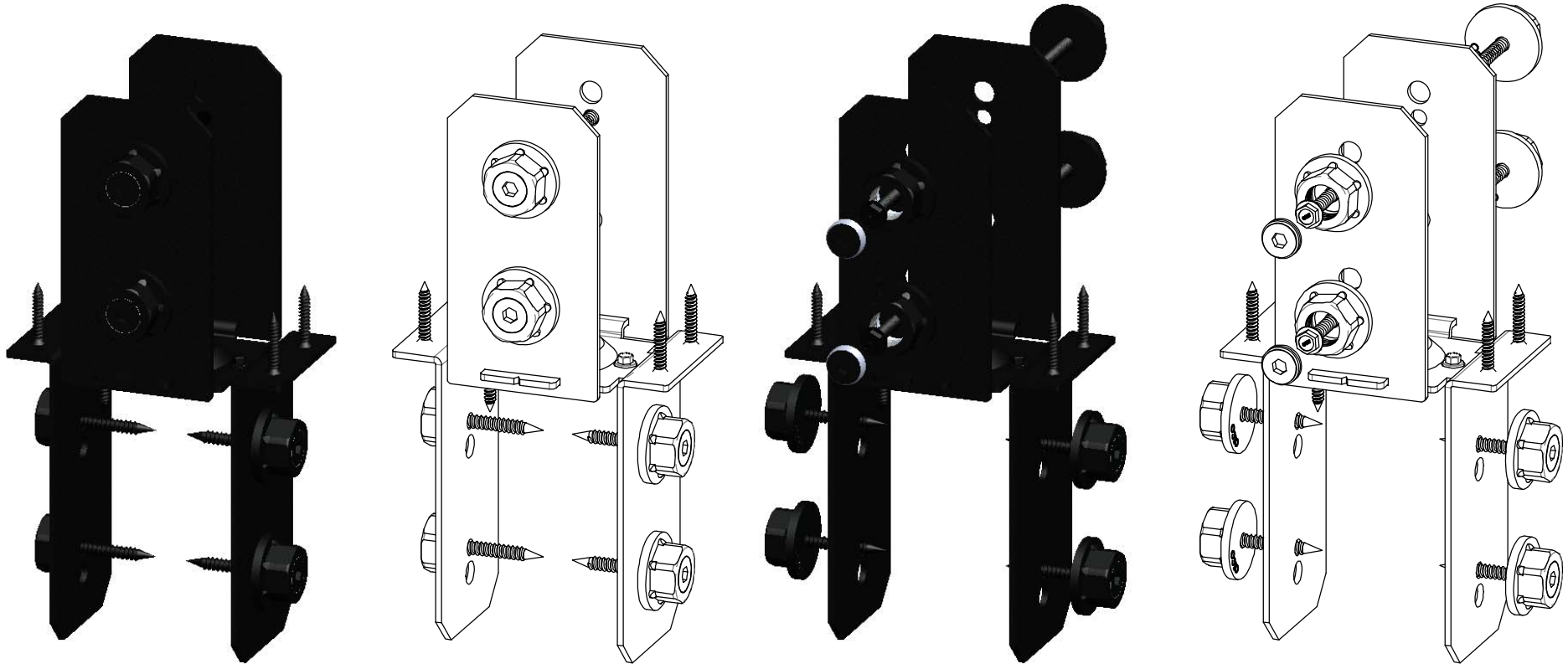
Weight: 3.29 LBS
 Scale: 1:4
 Last updated: 3/26/2018

51778

Product & Packaging Specs

4x4 Column Cap (4X4-CAP-IW)

Item #: 51778



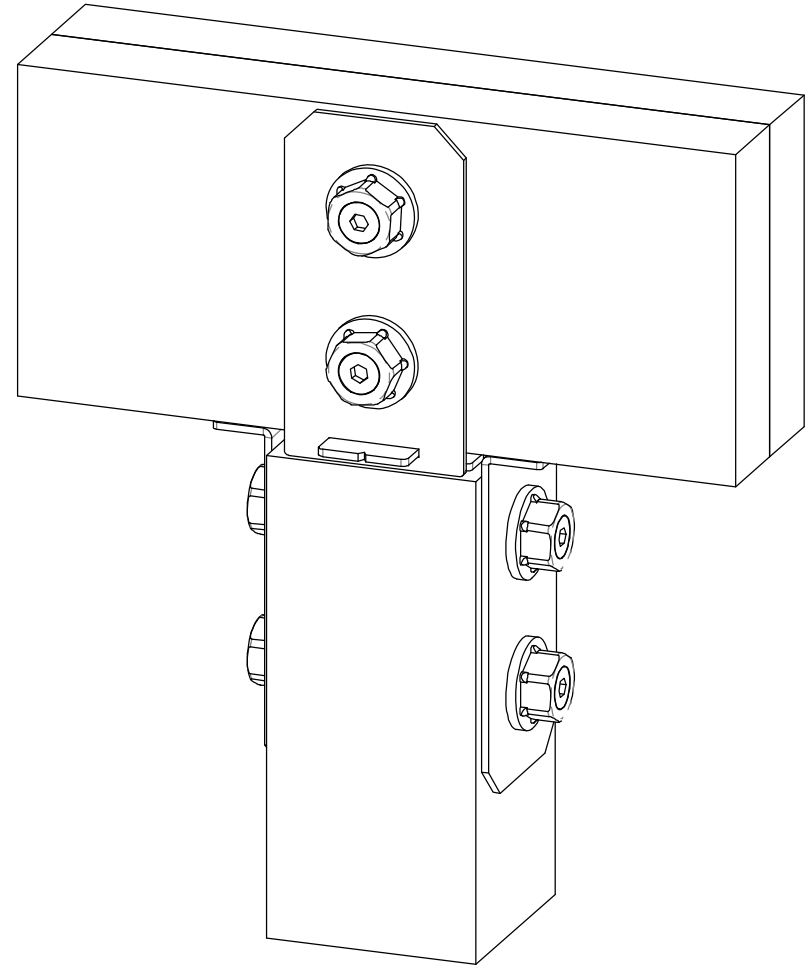
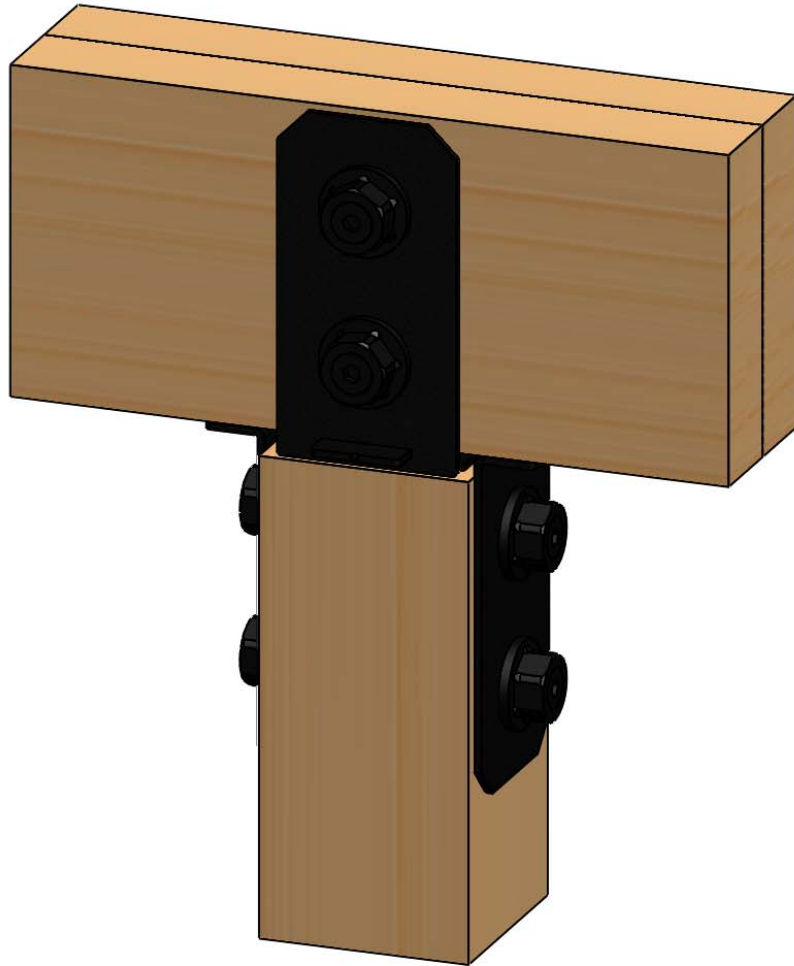
Weight: 3.29 LBS
Scale: 1:1
Last updated: 3/26/2018

51778

Product & Packaging Specs

4x4 Column Cap (4X4-CAP-IW)

Item #: Typical Installation 4x4/2x6



Weight: 3.29 LBS
Scale: 1:1
Last updated: 3/26/2018

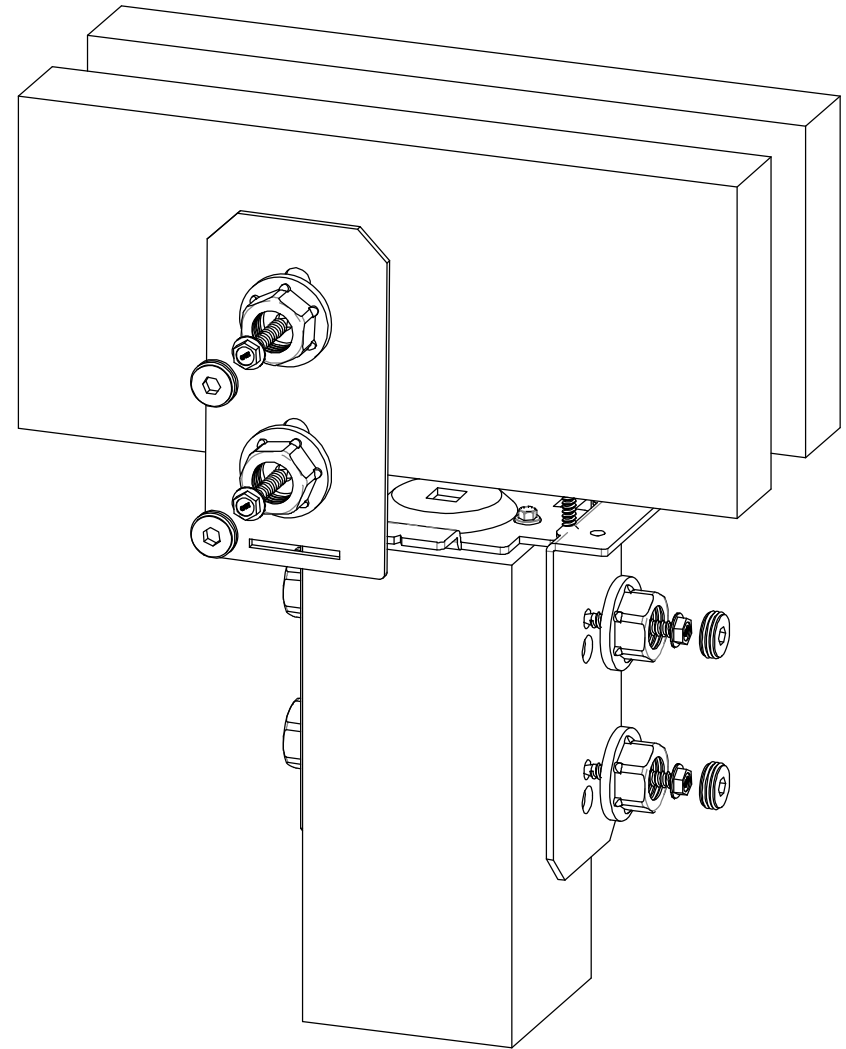
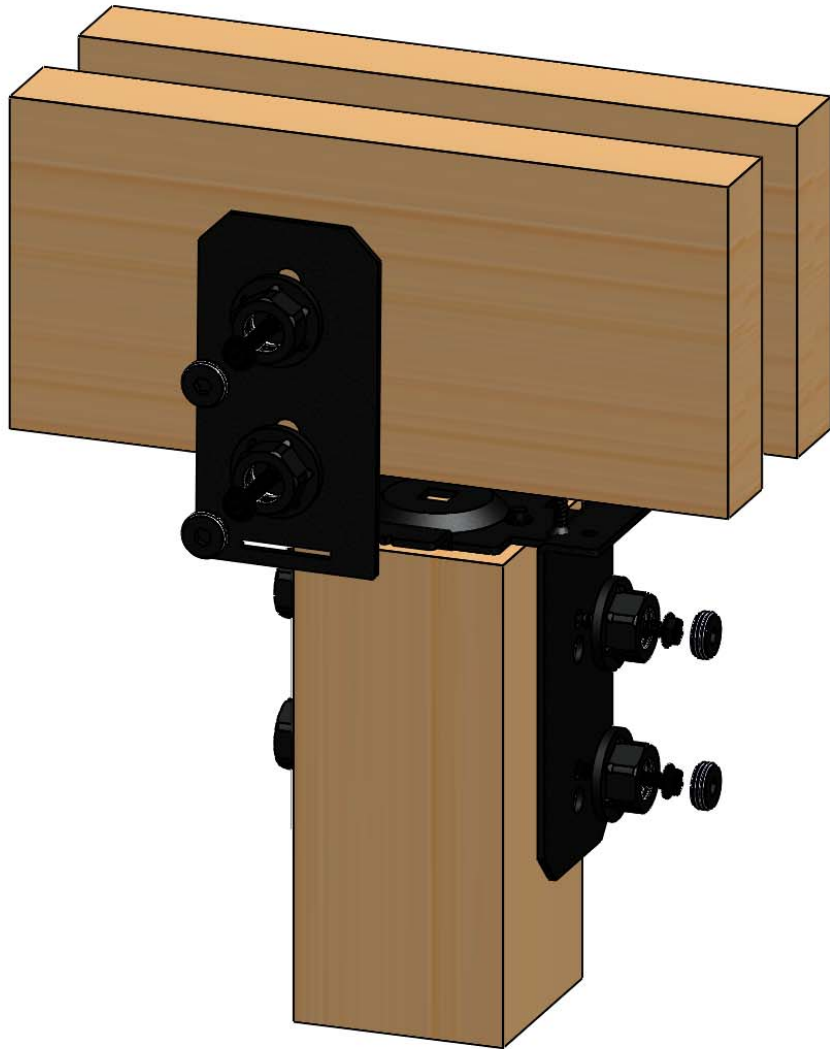
51778



Product & Packaging Specs

4x4 Column Cap (4X4-CAP-IW)

Item #: Typical Installation 4x4/2x6



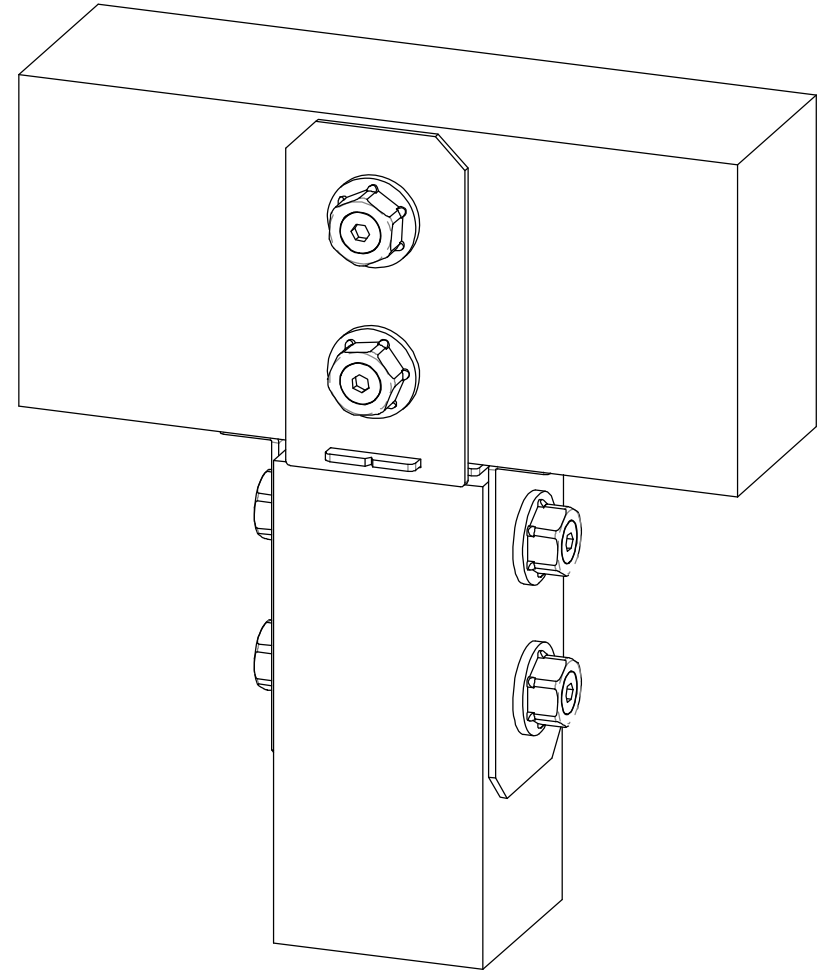
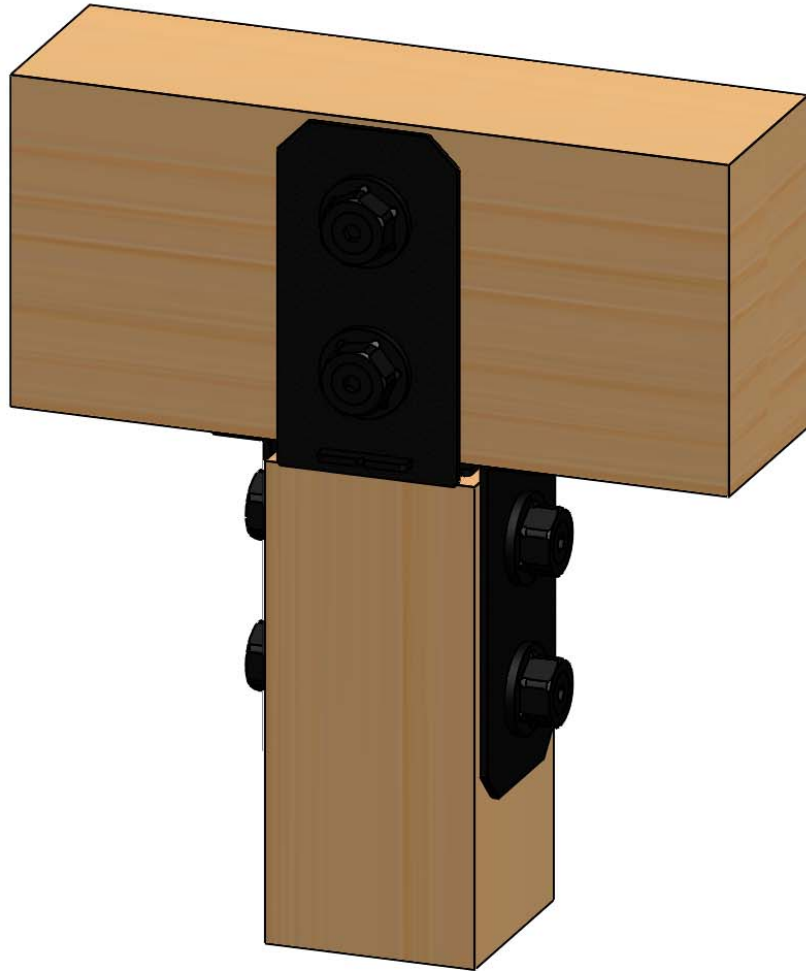
Weight: 3.29 LBS
Scale: 1:1
Last updated: 3/26/2018

51778

Product & Packaging Specs

4x4 Column Cap (4X4-CAP-IW)

Item #: Typical Installation 4x4/4x6



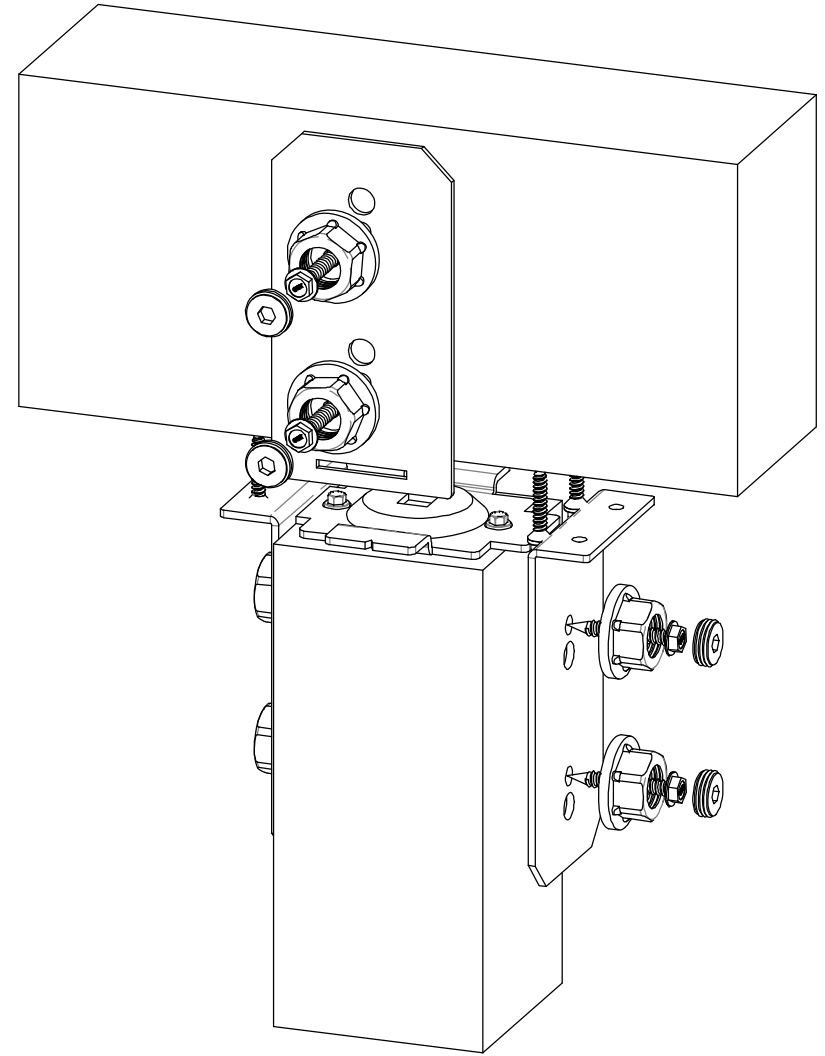
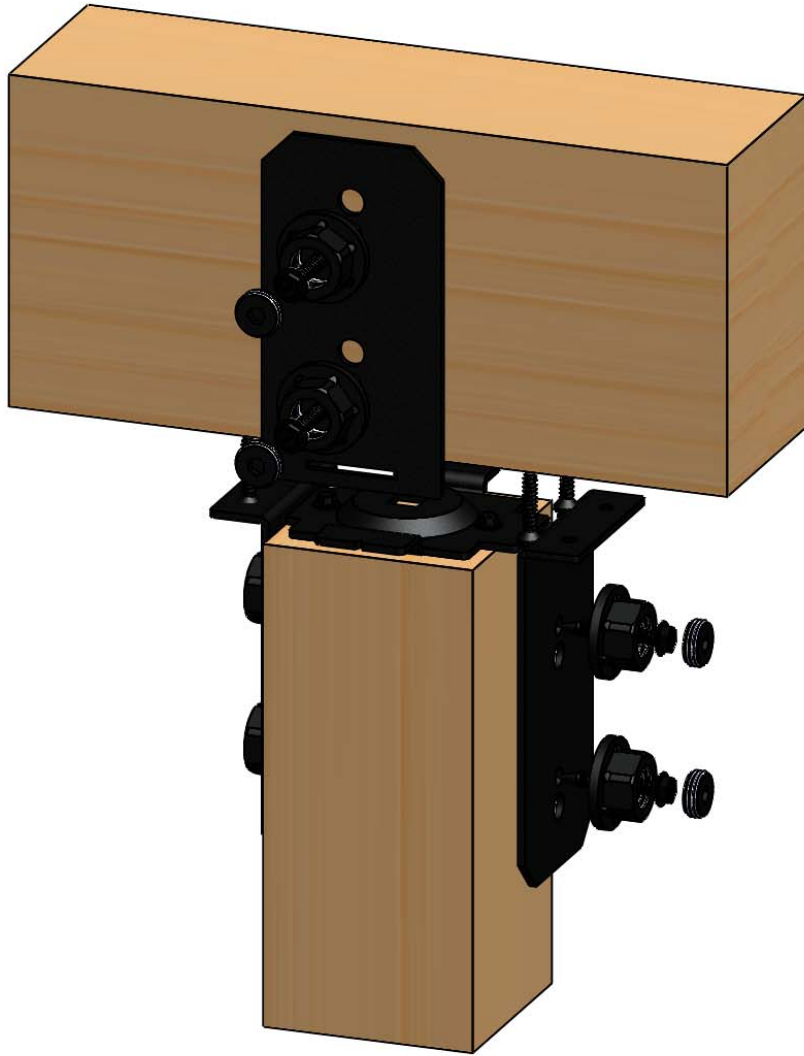
Weight: 3.29 LBS
Scale: 1:1
Last updated: 3/26/2018

51778

Product & Packaging Specs

4x4 Column Cap (4X4-CAP-IW)

Item #: Typical Installation 4x4/4x6



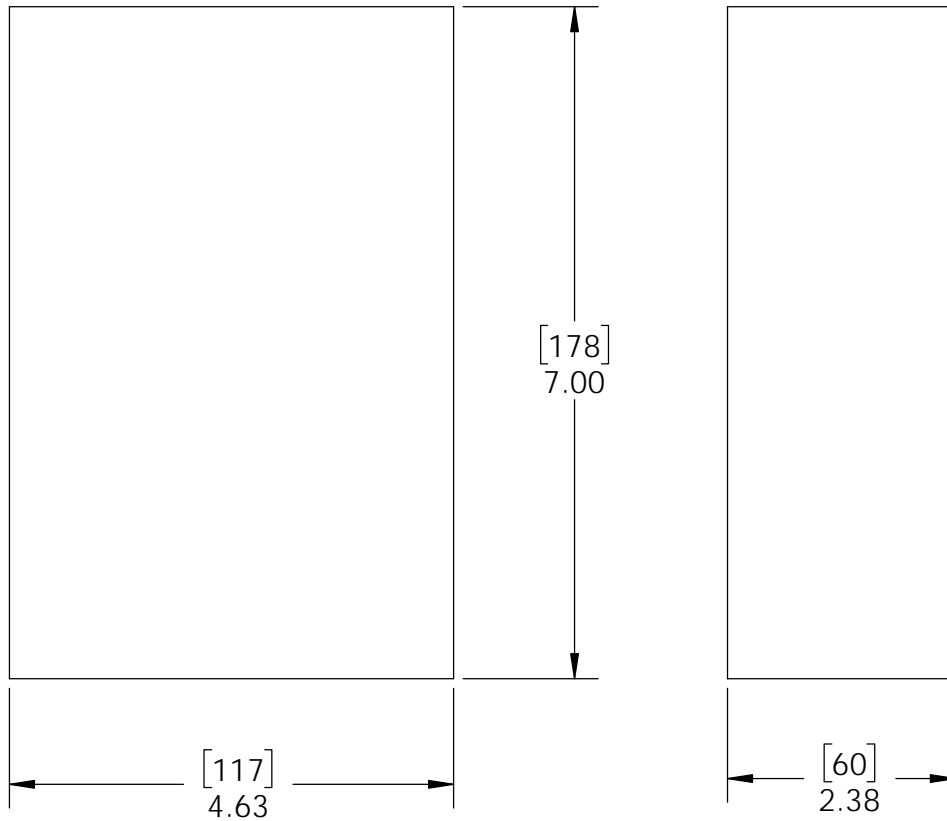
Weight: 3.29 LBS
Scale: 1:1
Last updated: 3/26/2018

51778

Product & Packaging Specs

Box, 51778

Item #: Box



Material: Corrugated Paper
 Finish: See Artwork
 Weight: 0.05 LBS
 Scale: 1:2
 Last updated: 3/26/2018

51778

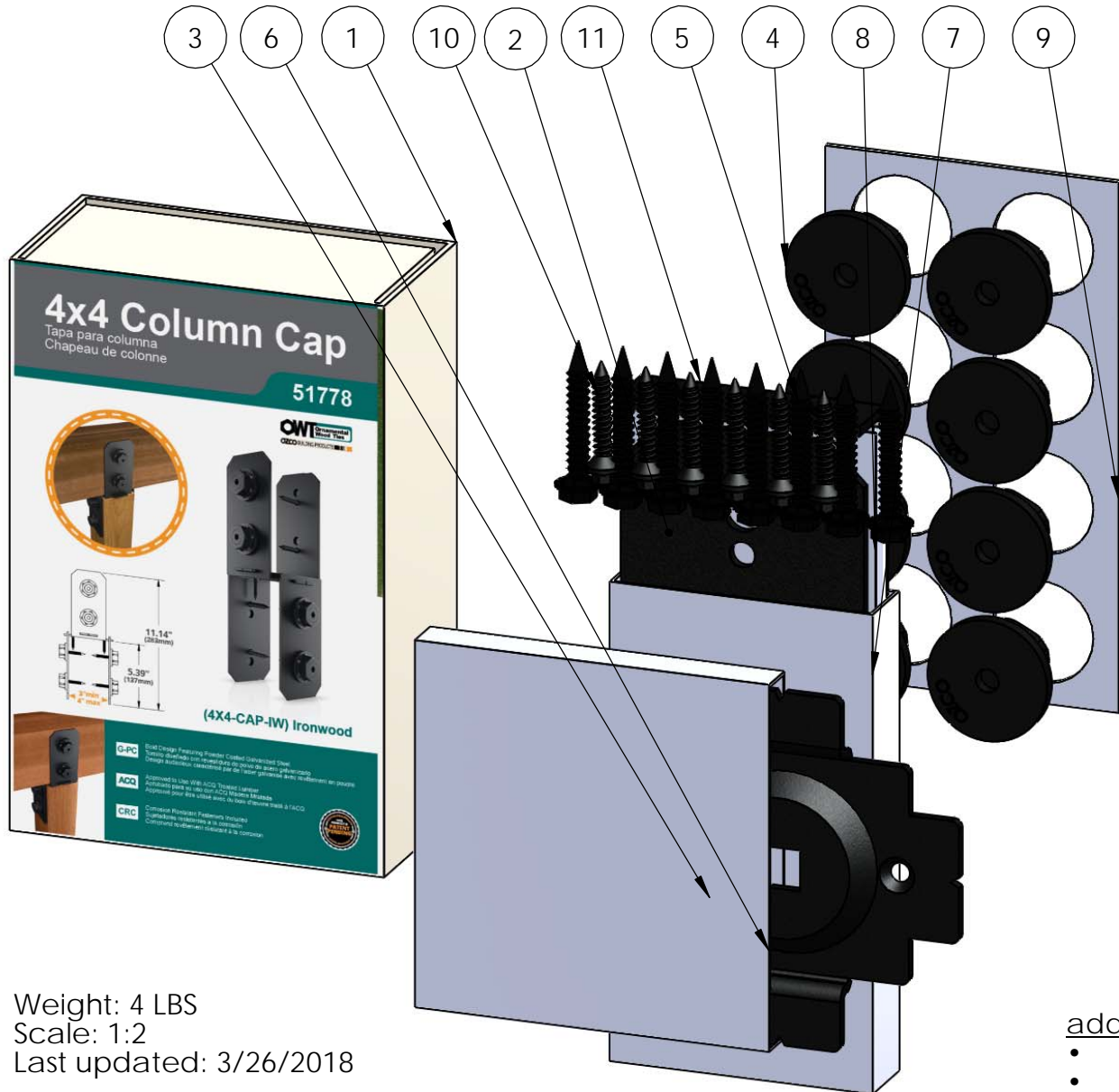


OZCO BUILDING PRODUCTS

Product & Packaging Specs

51778 Packing

Item #: Box packing



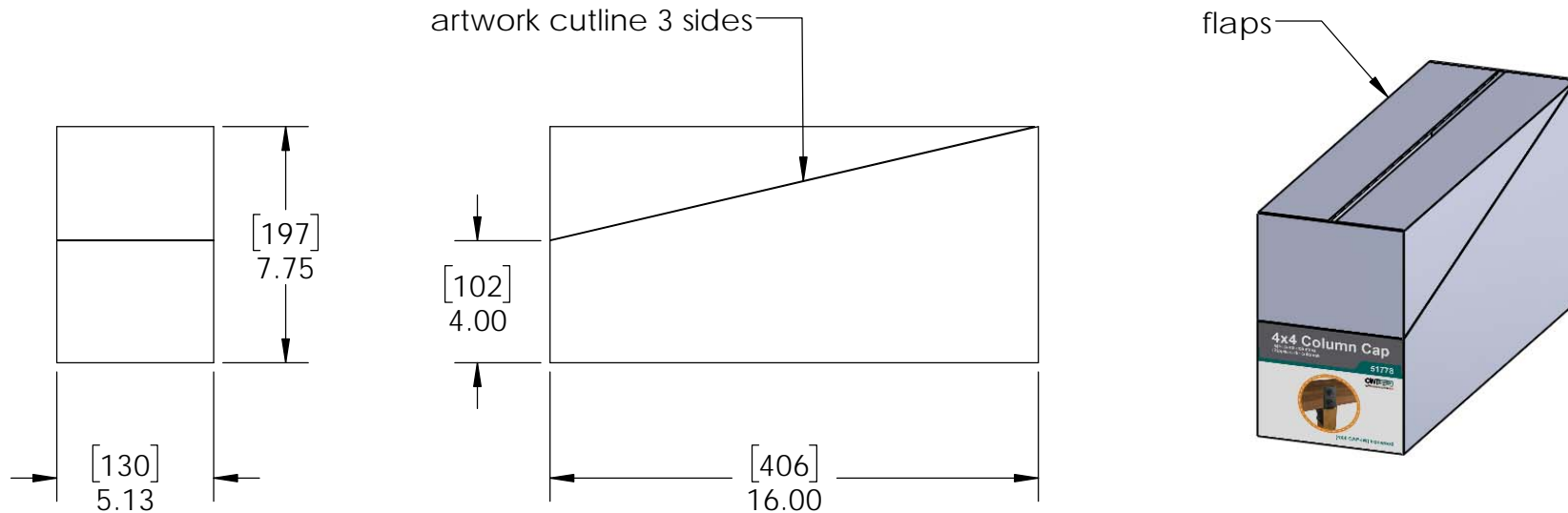
ITEM NO.	QTY.	PART NUMBER	DESCRIPTION
1	1	Box, 51778	Box, 51778
2	2	51778-12	Plate, 4x4 Column Cap Compression IW
3	1	51778-11	Plate, 4x4 Column Cap
4	0.8	56621	1 1/2" Hex Cap Nut (HCN)
5	0.32	56625	OWT Timber Screw 1-3/4"
6	1	Sleeve, 51778	Sleeve, 51778
7	1	Sleeve for Plates, 51778	Sleeve for Plates, 51778
8	1	Insert, 51778	Insert, 51778
9	1	Insert HCN, 51778	Insert HCN, 51778
10	6	80060	Screw, 1-1/2"x1/4" Black Hex-Head (1-1/2-HX-SCR)
11	2	51778-13	Plate, 4x4 Column Cap Compression IW

Weight: 4 LBS
 Scale: 1:2
 Last updated: 3/26/2018

51778

additional box packing instructions

- cellophane clear wrap package
- screws will be placed in bag (not shown)



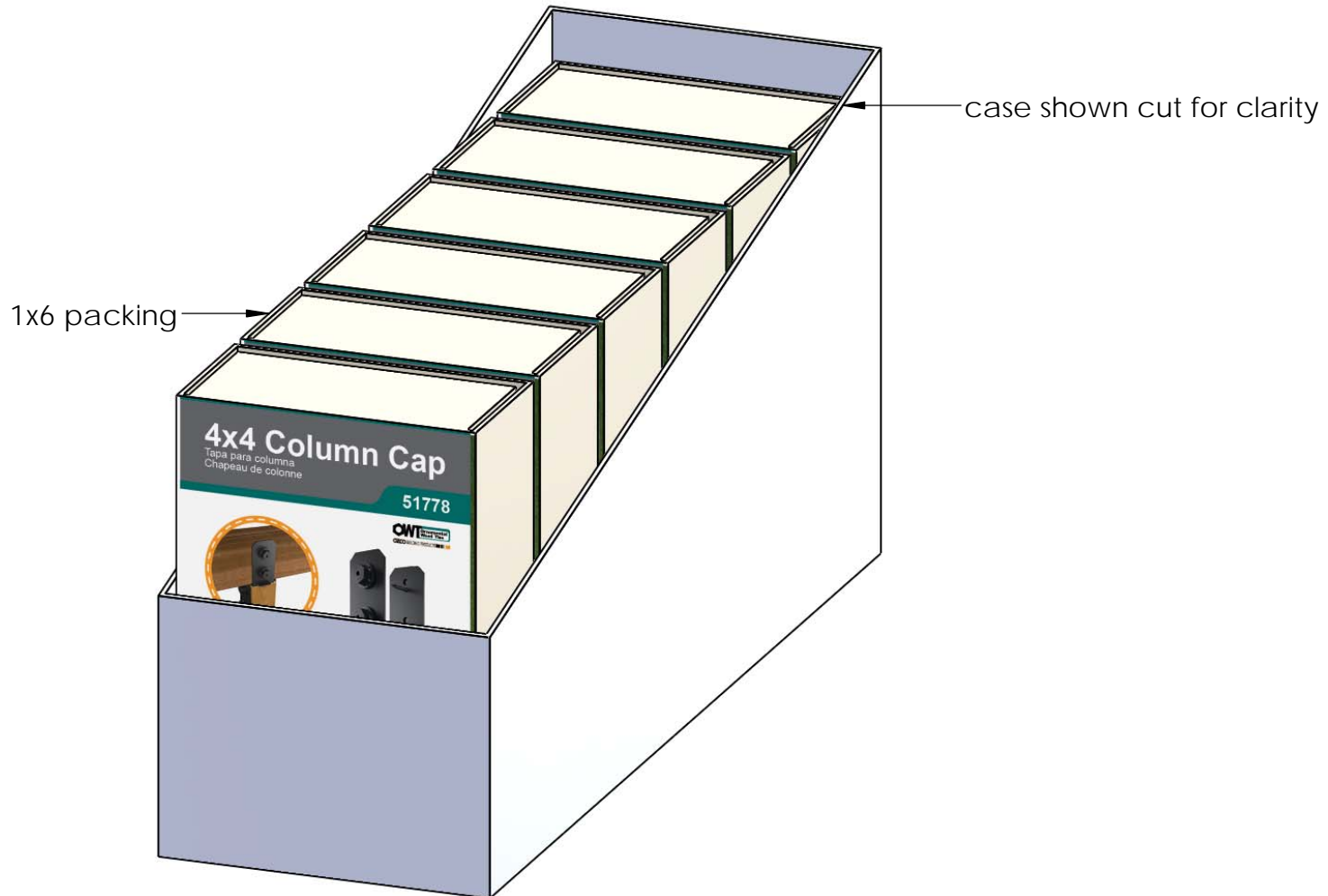
Material: Corrugated Paper
Finish: See artwork
Weight: 0.21 LBS
Scale: 1:6
Last updated: 3/26/2018

51778

Product & Packaging Specs

51778 Packing

Item #: Case packing



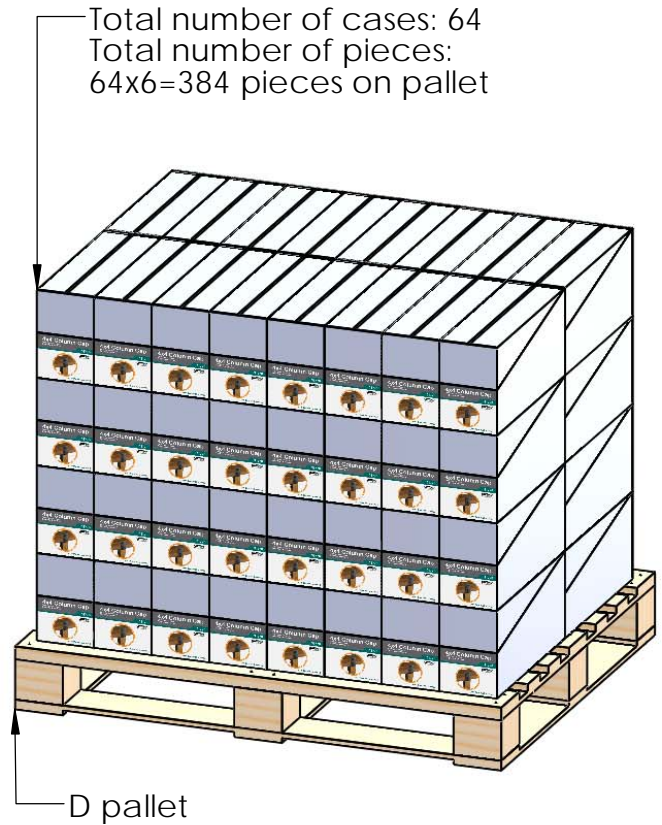
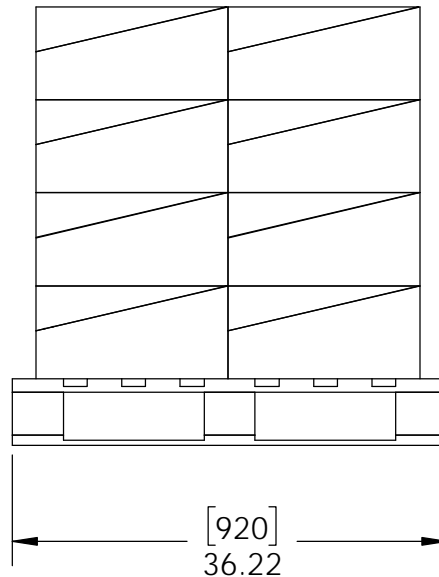
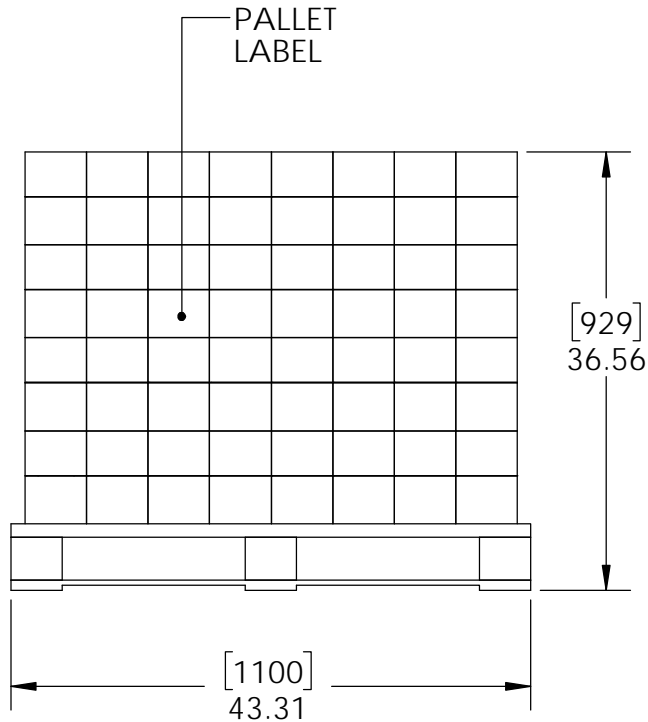
Weight: 22 LBS
Scale: 1:2.5
Last updated: 3/26/2018

51778

Product & Packaging Specs

51778 Packing

Item #: Pallet packing



Weight: 1068 LBS
 Scale: 1:16
 Last updated: 3/26/2018

51778

additional pallet packing instructions

- plywood on top layer
- strap to pallet
- clear wrap around boxes

