

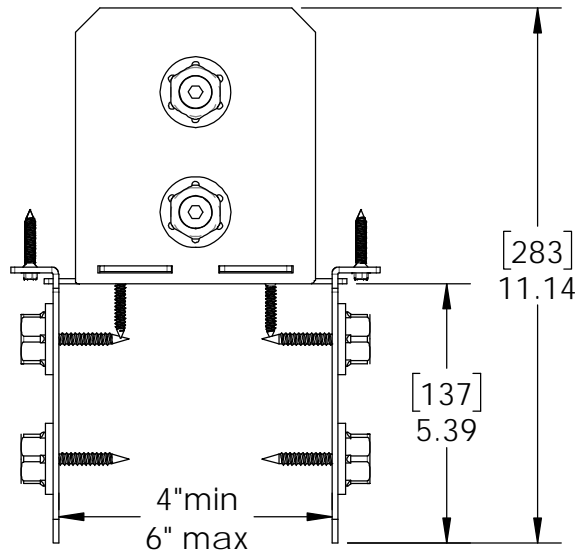
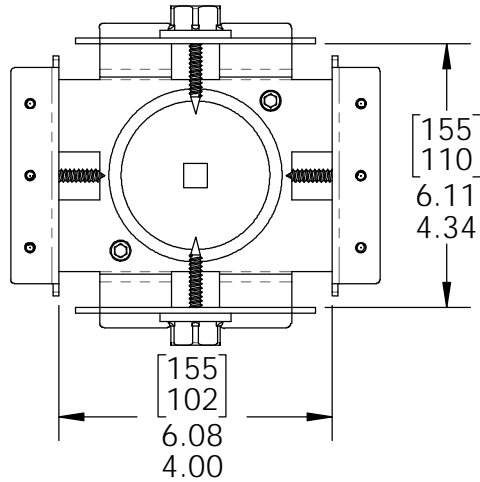


OZCO BUILDING PRODUCTS

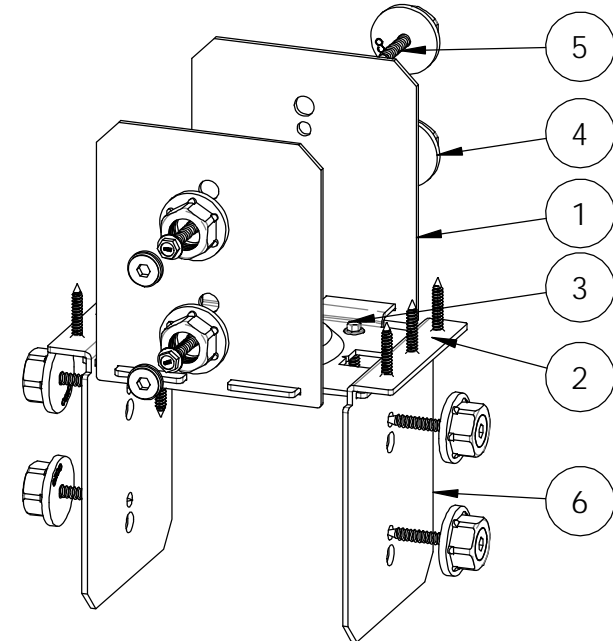
Product & Packaging Specs

6x6 Column Cap (6X6-CAP-IW)

Item #: 51779



ITEM NO.	QTY.	PART NUMBER	DESCRIPTION
1	2	51779-12	Plate, 6x6 Column Cap Compression IW
2	1	51779-11	Plate, 6x6 Column Cap
3	8	80060	Screw, 1-1/2"x1/4" Black Hex-Head (1-1/2-HX-SCR)
4	0.8	56621	1 1/2" Hex Cap Nut (HCN)
5	0.32	56625	OWT Timber Screw 1-3/4"
6	2	51779-13	Plate, 6x6 Column Cap Compression IW



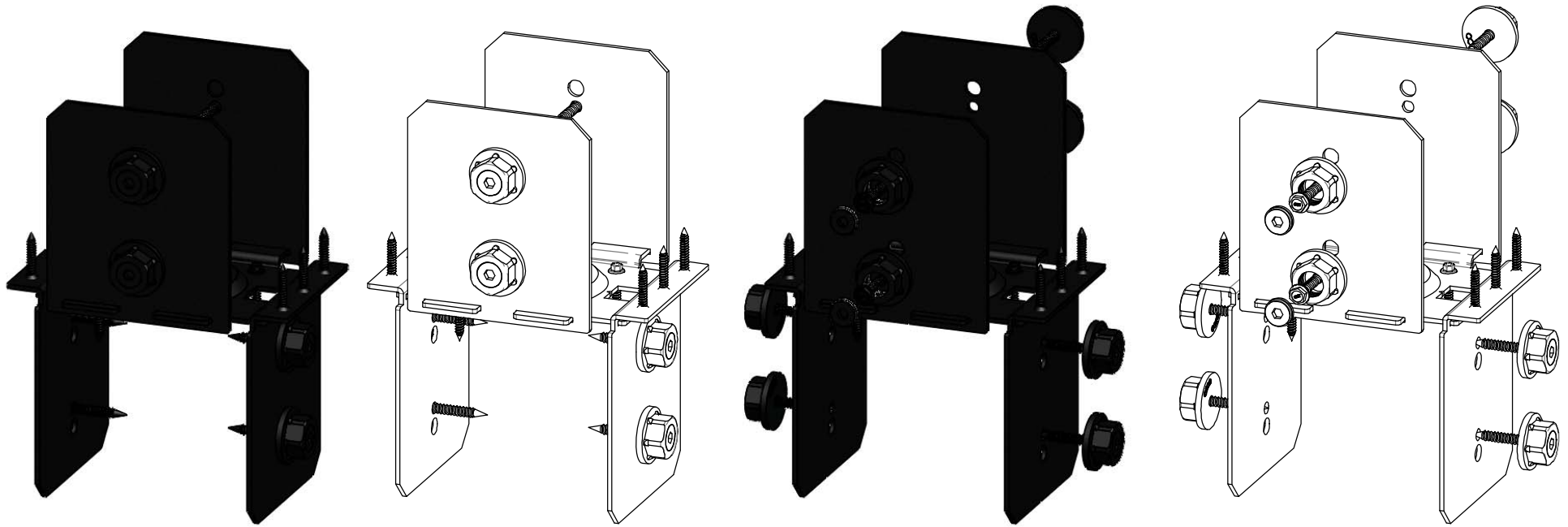
Weight: 5.49 LBS
 Scale: 1:4
 Last updated: 3/26/2018

51779

Product & Packaging Specs

6x6 Column Cap (6X6-CAP-IW)

Item #: 51779



Weight: 5.49 LBS
Scale: 1:1
Last updated: 3/26/2018

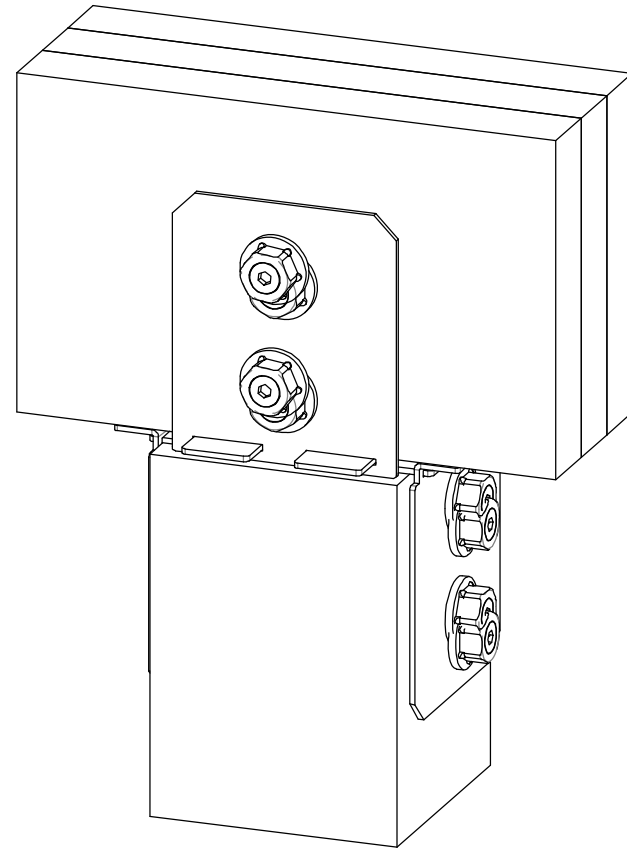
51779



Product & Packaging Specs

6x6 Column Cap (6X6-CAP-IW)

Item #: Typical Installation 6x6/2x8's



Weight: 30.39 LBS
Scale: 1:1
Last updated: 3/26/2018

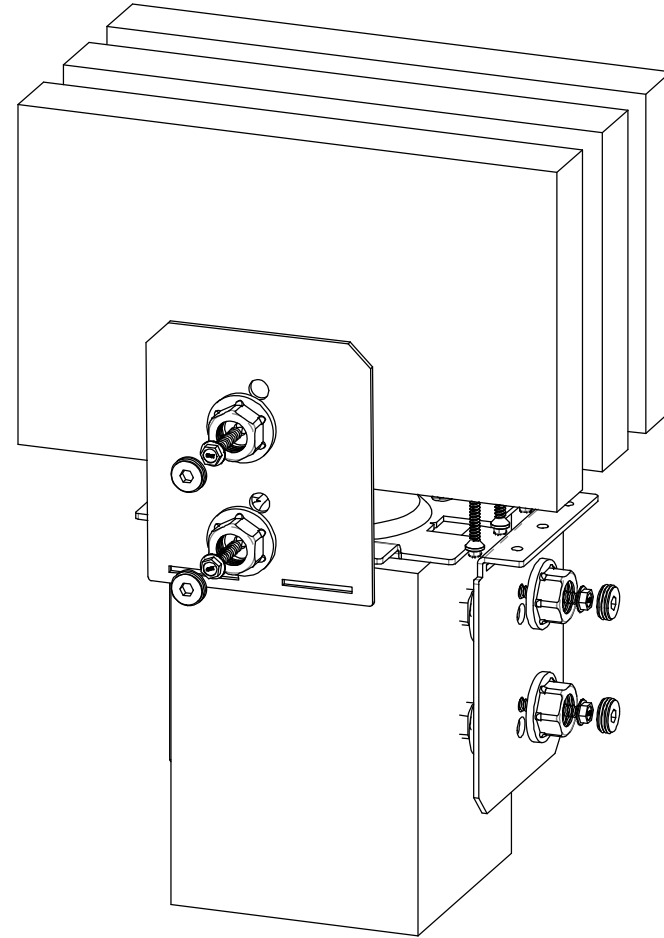
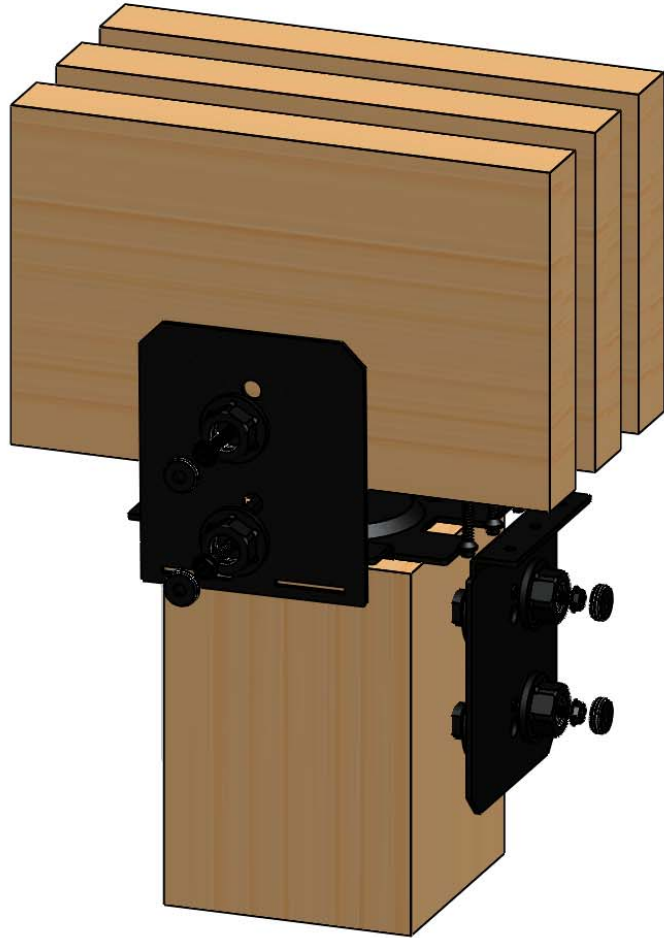
51779



Product & Packaging Specs

6x6 Column Cap (6X6-CAP-IW)

Item #: Typical Installation 6x6/2x8's



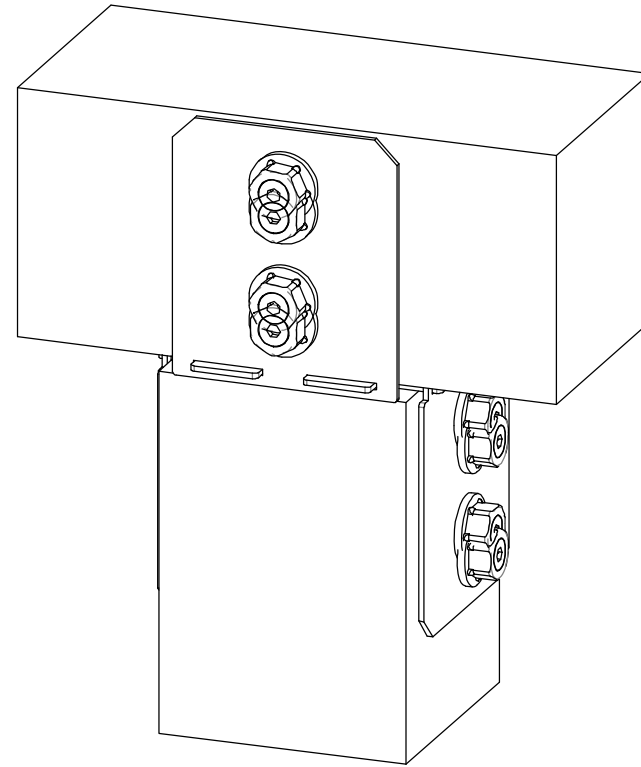
Weight: 30.39 LBS
Scale: 1:1
Last updated: 3/26/2018

51779

Product & Packaging Specs

6x6 Column Cap (6X6-CAP-IW)

Item #: Typical Installation 6x6/6x6



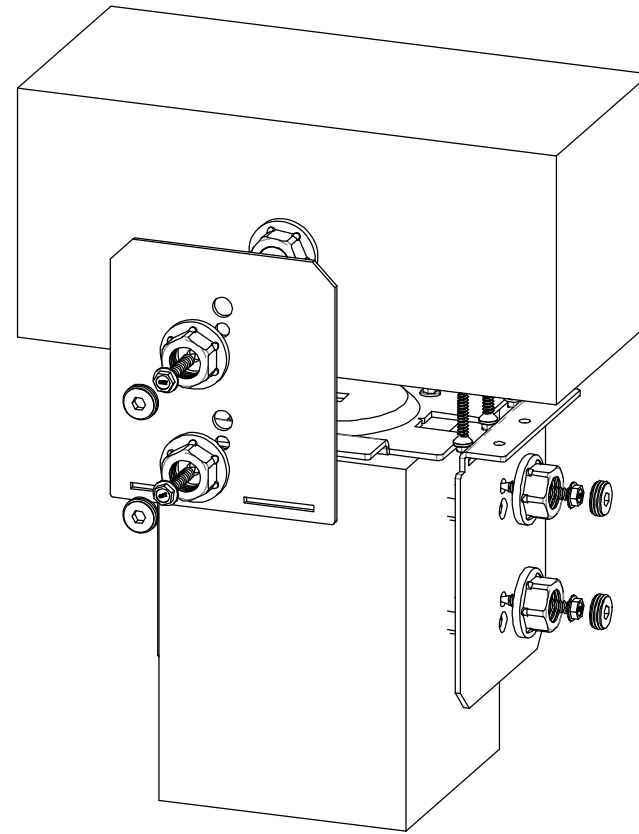
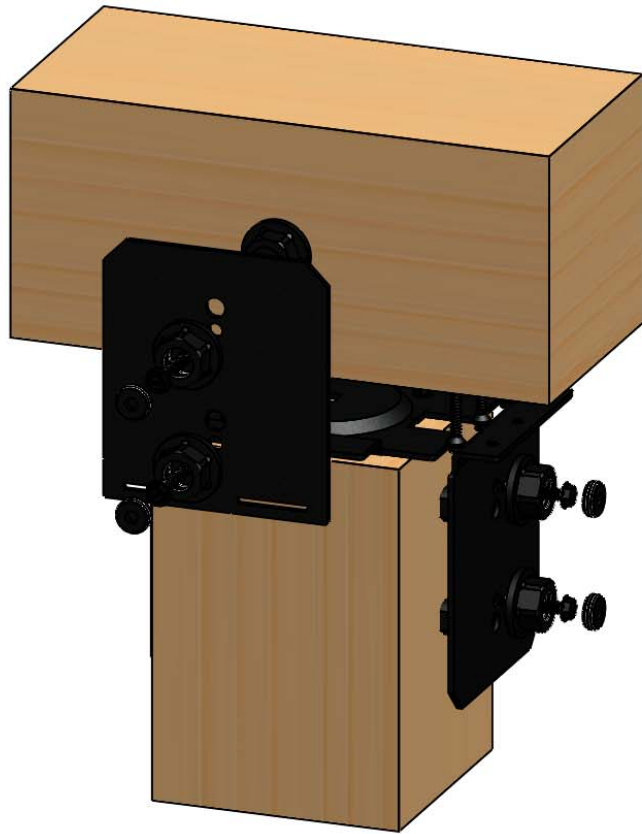
Weight: 5.49 LBS
Scale: 1:1
Last updated: 3/26/2018

51779

Product & Packaging Specs

6x6 Column Cap (6X6-CAP-IW)

Item #: Typical Installation 6x6/6x6



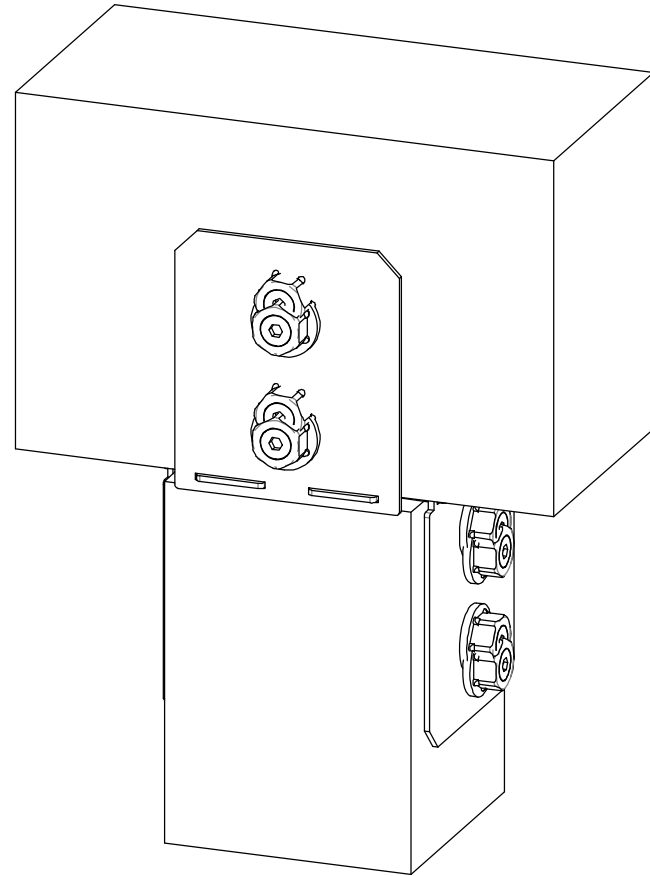
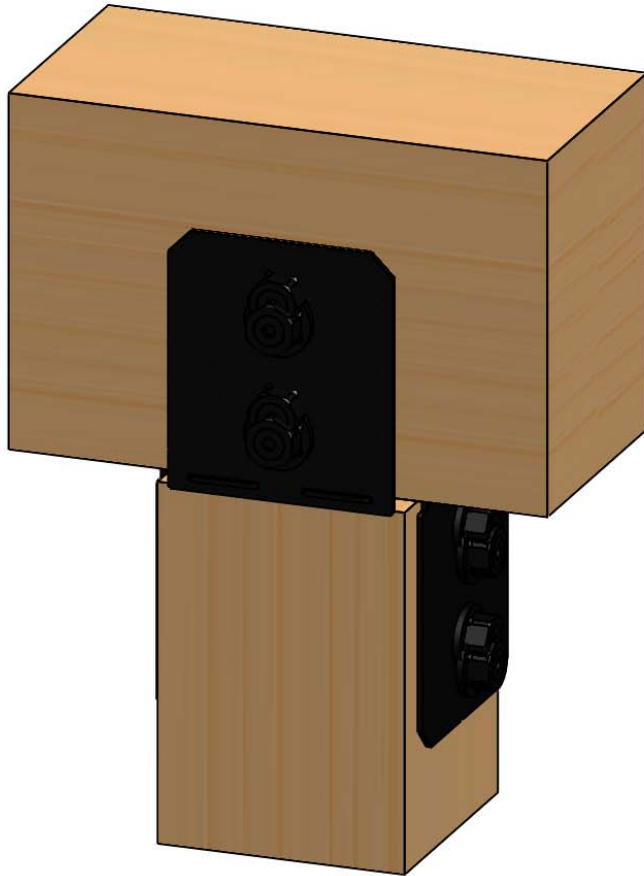
Weight: 5.49 LBS
Scale: 1:1
Last updated: 3/26/2018

51779

Product & Packaging Specs

6x6 Column Cap (6X6-CAP-IW)

Item #: Typical Installation 6x6/6x8



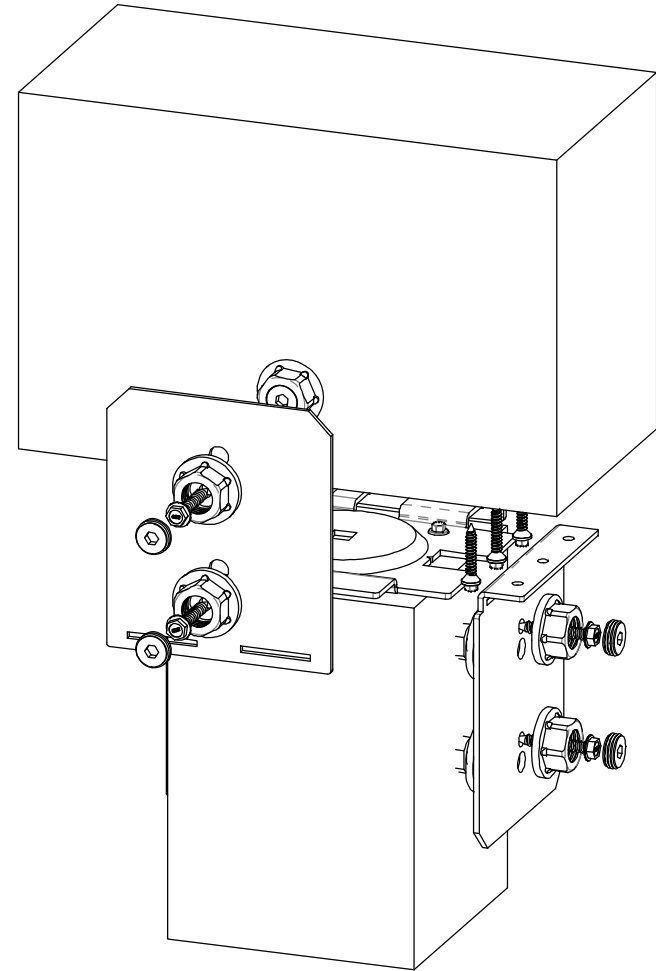
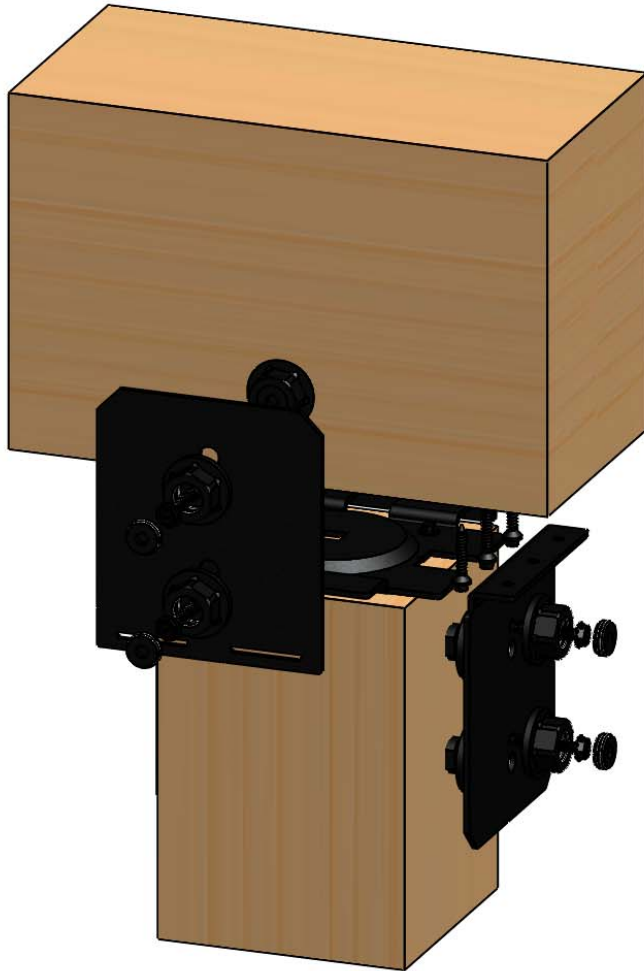
Weight: 35.82 LBS
Scale: 1:1
Last updated: 3/26/2018

51779

Product & Packaging Specs

6x6 Column Cap (6X6-CAP-IW)

Item #: Typical Installation 6x6/6x8



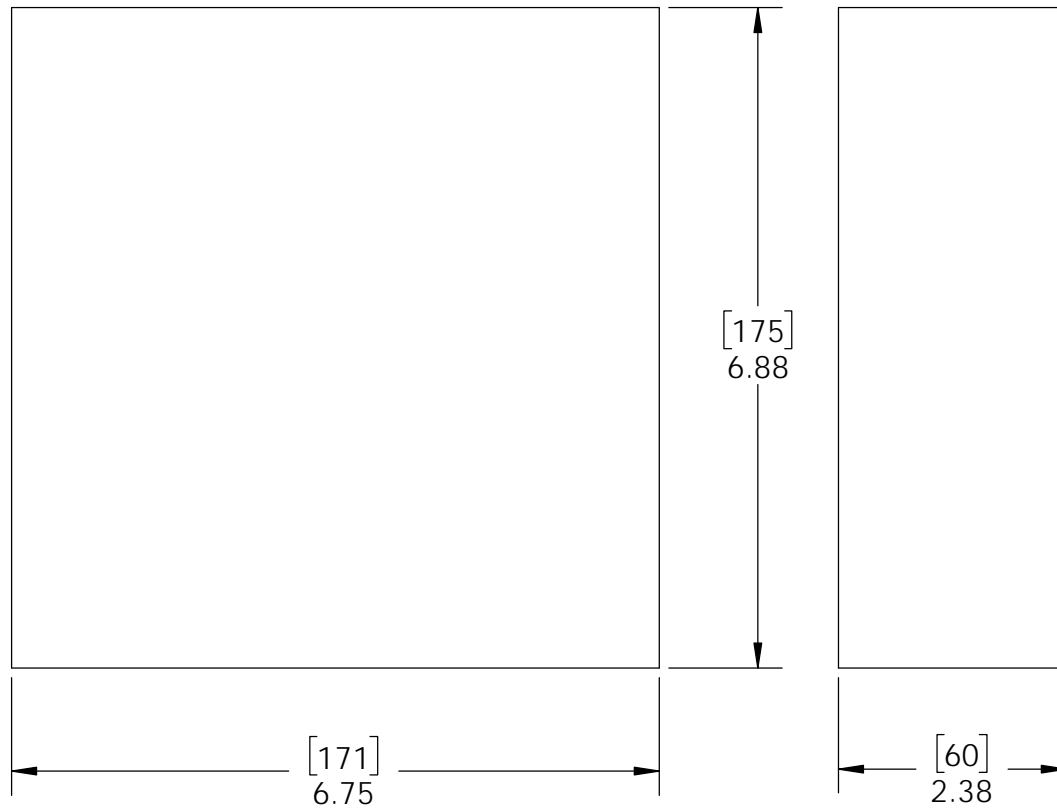
Weight: 35.82 LBS
Scale: 1:1
Last updated: 3/26/2018

51779

Product & Packaging Specs

Box, 51779

Item #: Box



Material: Corrugated Paper
 Finish: See Artwork
 Weight: 0.07 LBS
 Scale: 1:2
 Last updated: 3/26/2018

51779

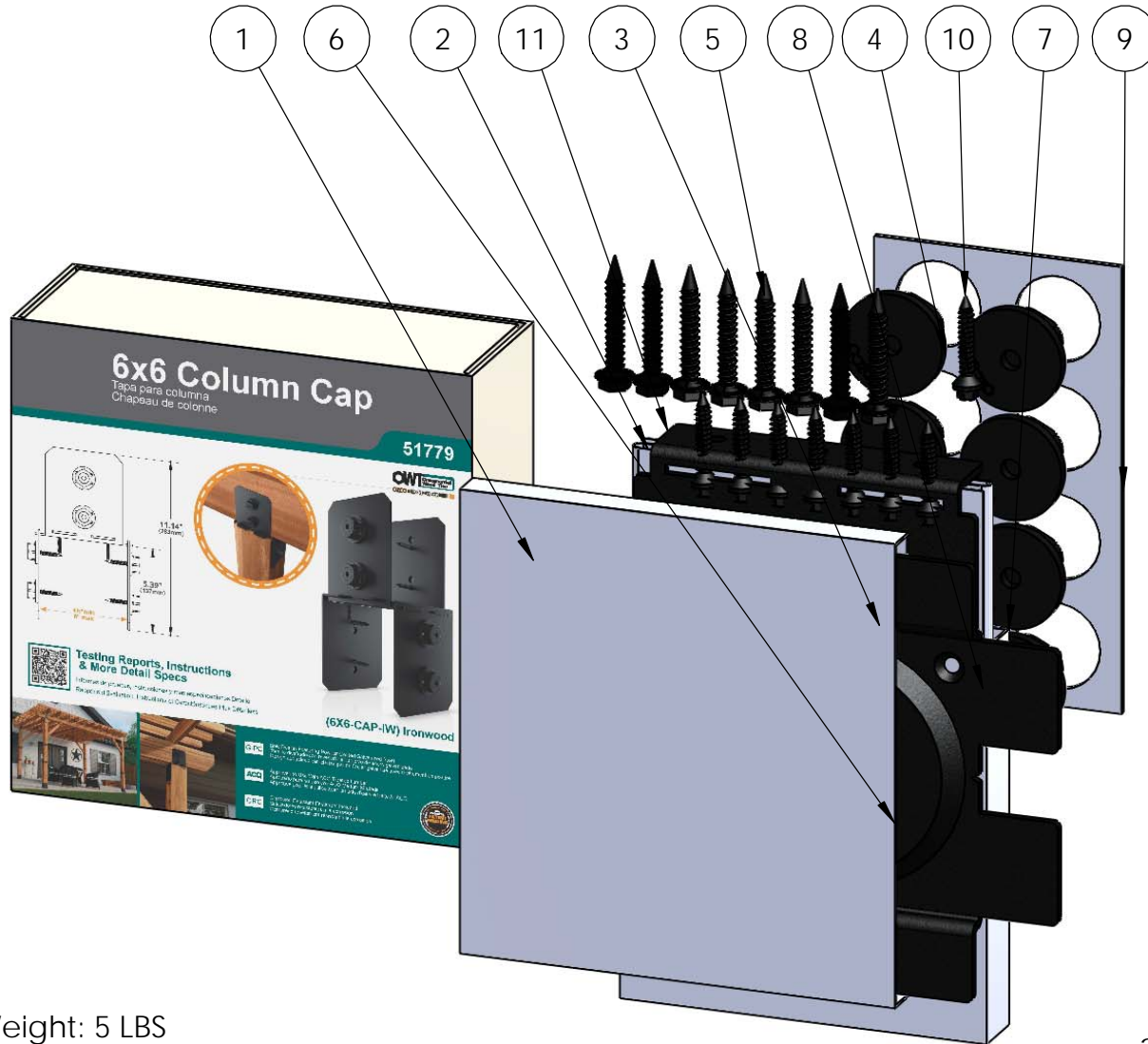


OZCO BUILDING PRODUCTS

Product & Packaging Specs

51779 Packing

Item #: Box packing



ITEM NO.	QTY.	PART NUMBER	DESCRIPTION
1	1	Box, 51779	Box, 51779
2	2	51779-12	Plate, 6x6 Column Cap Compression IW
3	1	51779-11	Plate, 6x6 Column Cap
4	0.8	56621	1 1/2" Hex Cap Nut (HCN)
5	0.32	56625	OWT Timber Screw 1-3/4"
6	1	Sleeve, 56679	Sleeve, 56679
7	1	Sleeve for Plates, 56679	Sleeve for Plates, 56679
8	1	Insert, 56679	Insert, 56679
9	1	Insert HCN, 56678	Insert HCN, 56678
10	8	80060	Screw, 1-1/2"x1/4" Black Hex-Head (1-1/2-HX-SCR)
11	2	51779-13	Plate, 6x6 Column Cap Compression IW

Weight: 5 LBS
 Scale: 1:2.5
 Last updated: 3/26/2018

51779

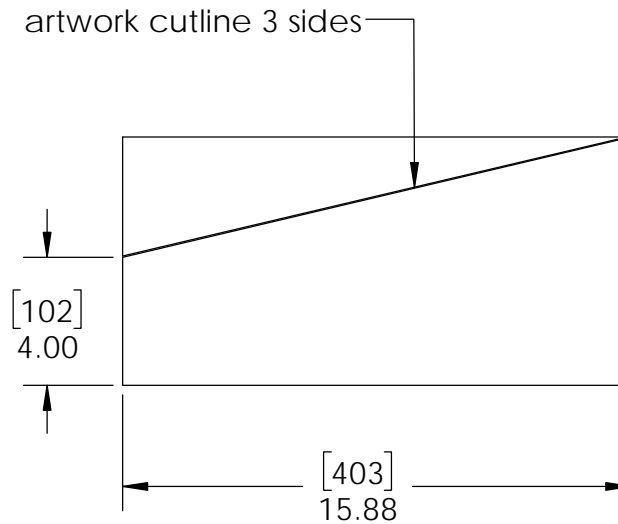
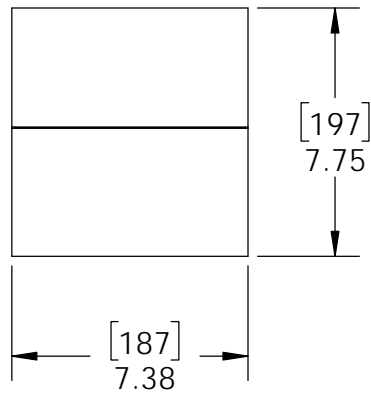
additional box packing instructions

- cellophane clear wrap package
- screws will be placed in bag (not shown)

Product & Packaging Specs

Case, 51779

Item #: Case



Material: Corrugated Paper
 Finish: See artwork
 Weight: 0.26 LBS
 Scale: 1:6
 Last updated: 3/26/2018

51779

Product & Packaging Specs

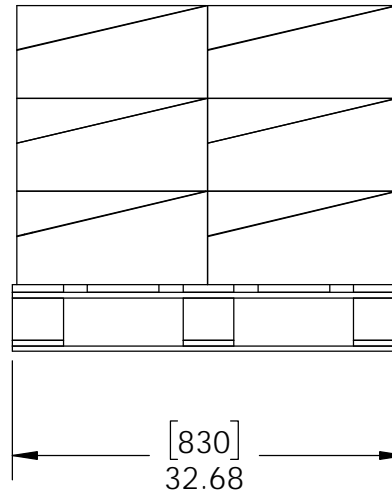
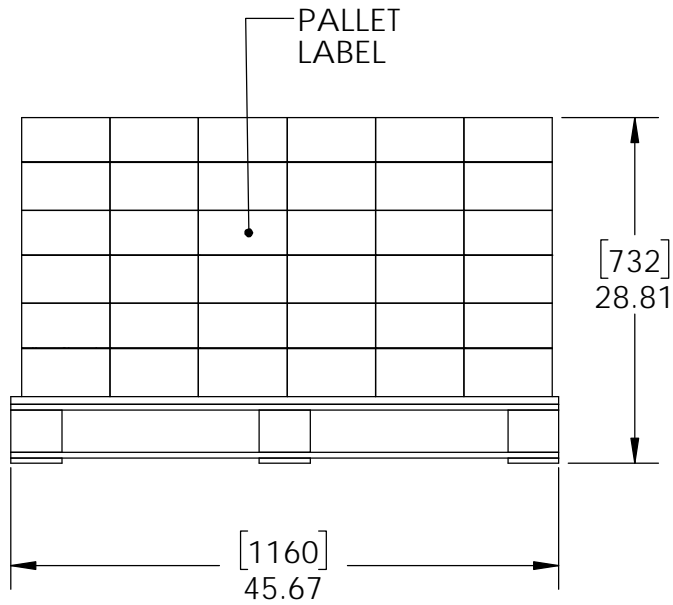
51779 Packing

Item #: Case packing

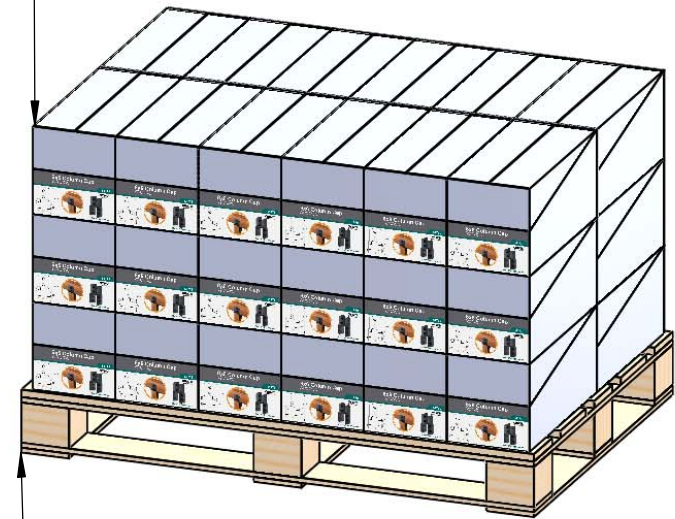


Weight: 33 LBS
Scale: 1:2.5
Last updated: 3/26/2018

51779



Total number of cases: 36
 Total number of pieces:
 $36 \times 6 = 216$ pieces on pallet



C pallet

Weight: 1192 LBS
 Scale: 1:16
 Last updated: 3/26/2018

additional pallet packing instructions

- plywood on top layer
- strap to pallet
- clear wrap around boxes

