

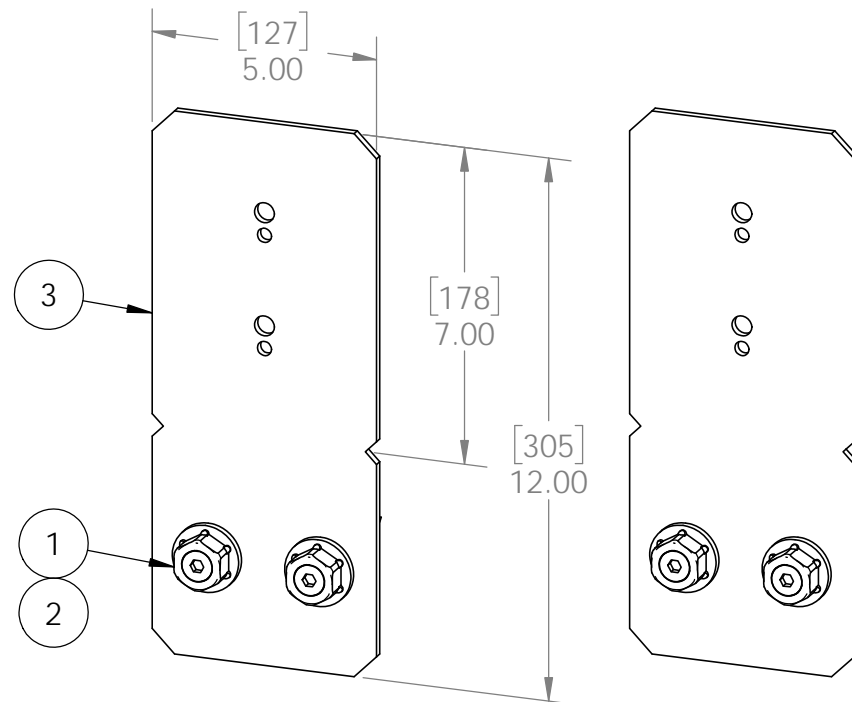
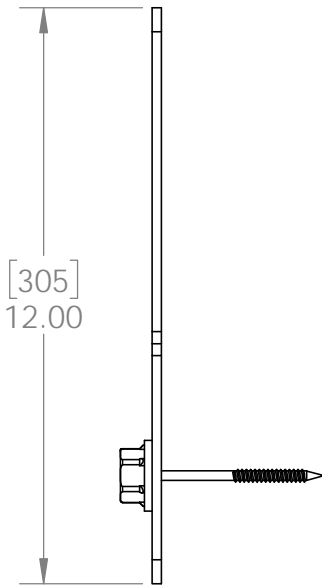
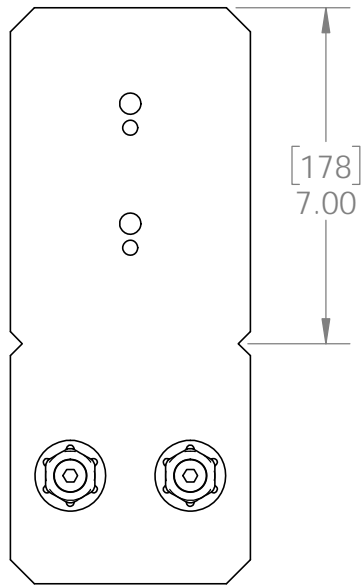
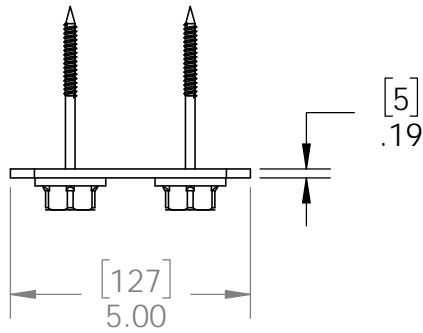


OZCO BUILDING PRODUCTS

# Product & Packaging Specs

## 8" Post to Beam Flush (P2B-IW-8F)

Item #: 51776



ITEM NO.	QTY.	PART NUMBER	DESCRIPTION
1	2	56621	1 1/2" Hex Cap Nut (HCN)
2	2	56627	OWT Timber Screw 3-3/4"
3	1	51776-11	Bracket, 8" Flush Post to Beam

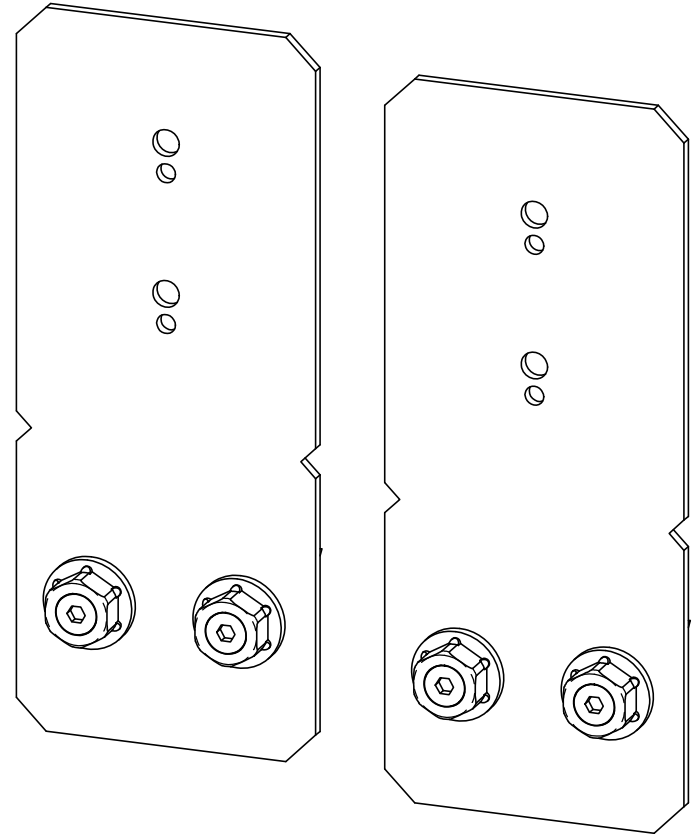
Weight: 3.24 LBS  
 Scale: 1:4  
 Last updated: 10/10/2016

51776

# Product & Packaging Specs

## 8" Post to Beam Flush (P2B-IW-8F)

Item #: 51776



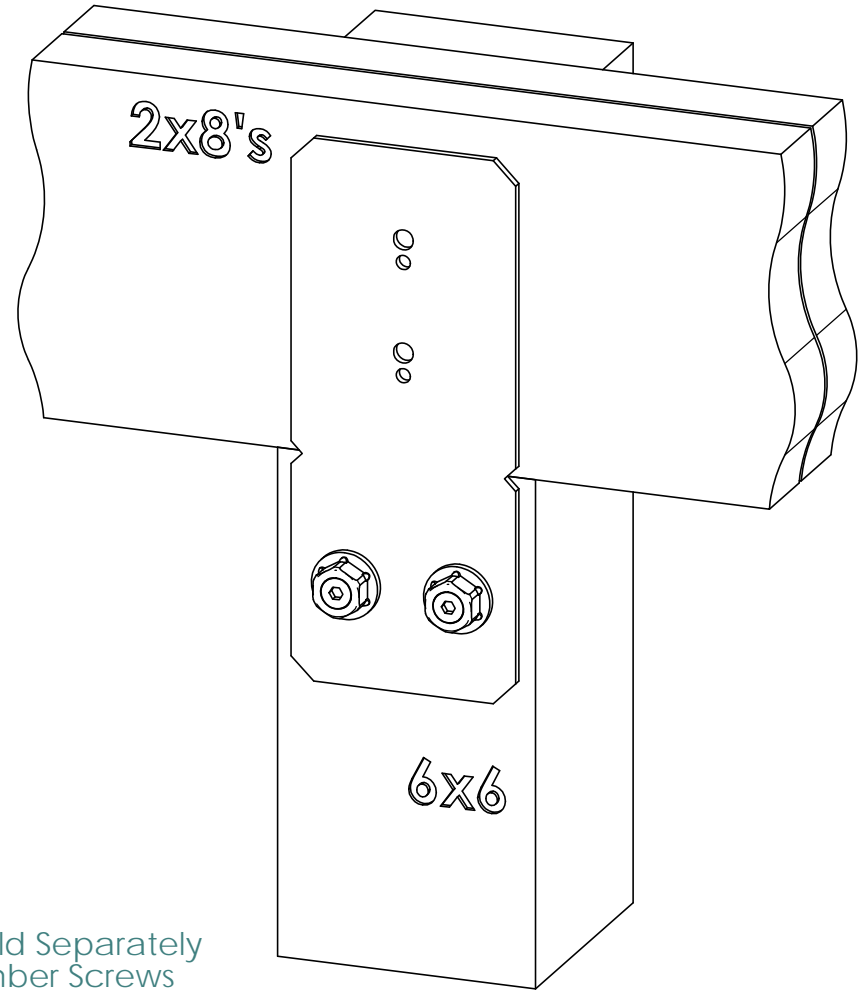
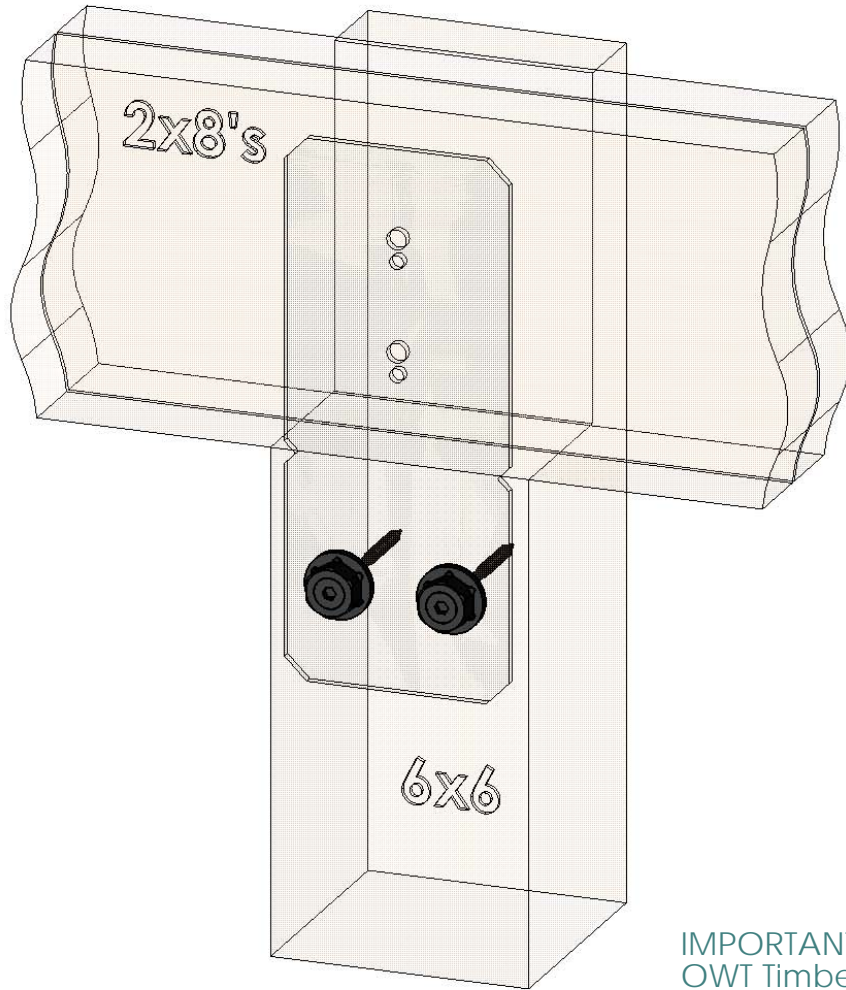
Weight: 3.24 LBS  
Scale: 1:3  
Last updated: 10/10/2016

51776

# Product & Packaging Specs

## 8" Post to Beam Flush (P2B-IW-8F)

Item #: Typical Installation & Basic Assembly



**IMPORTANT:** Each Sold Separately  
OWT Timber Bolts, Timber Screws  
and/or Hex Cap Nuts are  
**REQUIRED** for proper installation.

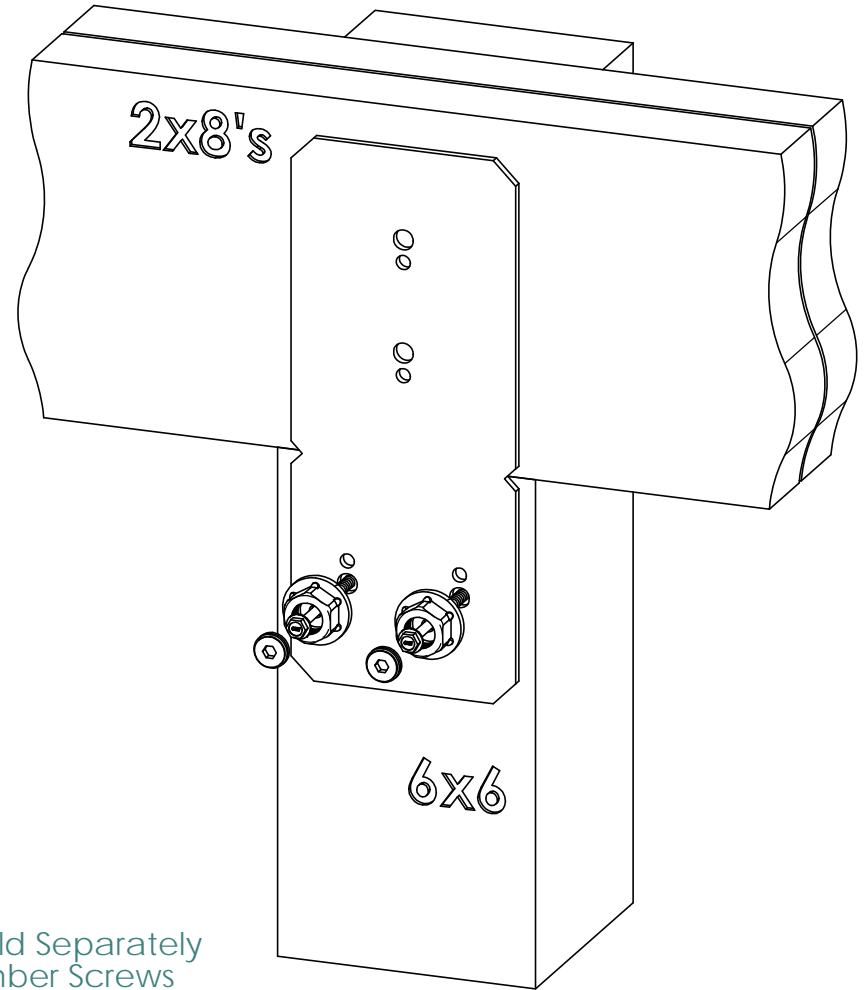
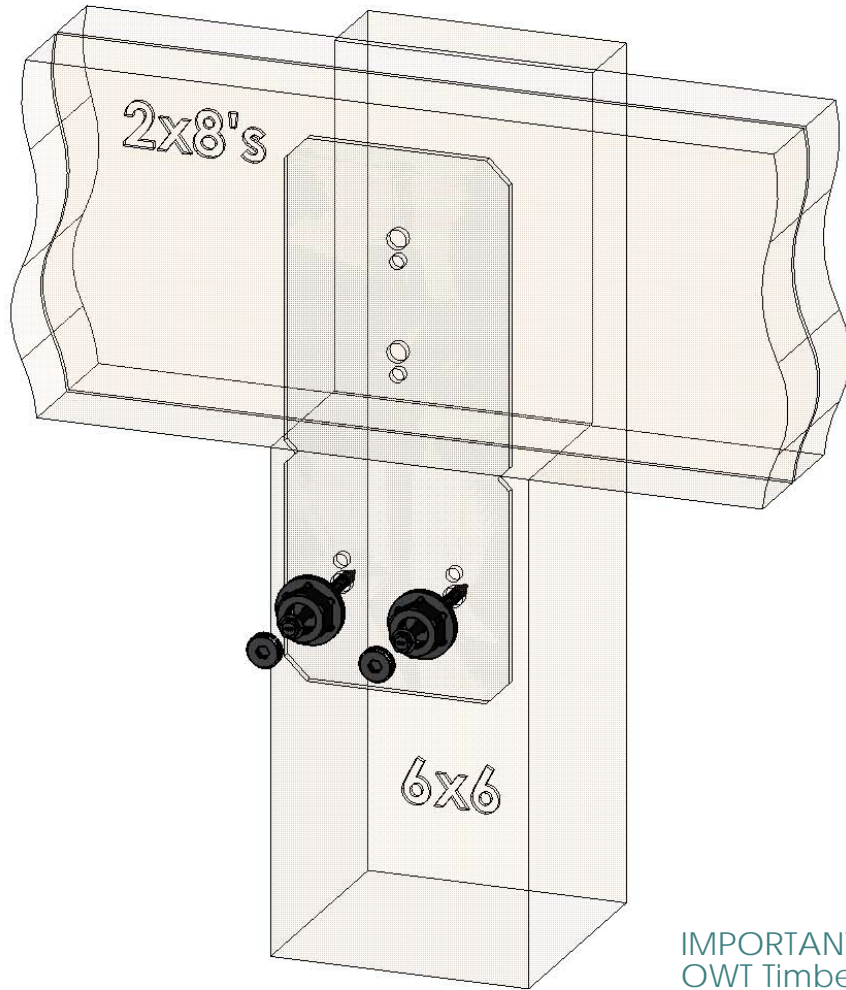
Weight: LBS  
Scale: 1:4  
Last updated: 10/10/2016

51776

# Product & Packaging Specs

## 8" Post to Beam Flush (P2B-IW-8F)

Item #: Typical Installation & Basic Assembly



**IMPORTANT:** Each Sold Separately  
OWT Timber Bolts, Timber Screws  
and/or Hex Cap Nuts are  
**REQUIRED** for proper installation.

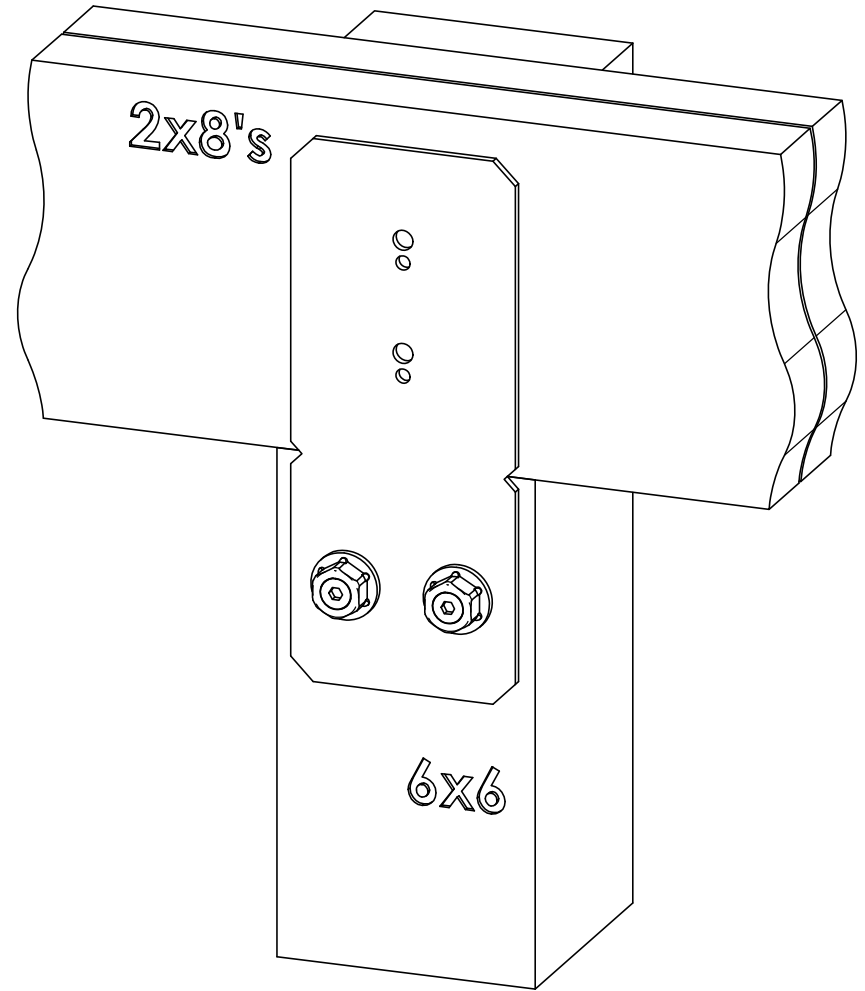
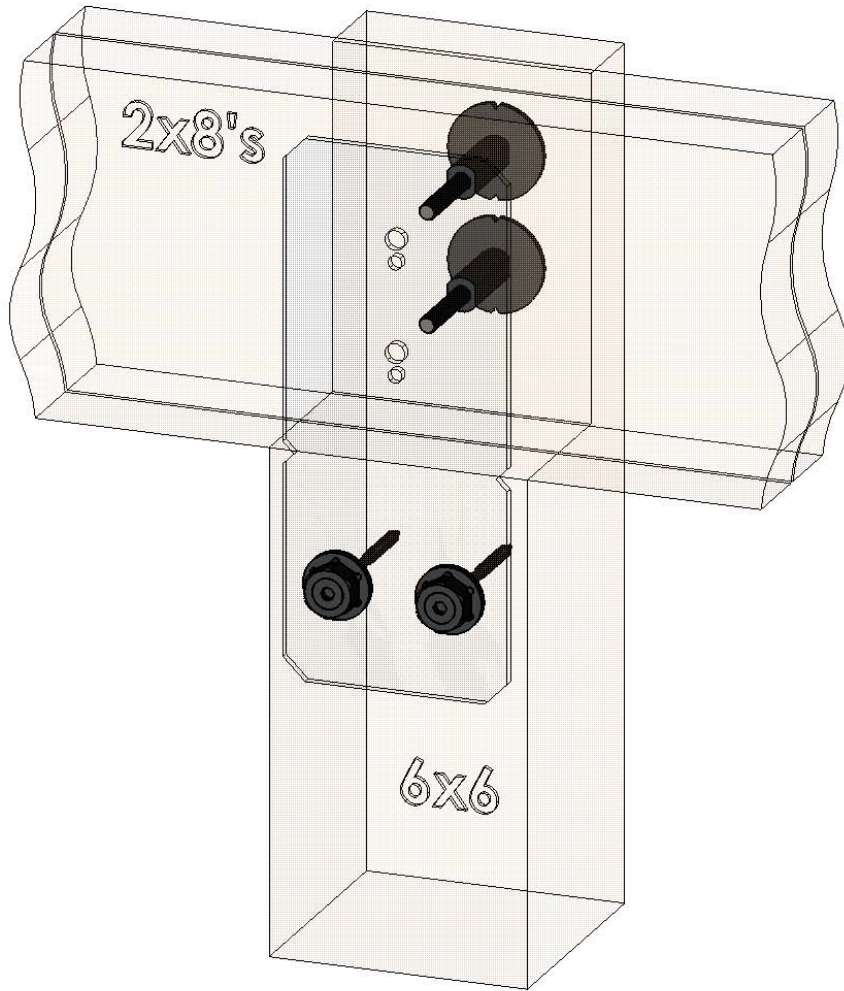
Weight: LBS  
Scale: 1:4  
Last updated: 10/10/2016

51776

# Product & Packaging Specs

## 8" Post to Beam Flush (P2B-IW-8F)

Item #: Typical Installation with Timber Bolts & 56680



Weight: LBS  
Scale: 1:4  
Last updated: 10/10/2016

51776

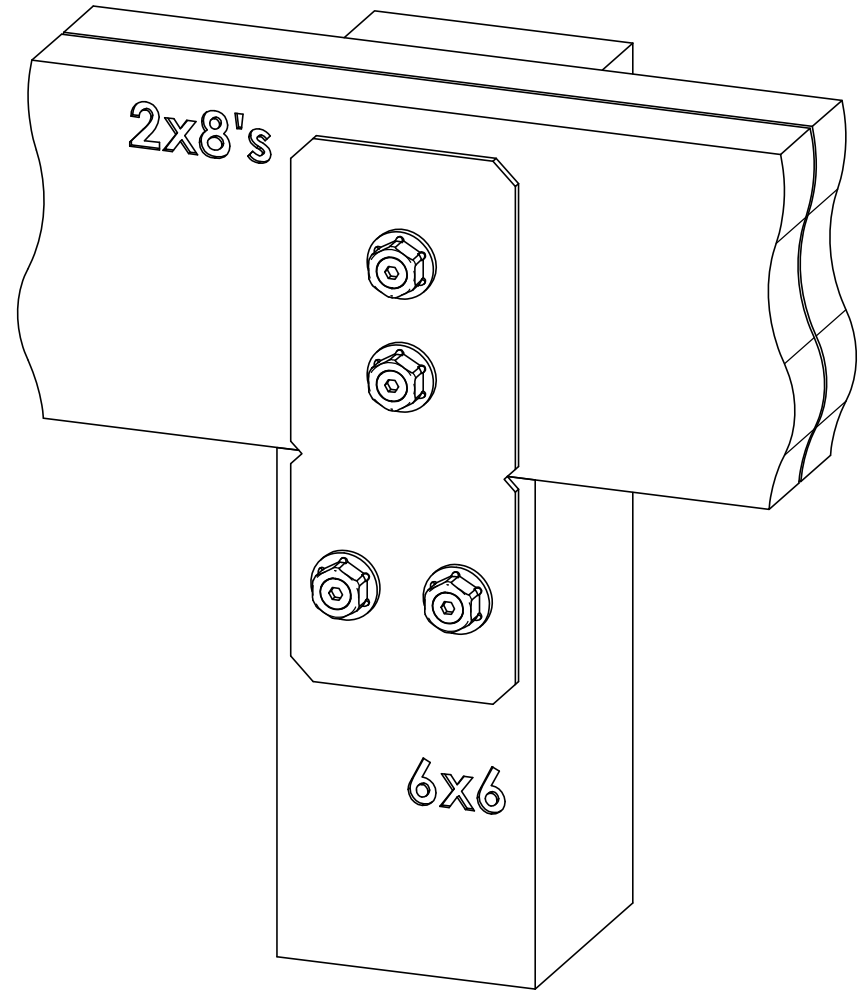
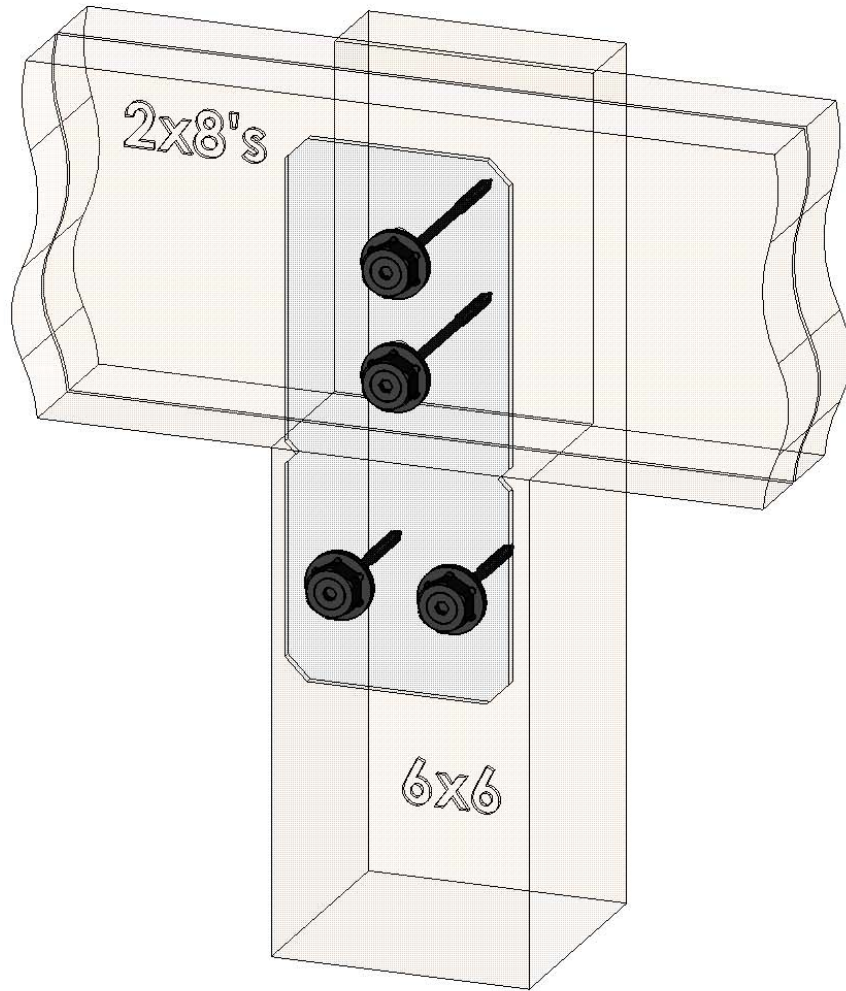


OZCO BUILDING PRODUCTS

# Product & Packaging Specs

## 8" Post to Beam Flush (P2B-IW-8F)

Item #: Typical Installation with Timber Screws



Weight: LBS  
Scale: 1:4  
Last updated: 10/10/2016

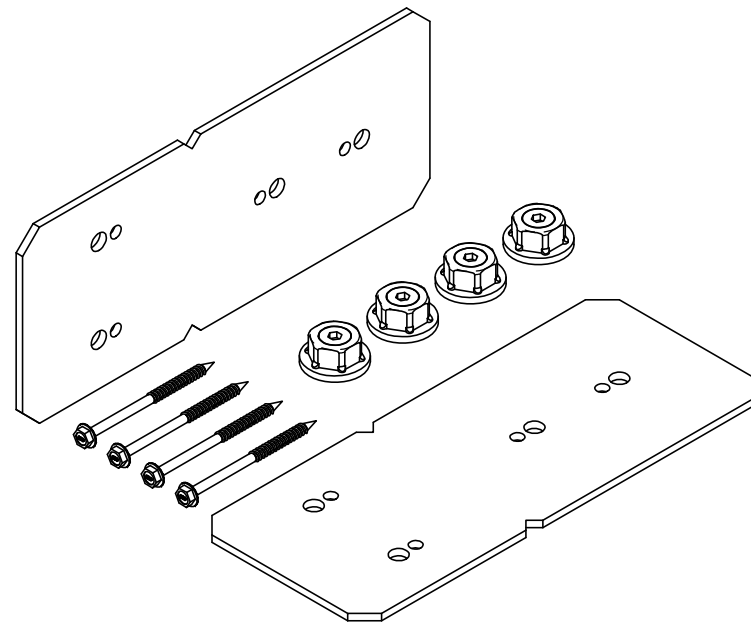
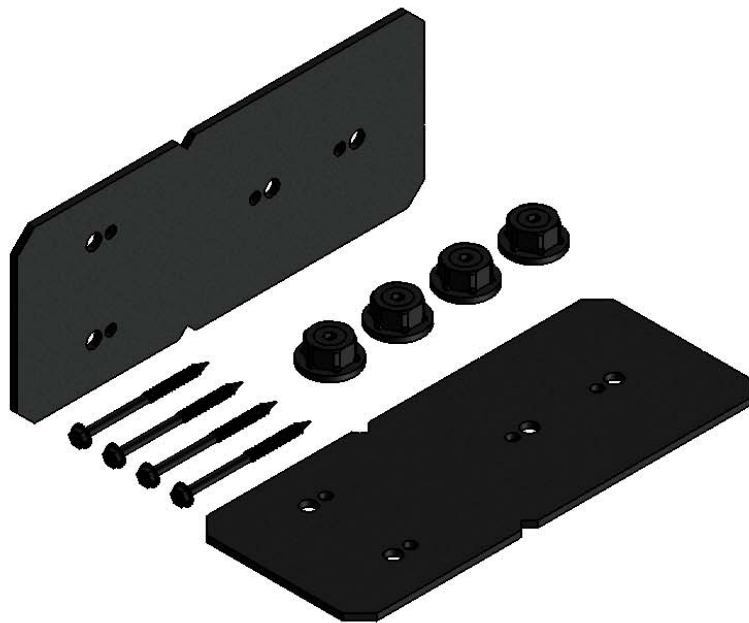
51776



# Product & Packaging Specs

## 8" Post to Beam Flush (P2B-IW-8F)

Item #: 51776



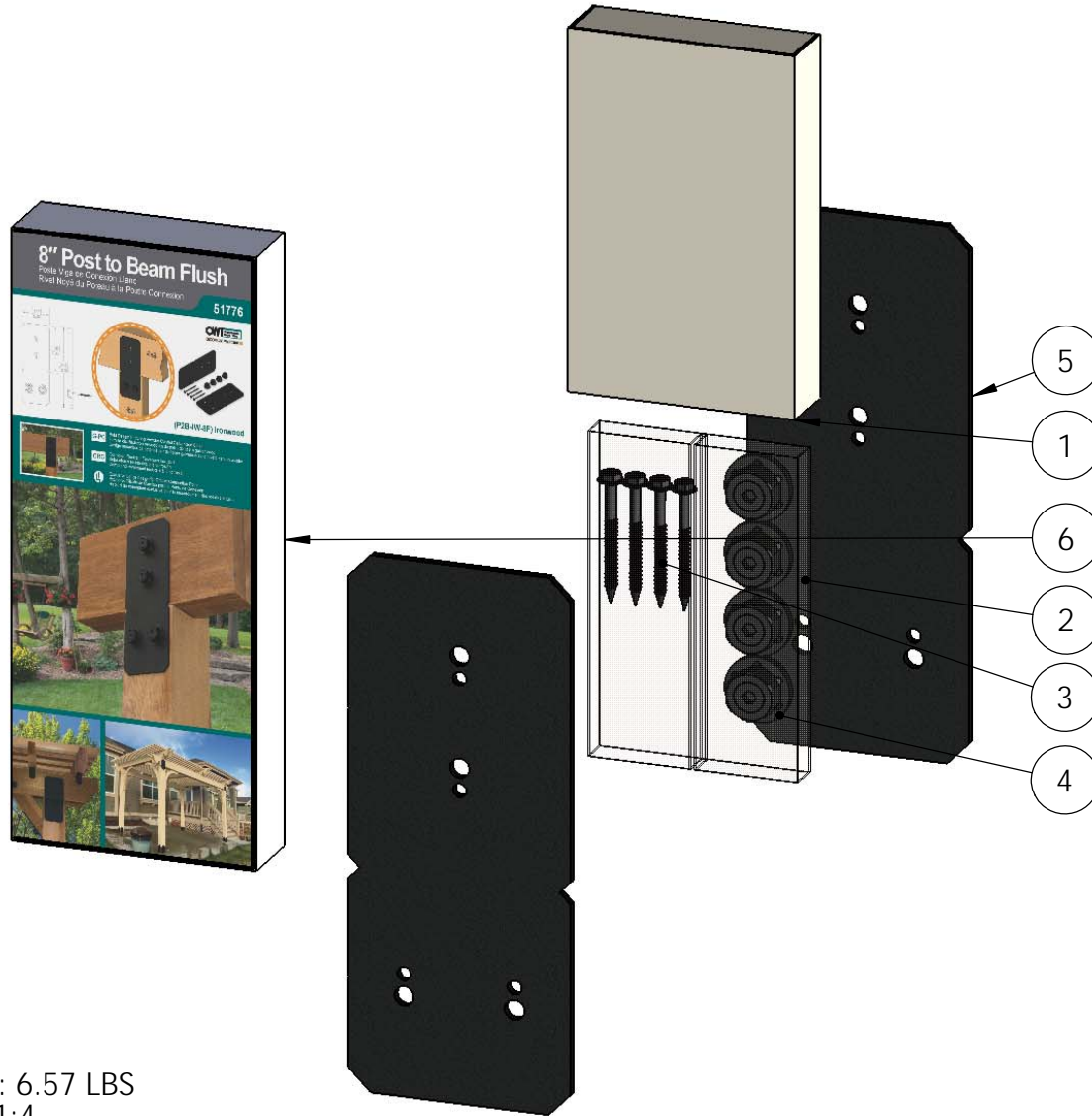
Weight: 6.48 LBS  
Scale: 1:4  
Last updated: 10/10/2016

51776

# Product & Packaging Specs

## 51776 Packing

Item #: Box packing



ITEM NO.	QTY.	PART NUMBER	DESCRIPTION
1	1	56637 Inner Box	56637 Inner Box
2	1	56637 Inner Box Sleeve	56637 Inner Box Sleeve
3	0.16	56626	OWT Timber Screw 2-3/4"
4	0.4	56621	1 1/2" Hex Cap Nut (HCN)
5	2	51776-11	Bracket, 8" Flush Post to Beam
6	1	Box, 51776	Box, 51776

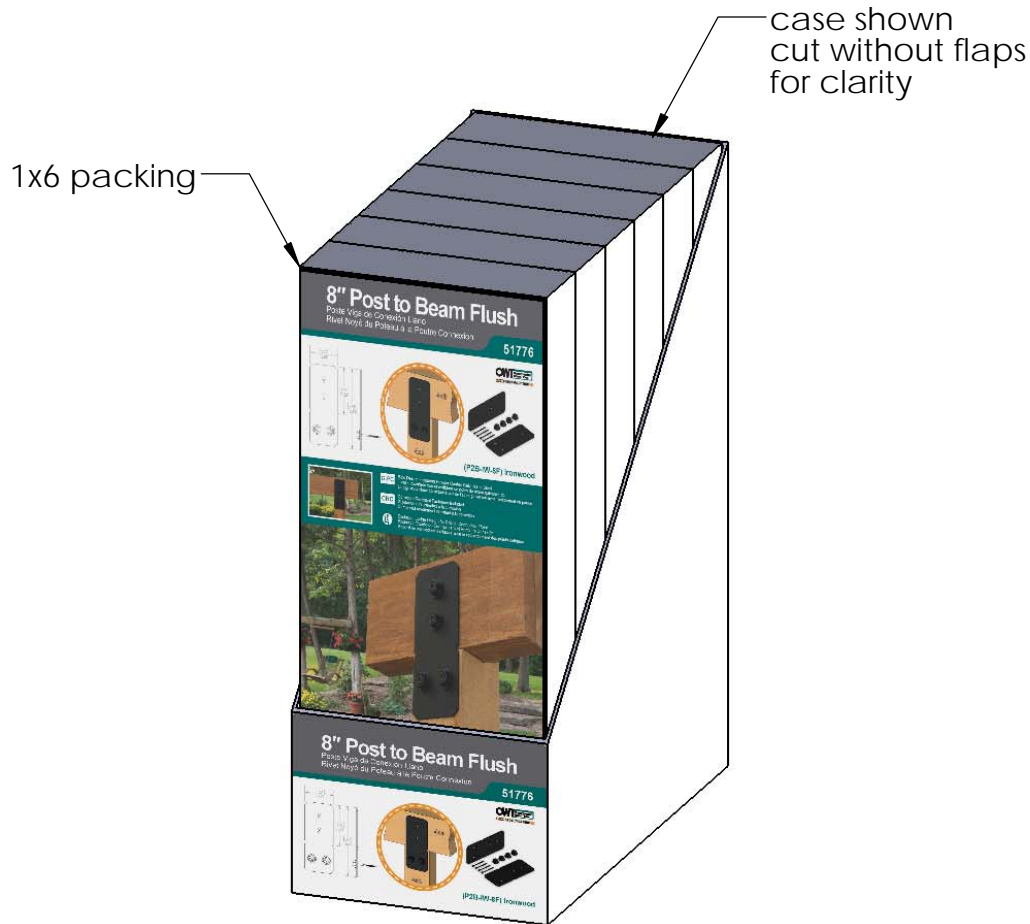
Weight: 6.57 LBS  
 Scale: 1:4  
 Last updated: 10/10/2016

51776



# Product & Packaging Specs

51776 Packing  
Item #: Case packing



Weight: 37 LBS  
Scale: 1:4  
Last updated: 10/10/2016

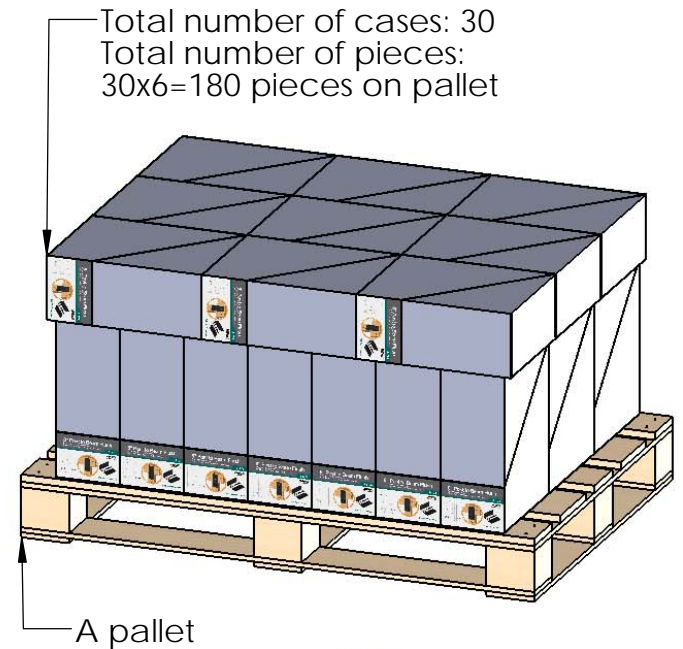
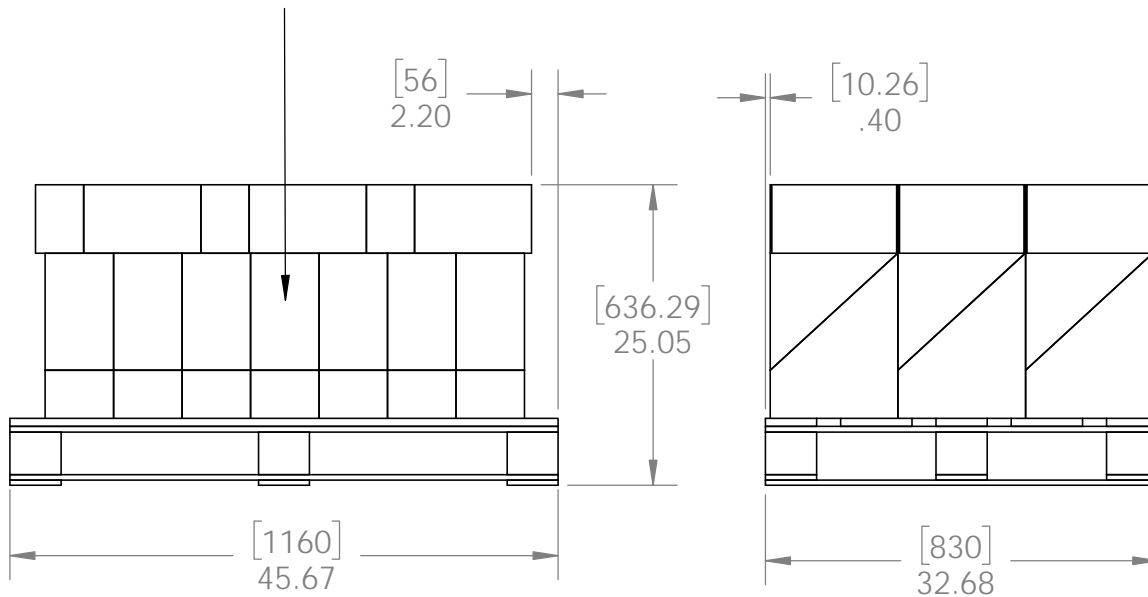
51776

# Product & Packaging Specs

51776 Packing

Item #: Pallet packing

ADD PALLET LABEL



Weight: 545 LBS  
 Scale: 1:16  
 Last updated: 10/10/2016

additional pallet packing instructions  
 plywood on top layer  
 strap to pallet  
 clear wrap around boxes