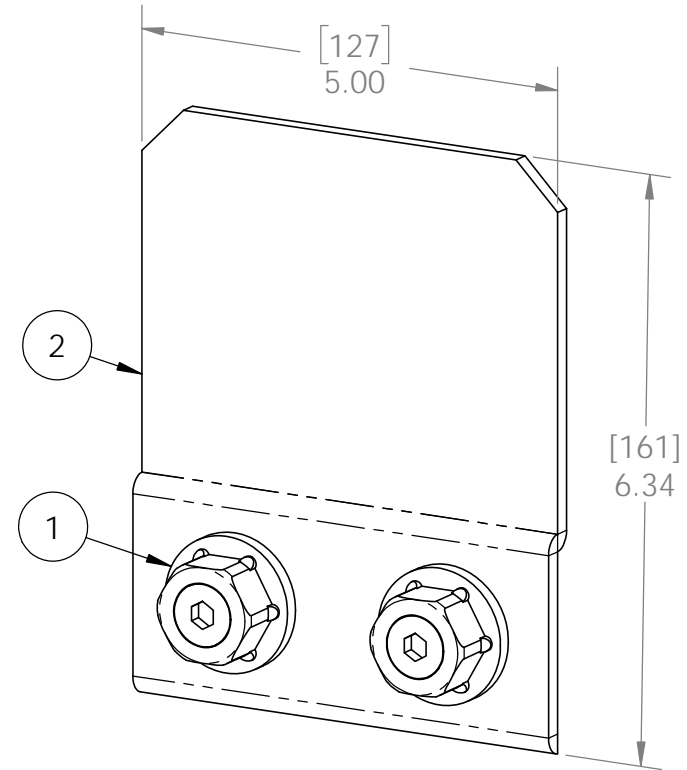
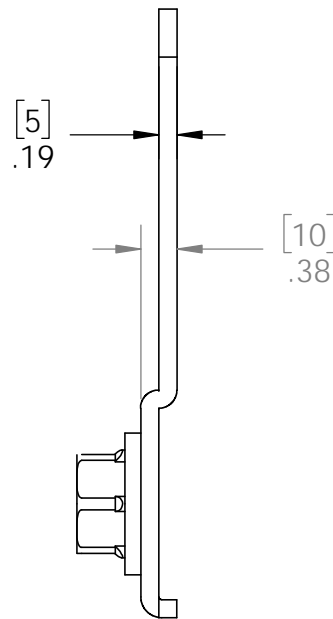
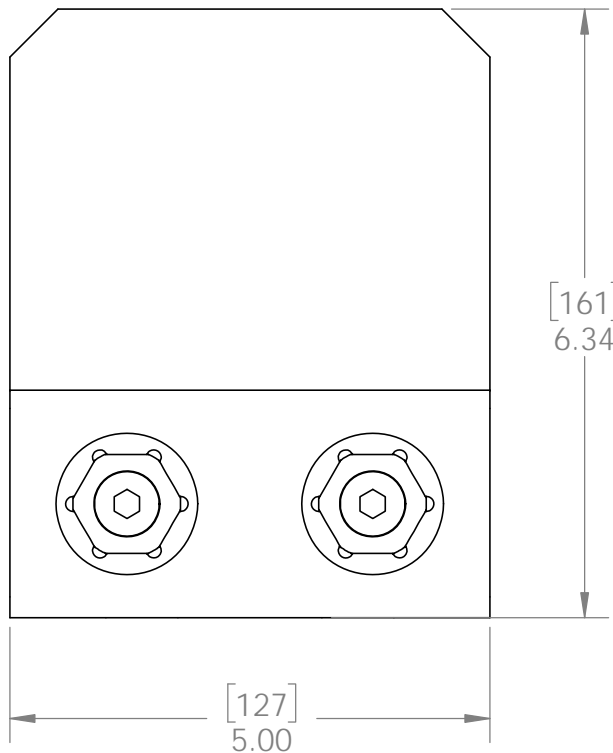


Product & Packaging Specs

Truss Accent (TA-IW)

Item #: 51711

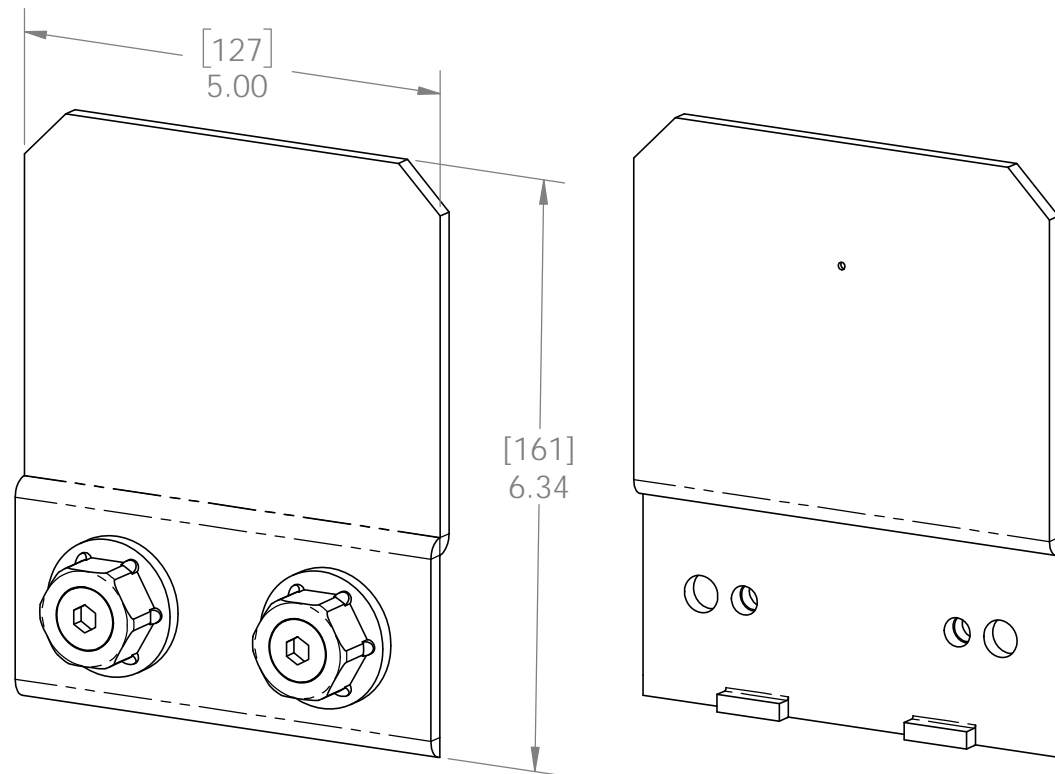
ITEM NO.	QTY.	PART NUMBER	DESCRIPTION
1	0.2	56621	1 1/2" Hex Cap Nut (HCN)
2	1	51711-10	Truss Accent



each kit contains 2 assemblies

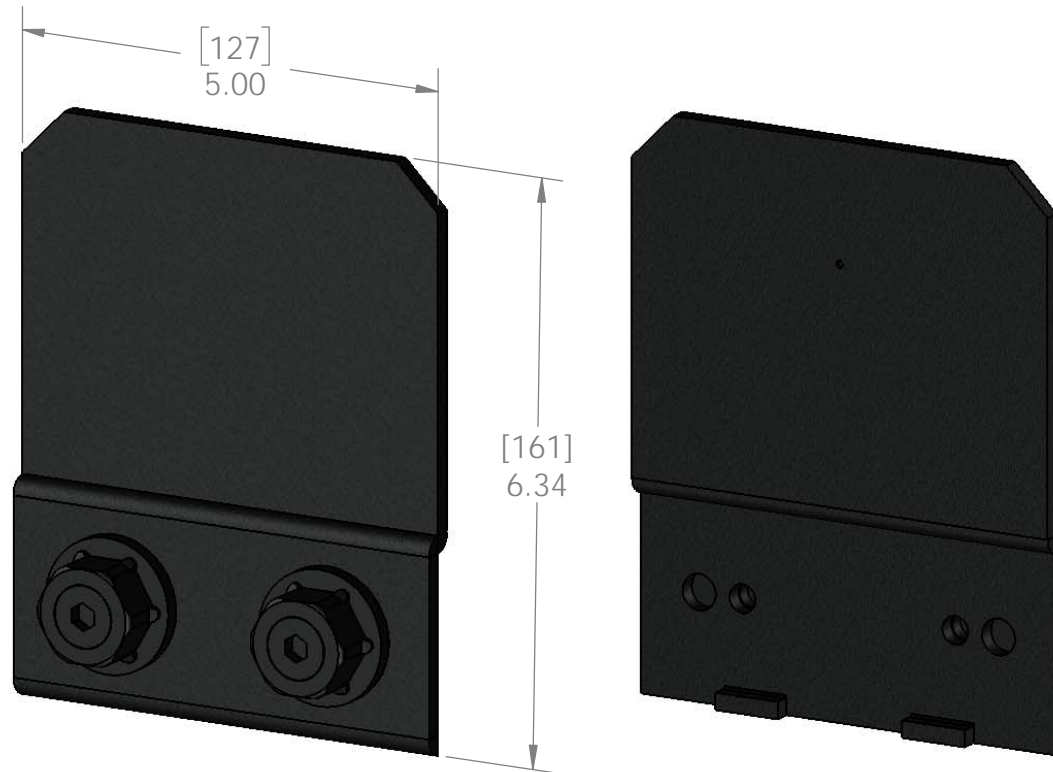
Weight: 1.81 LBS
 Scale: 1:2
 Last updated: 10/10/2016

51711



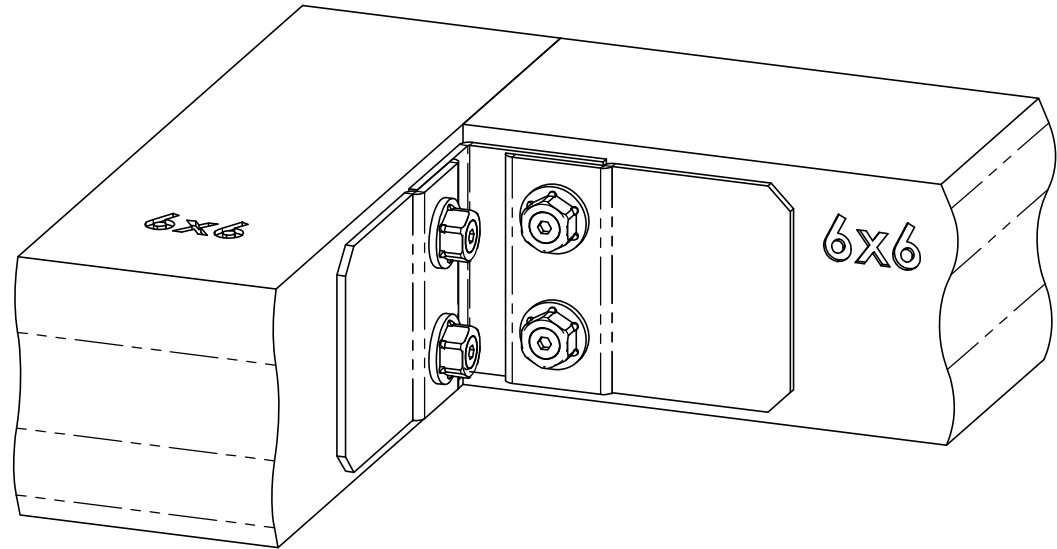
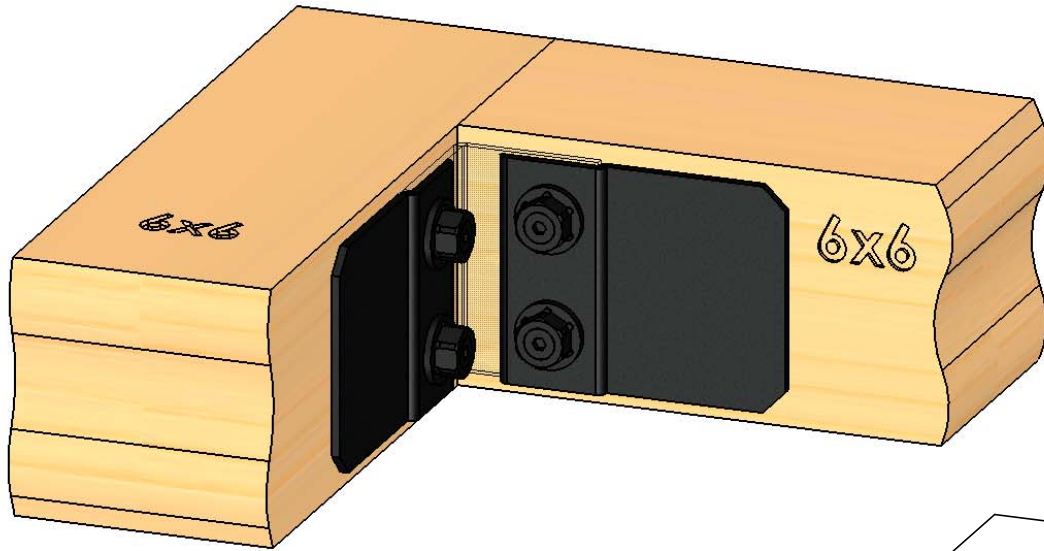
Weight: 1.81 LBS
Scale: 1:2
Last updated: 10/10/2016

51711



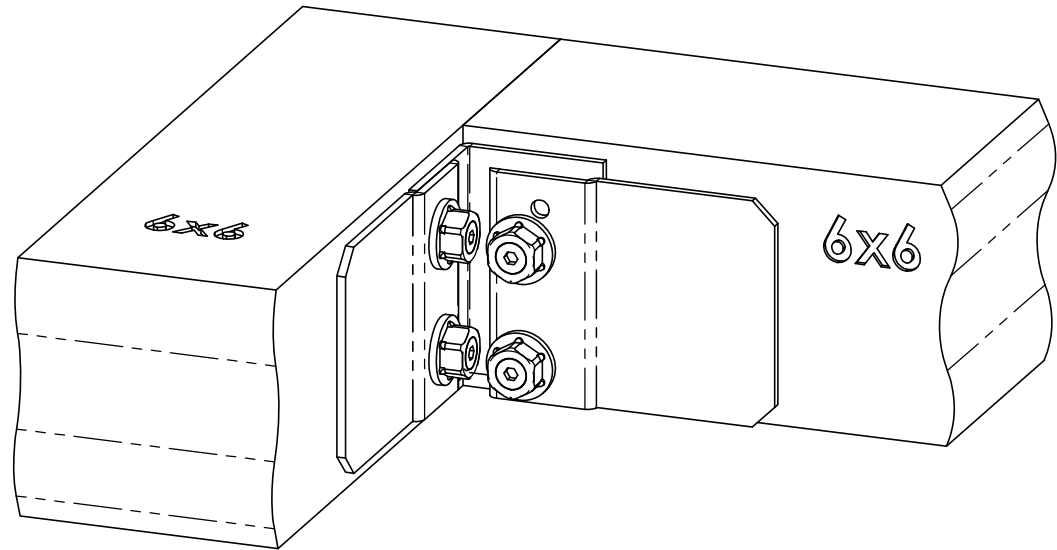
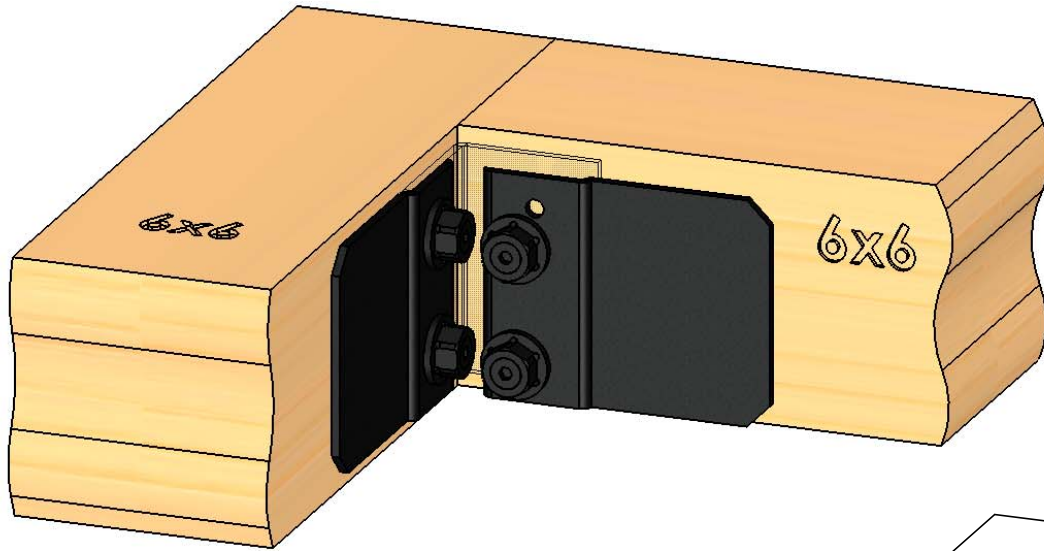
Weight: 1.81 LBS
Scale: 1:2
Last updated: 10/10/2016

51711



Weight: 1.81 LBS
Scale: 1:4
Last updated: 10/10/2016

51711



Weight: 1.81 LBS
Scale: 1:4
Last updated: 10/10/2016

51711

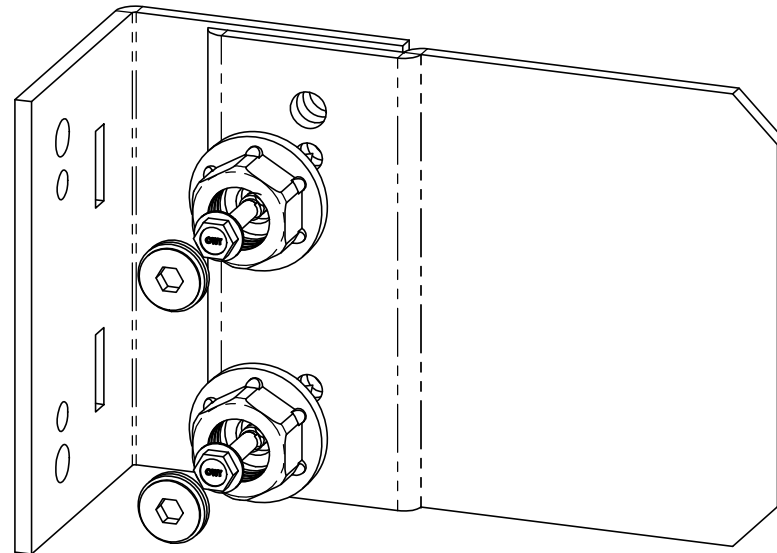
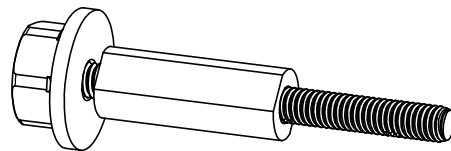
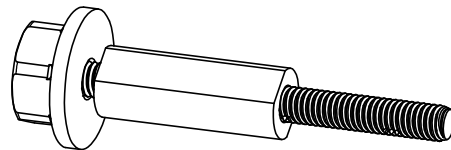
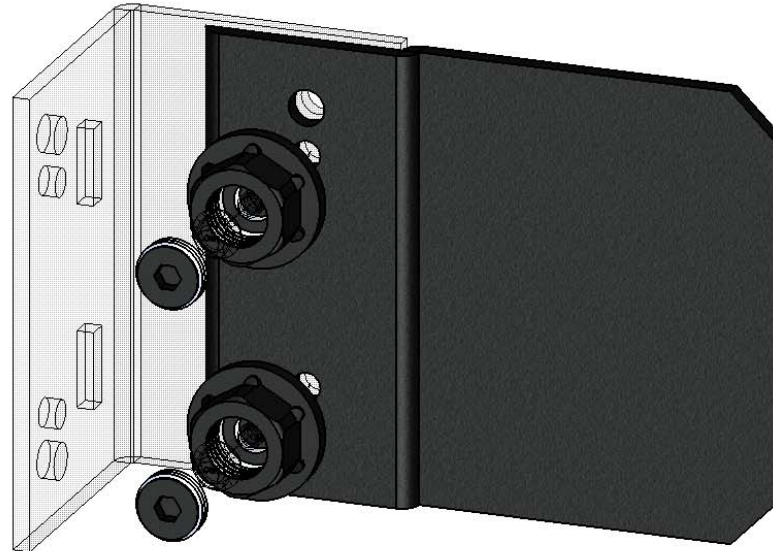
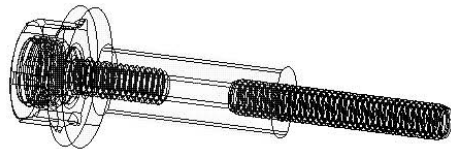
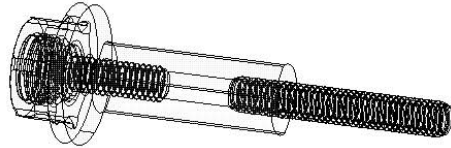


OZCO BUILDING PRODUCTS

Product & Packaging Specs

Truss Accent (TA-IW)

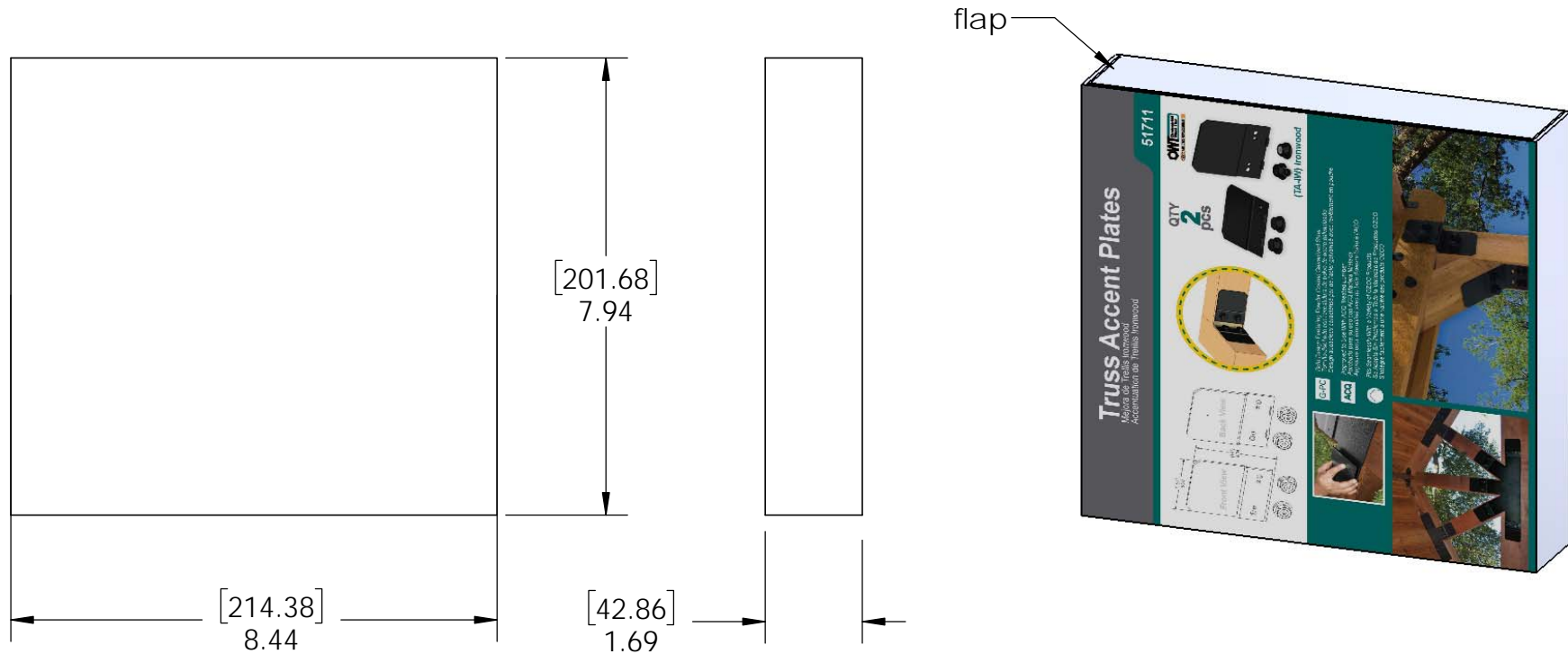
Item #: 51711



Weight: 1.81 LBS
Scale: 1:2
Last updated: 10/10/2016

51711

V2.00 - Installation Instructions, Specifications and Project Plans are effective 10/10/2016. This information is updated periodically and should not be relied upon after 2 years from 10/10/2016. Please visit OZCOBP.com to get current information. 7



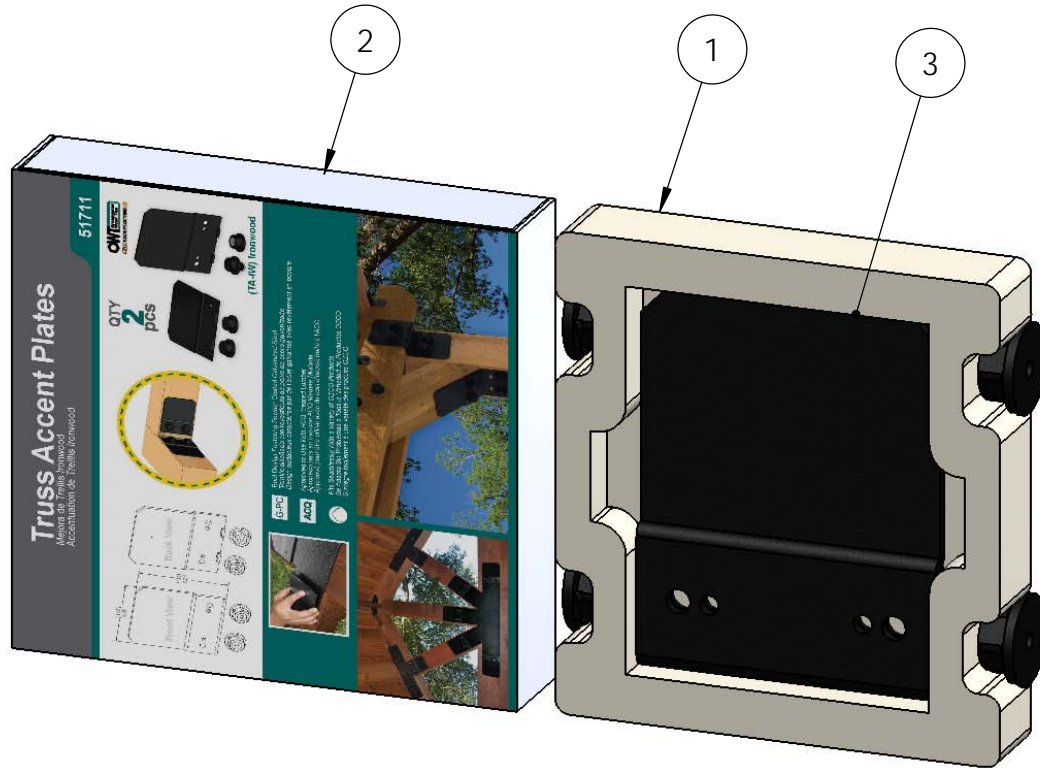
Material: Corrugated Paper
 Finish: See Artwork
 Weight: 0.08 LBS
 Scale: 1:3
 Last updated: 10/10/2016

51711

Product & Packaging Specs

51711 Packing

Item #: Box packing



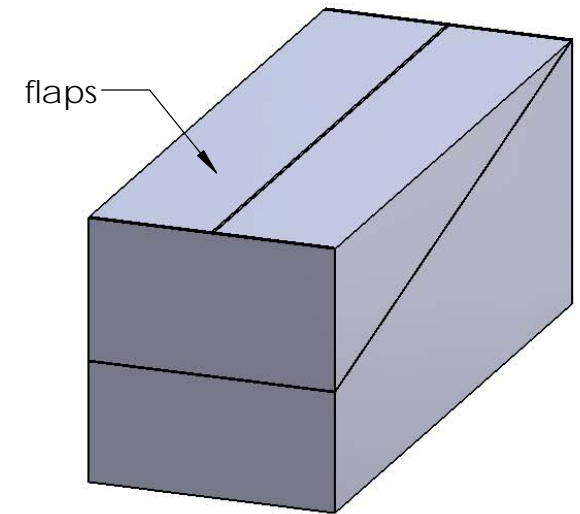
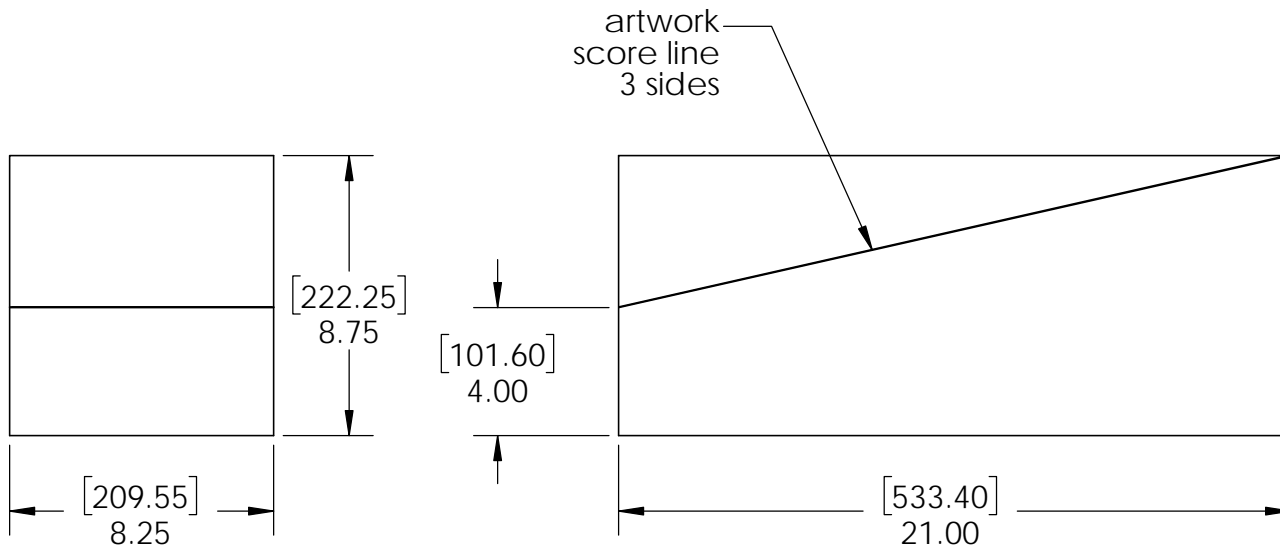
ITEM NO.	QTY.	PART NUMBER	DESCRIPTION
1	1	56611 Truss Accent Box Insert	Insert, Truss Accent Box
2	1	Box, 51711	Box, 51711
3	1	51711	Truss Accent (TA-IW)

items not shown:

- installation instructions
- parts wrapped in packing foam sheet

Weight: 3.92 LBS
 Scale: 1:3
 Last updated: 10/10/2016

51711



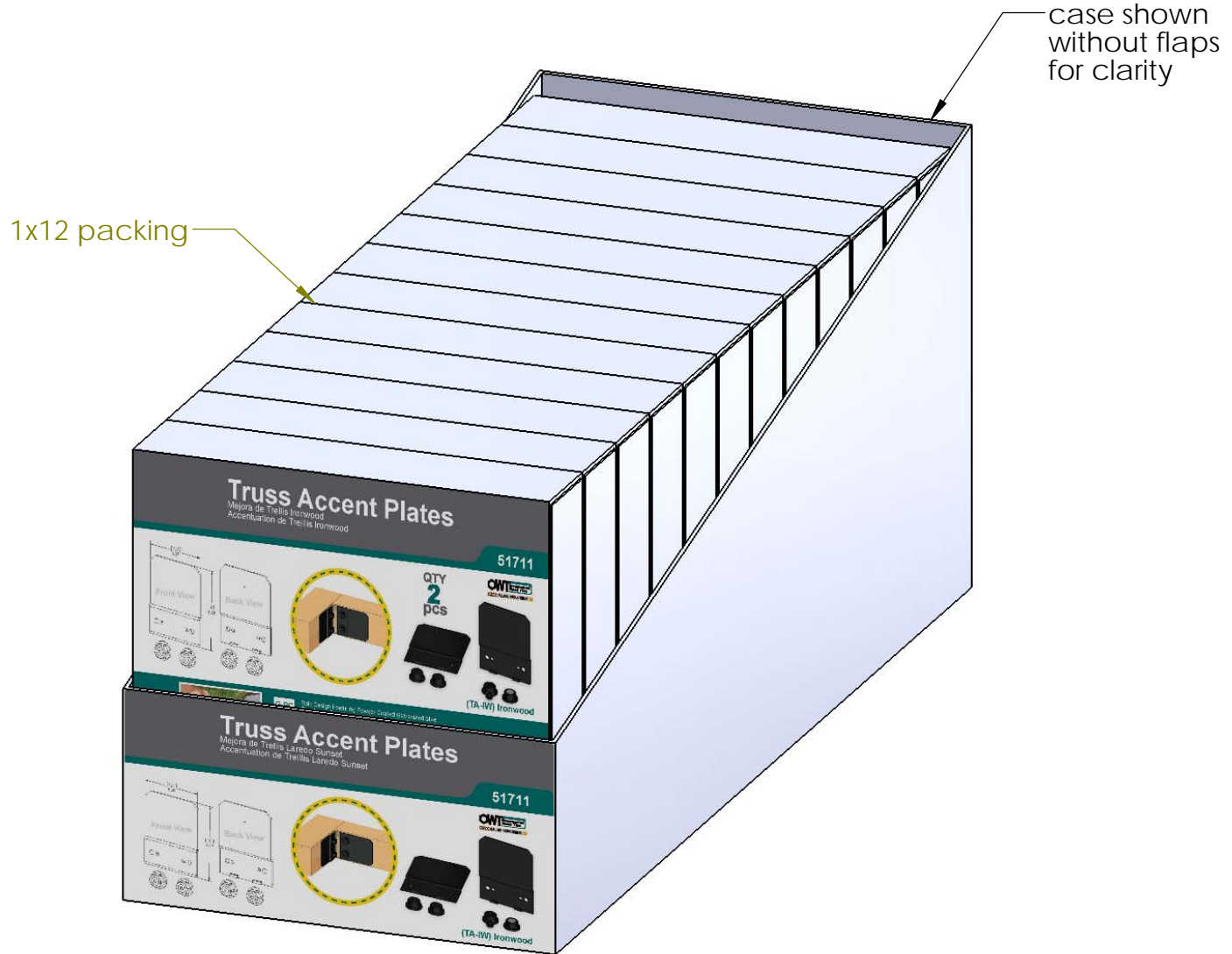
Material: Corrugated Paper
 Finish: See artwork
 Weight: 0.24 LBS
 Scale: 1:6
 Last updated: 10/10/2016

51711

Product & Packaging Specs

51711 Packing

Item #: Case packing



Weight: 1.20 LBS
 Scale: 1:3
 Last updated: 10/10/2016

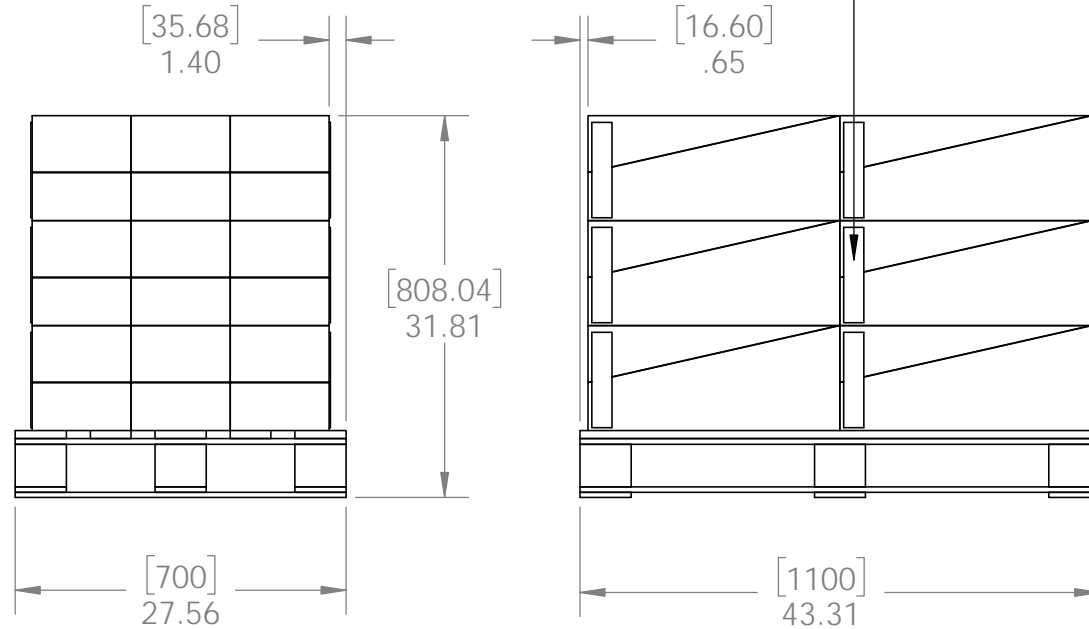
51711

Product & Packaging Specs

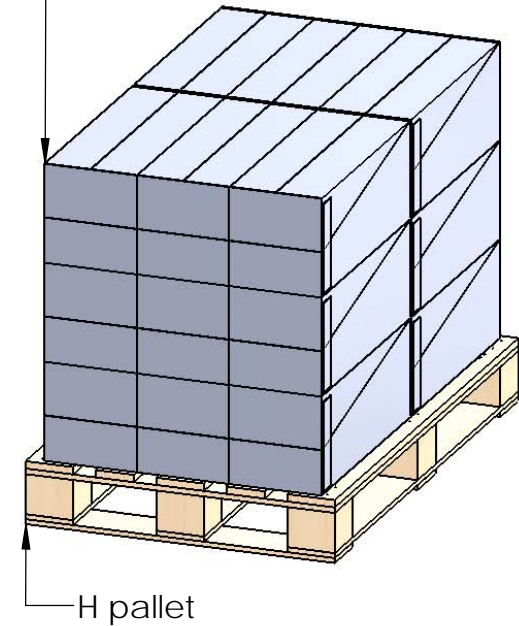
51711 Packing

Item #: Pallet packing

ADD PALLET LABEL



Total number of cases: 18
 Total number of pieces:
 18x12=216 pieces on pallet



additional pallet packing instructions

- plywood on top layer
- strap to pallet
- clear wrap around boxes

Weight: 799 LBS
 Scale: 1:16
 Last updated: 10/10/2016

51711