

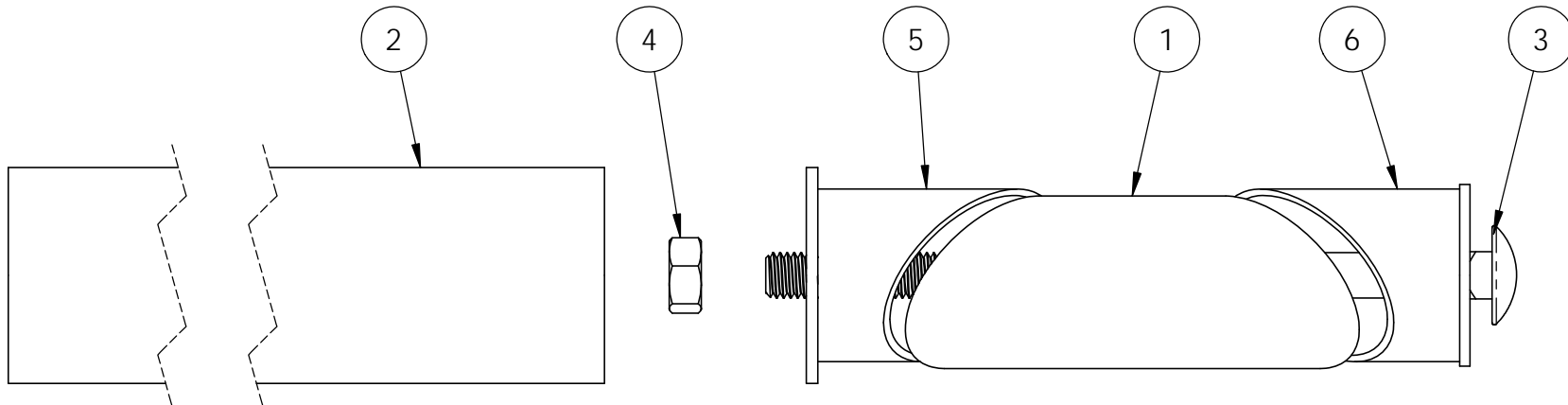


# Product & Packaging Specs

## OZ-Post Post Extender (OZ-PST-EXT)

Item #: 20550

| ITEM NO. | QTY. | PART NUMBER | DESCRIPTION                  |
|----------|------|-------------|------------------------------|
| 1        | 1    | 20550-12    | Sleeve, Post Extender Middle |
| 2        | 1    | 20550-16    | Pipe Extension Assembly      |
| 3        | 1    | Bolt        | Carriage Bolt, 1/2-13x8      |
| 4        | 1    | Nut         | Nut, Hex 1/2-13              |
| 5        | 1    | 20550-14    | Upper Assembly               |
| 6        | 1    | 20550-15    | Lower Assembly               |



Weight: 11.10 LBS  
 Scale: 1:2  
 Last updated: 3/8/2017

20550

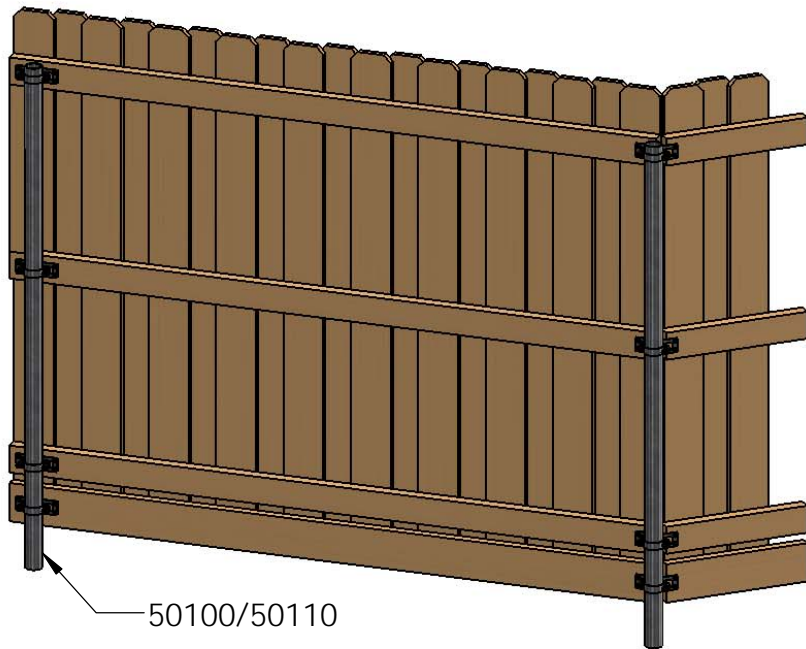


OZCO BUILDING PRODUCTS

# Product & Packaging Specs

## OZ-Post Post Extender (OZ-PST-EXT)

Item #: Typical Installation



50100/50110

OZCO Project #262



50100/50110

OZCO Project #262  
extended to 8' utilizing 20550

Weight: 784.23 LBS  
Scale: 1:26  
Last updated: 3/8/2017

20550

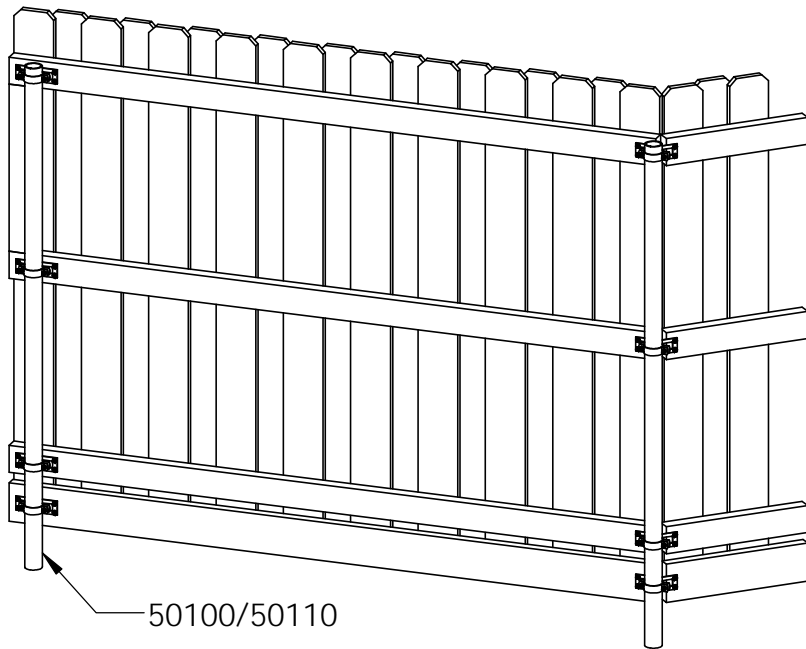


OZCO BUILDING PRODUCTS

# Product & Packaging Specs

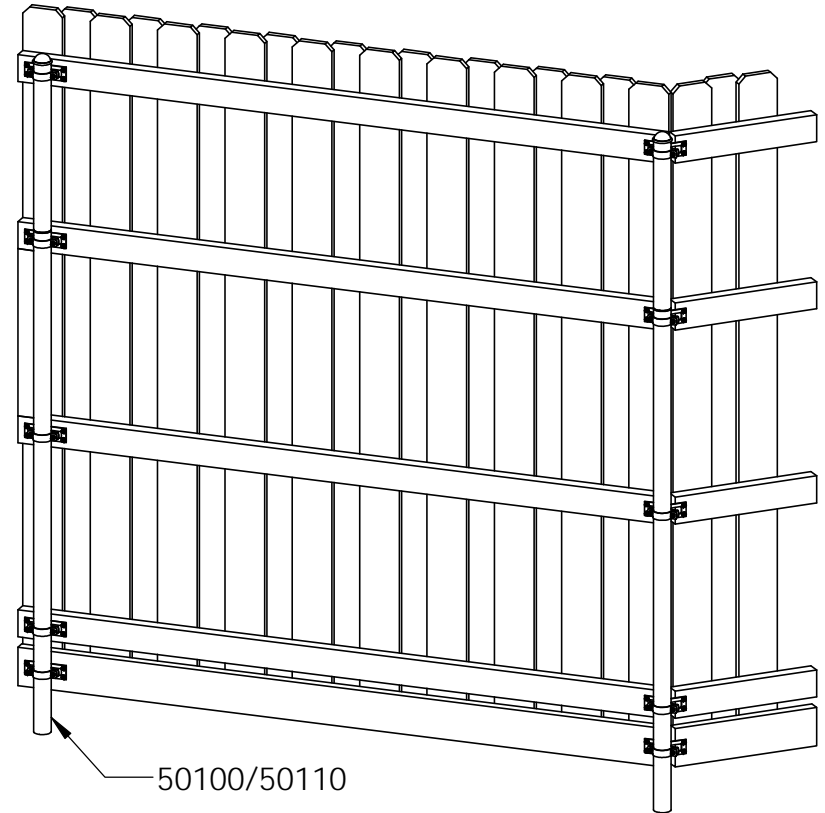
## OZ-Post Post Extender (OZ-PST-EXT)

Item #: Typical Installation



50100/50110

OZCO Project #262



50100/50110

OZCO Project #262  
extended to 8' utilizing 20550

Weight: 784.23 LBS  
Scale: 1:26  
Last updated: 3/8/2017

20550



**OZCO** BUILDING PRODUCTS

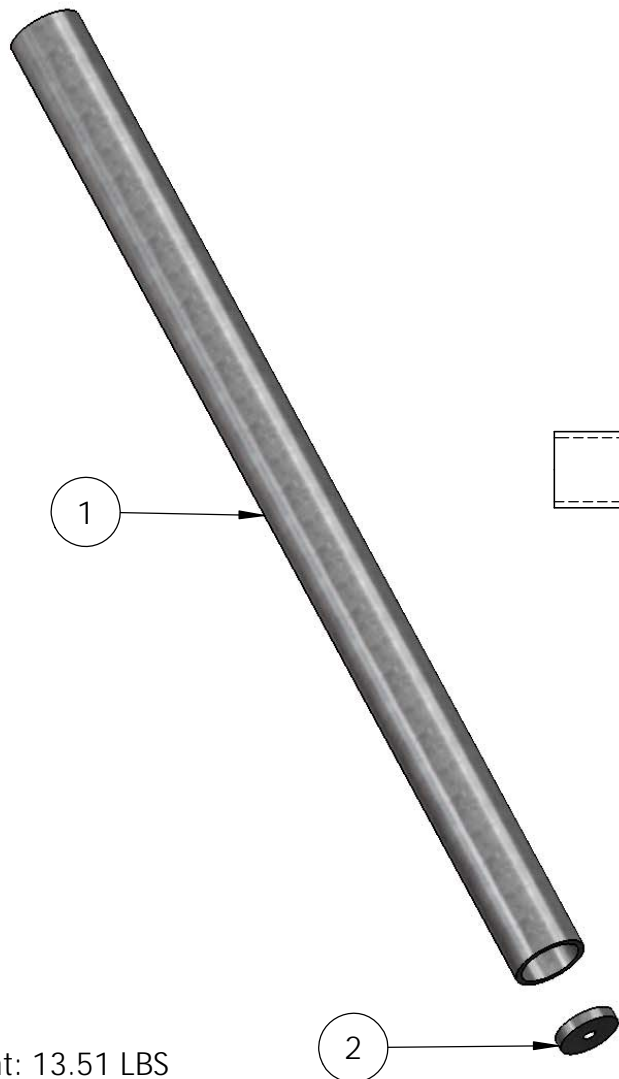
# Product & Packaging Specs

## Pipe Extension Assembly

Item #: 20550-16

| ITEM NO. | QTY. | PART NUMBER | DESCRIPTION                          |
|----------|------|-------------|--------------------------------------|
| 1        | 1    | Pipe, 2.375 | Post, 2-3/8" Galvanized Steel, 36.00 |
| 2        | 1    | 20550-17    | Post Extender Weld Nut               |

weld items together



Weight: 13.51 LBS  
 Scale: 1:6  
 Last updated: 3/8/2017

20550

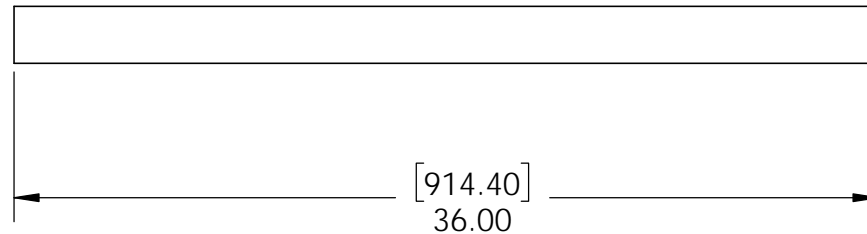
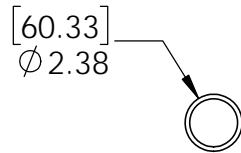


OZCO BUILDING PRODUCTS

# Product & Packaging Specs

Post, 2-3/8" Galvanized Steel, 24.00

Item #: Pipe, 2.375 Dia



Material: Galvanized Steel  
Finish: Hot Dip Galvanized  
Weight: 8.79 LBS  
Scale: 1:8  
Last updated: 3/8/2017

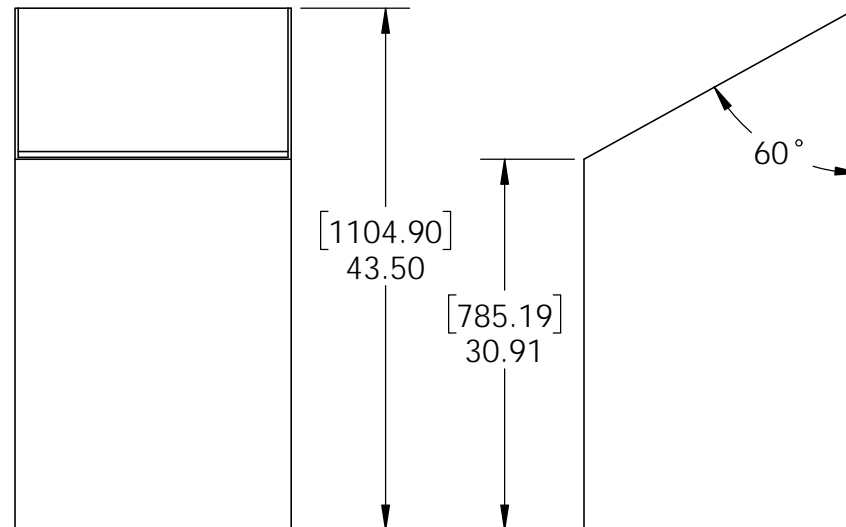
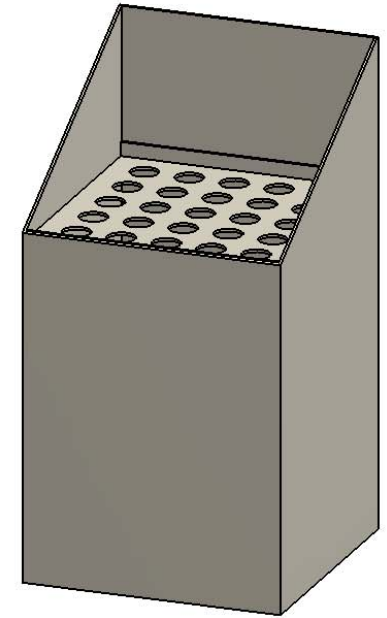
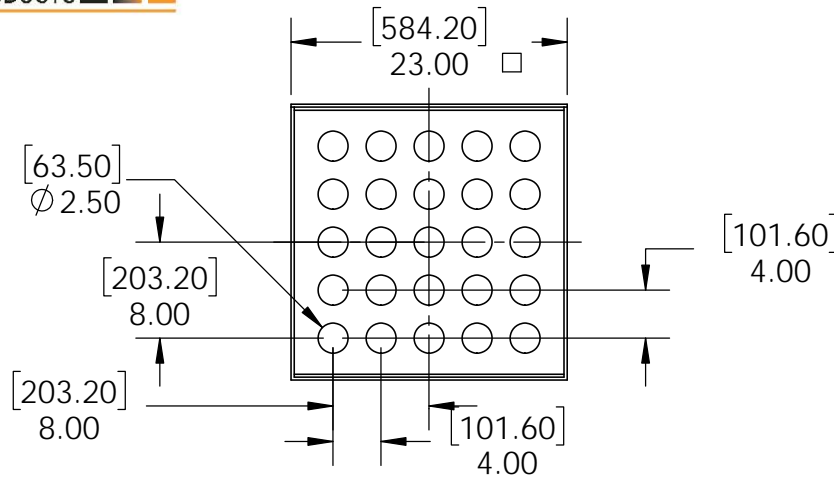
20550



# Product & Packaging Specs

Box, 20550 Display

Item #: Display



Material: Corrugated Paper  
 Finish: See artwork  
 Weight: 6.09 LBS  
 Scale: 1:16  
 Last updated: 3/8/2017

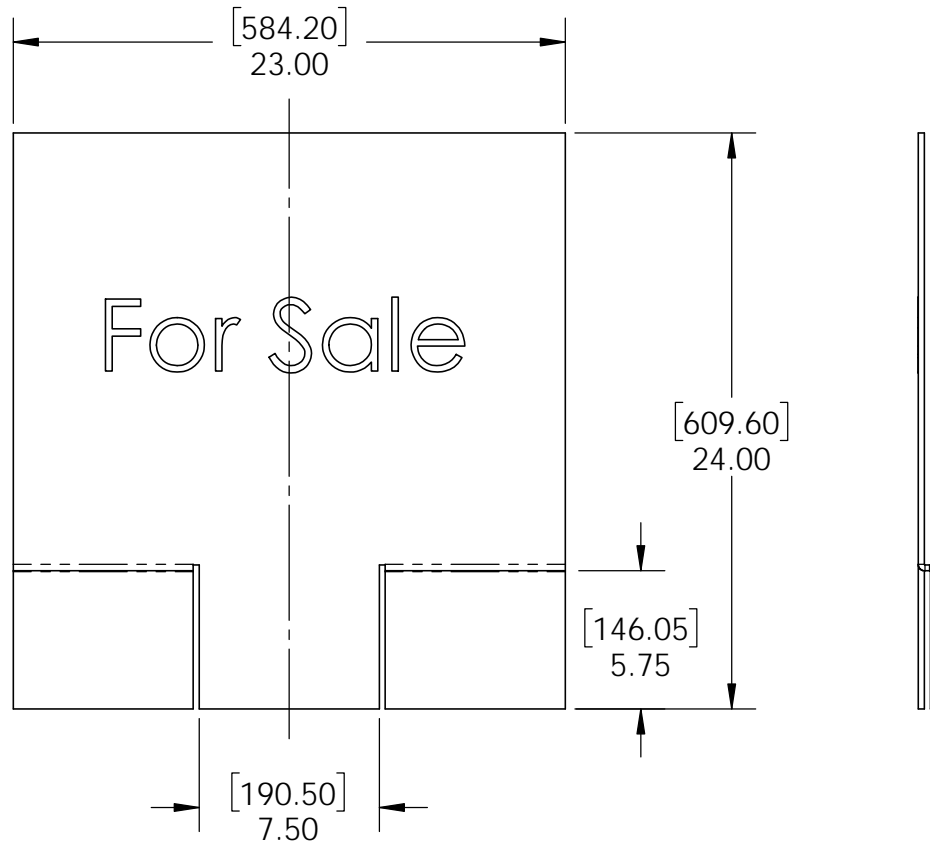
20550



# Product & Packaging Specs

## 20550 Display Signage

Item #: Signage



Material: Corrugated Paper  
Finish: See artwork  
Weight: 0.78 LBS  
Scale: 1:8  
Last updated: 3/8/2017

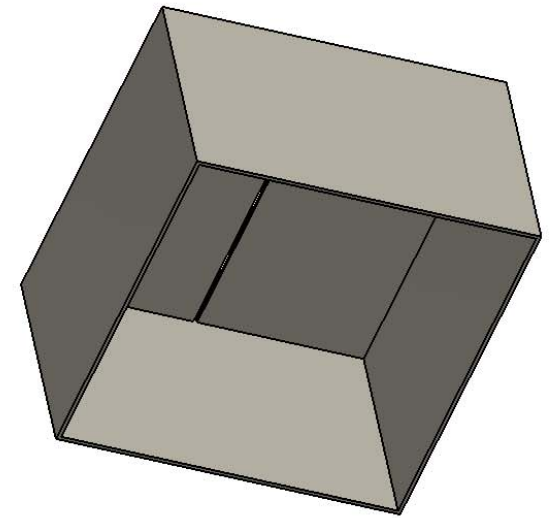
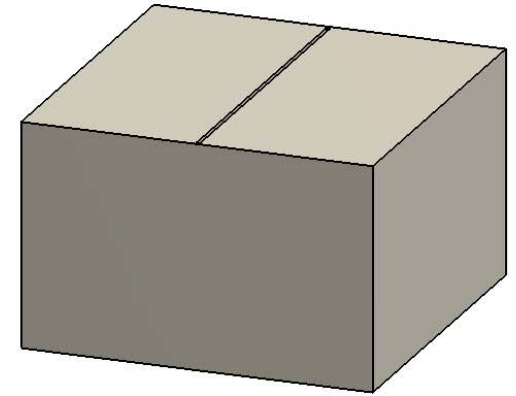
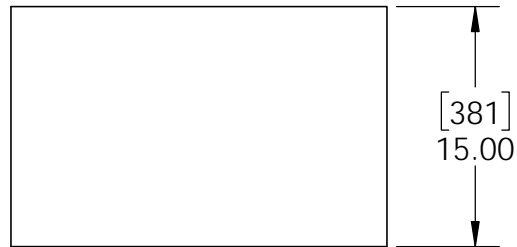
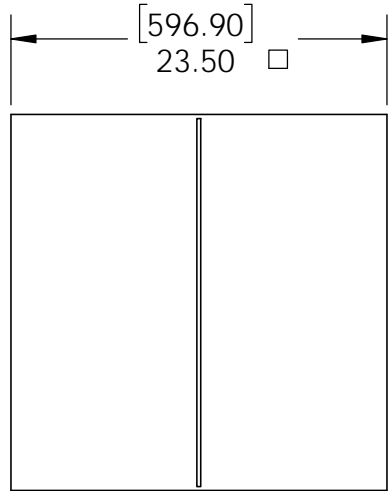
20550



# Product & Packaging Specs

Cover, 20550 Display Shipping Box

Item #: Box



Material: Corrugated Paper  
Finish: Natural  
Weight: 2.70 LBS  
Scale: 1:12  
Last updated: 3/8/2017

20550



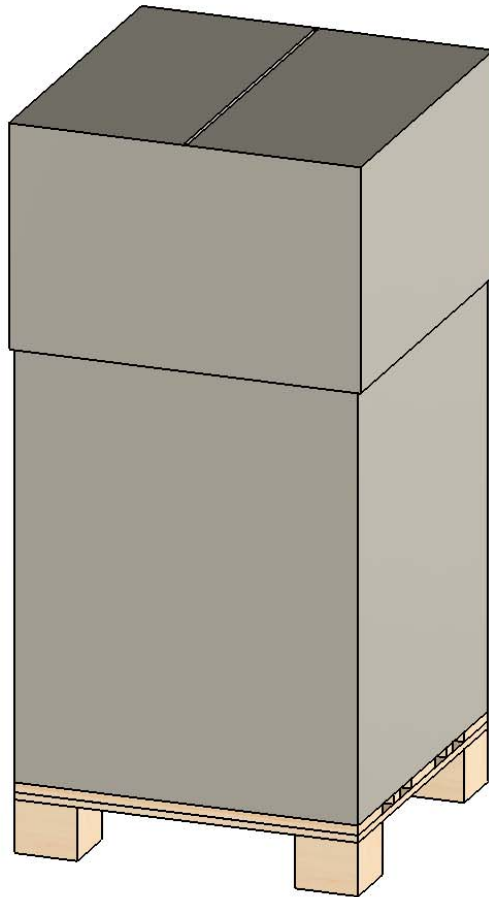


OZCO BUILDING PRODUCTS

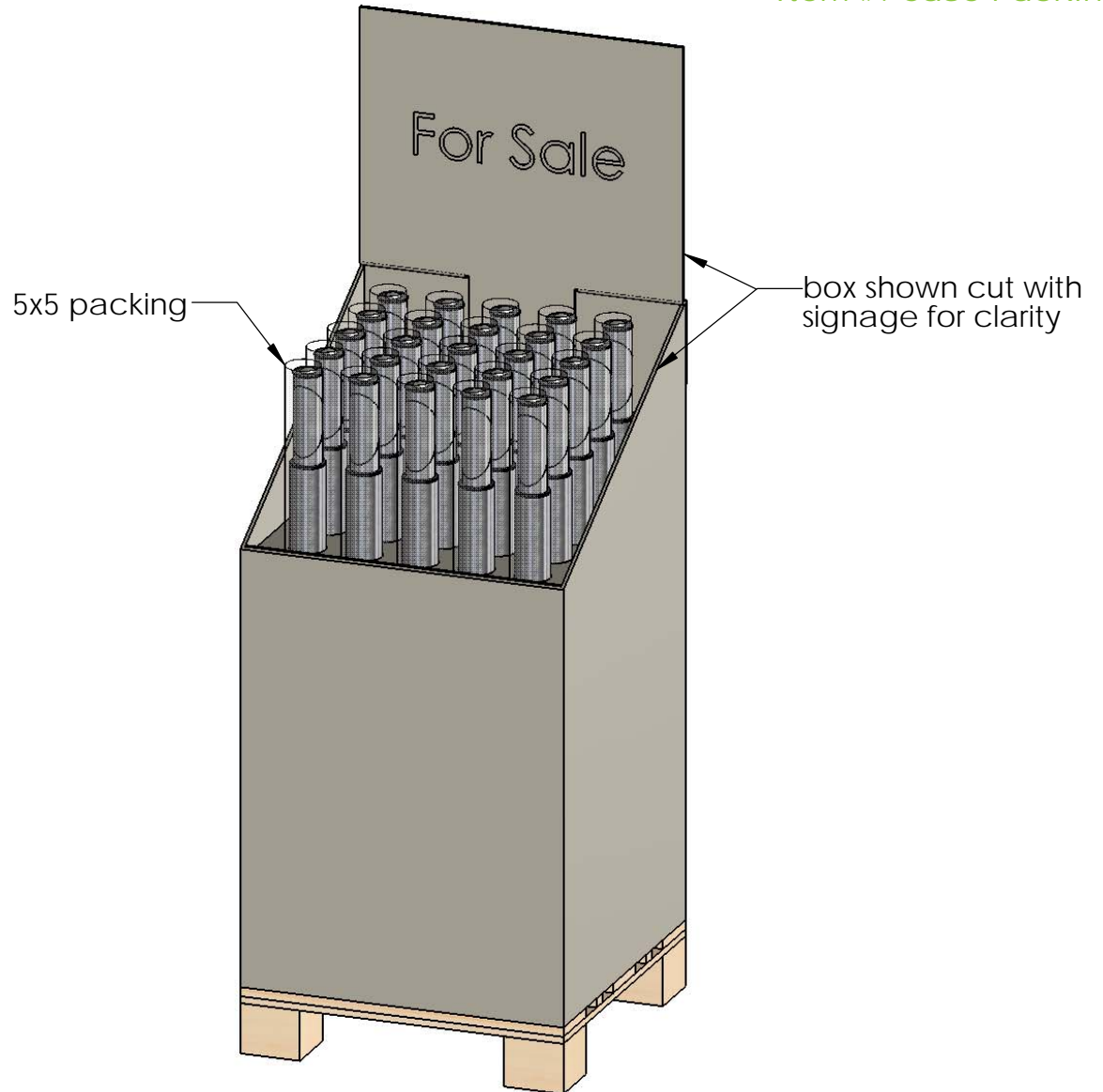
# Product & Packaging Specs

20550 Packing

Item #: Case Packing



as shipped



Weight: 397.97 LBS  
Scale: 1:12  
Last updated: 3/8/2017

20550

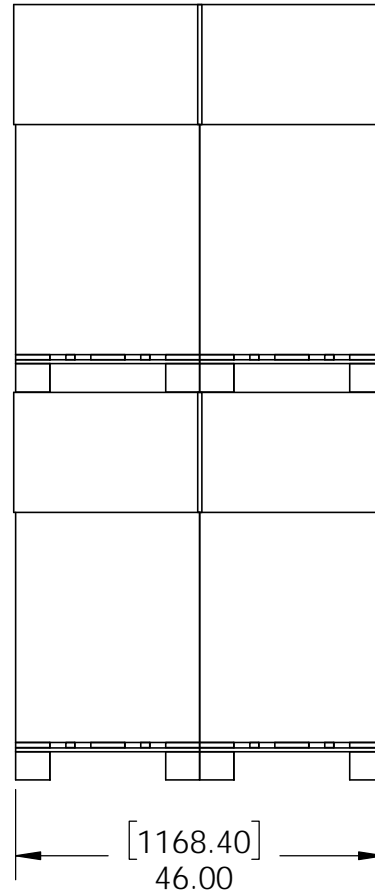
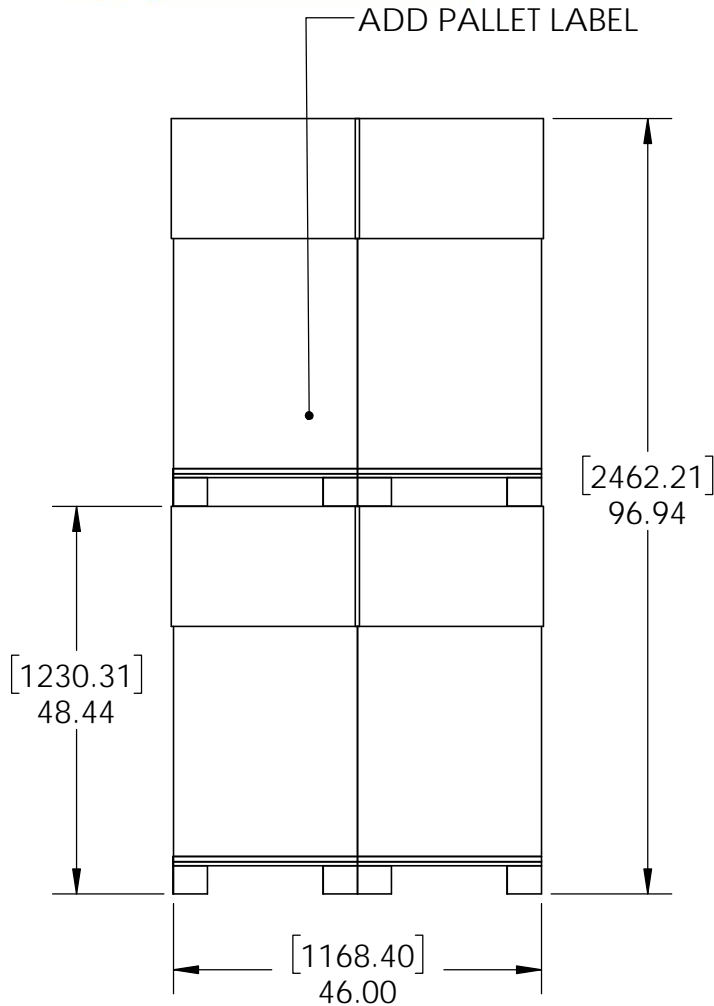


OZCO BUILDING PRODUCTS

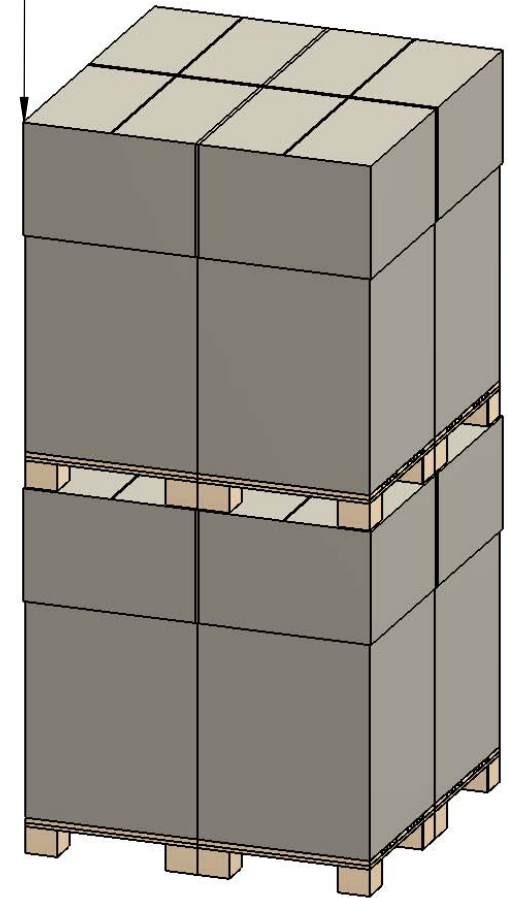
# Product & Packaging Specs

20550 Pallet packing

Item #: Pallet packing



Total number of cases: 8  
Total number of pieces:  
 $25 \times 8 = 200$  pieces on pallet



additional pallet packing instructions

- plywood on top layer
- strap to pallet
- clear wrap around boxes



Weight: 3200 LBS  
Scale: 1:24  
Last updated: 3/8/2017

20550